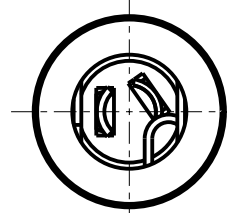
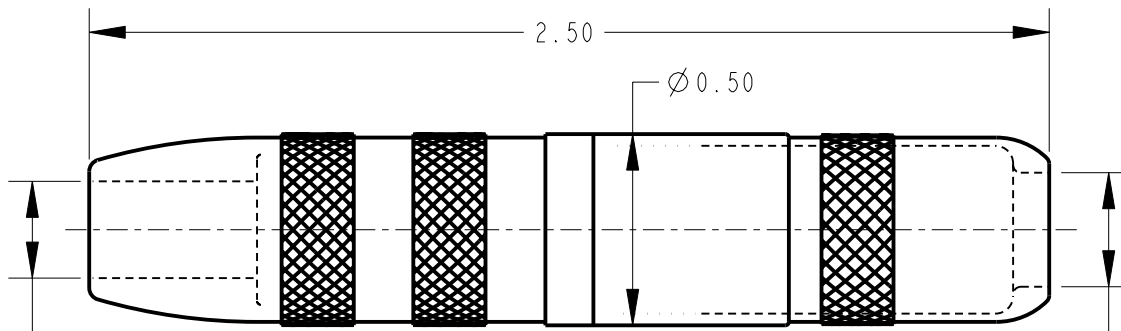
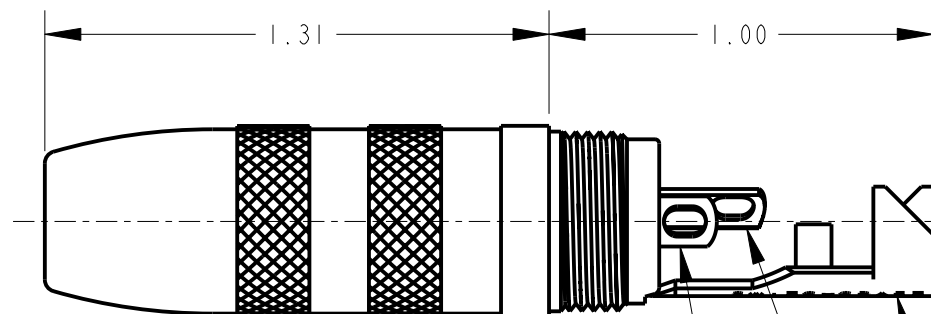


Ø 0.25



Ø 0.30



VIEW SHOWN  
WITH HANDLE REMOVED

SLEEVE TERMINAL  
CABLE CLAMP

"R" - RING TERMINAL

"T" - TIP TERMINAL

#### NOTES:

- MATERIALS  
HOUSING & HANDLE - COPPER ALLOY, NICKEL PLATED  
SPRINGS & GROUND CLIP - COPPER ALLOY  
CABLE CLAMP - STEEL, TIN PLATED  
INSULATOR - NYLON  
WASHER - PHENOLIC

- THIS PRODUCT IS RoHS COMPLIANT.

CUSTOMER DRAWING



STAR SYMBOL DENOTES CRITICAL DIMENSION

THIS DRAWING DESCRIBES A DESIGN CONSIDERED PROPRIETARY IN NATURE, DEVELOPED AND MANUFACTURED BY SWITCHCRAFT INC. AND IS RELEASED ON A CONFIDENTIAL BASIS FOR IDENTIFICATION PURPOSES ONLY.

UNLESS OTHERWISE SPECIFIED

- ALL DIMENSIONS IN INCHES  
- TWO PLACE DECIMALS  $\pm 0.01$   
- THREE PLACE DECIMALS  $\pm 0.005$   
- ANGLES  $\pm 1^\circ$   
- ALL DIA. CONCENTRIC WITHIN 0.005 T.I.R.

- FEATURES ON THE SAME CENTERLINE  
MUST BE ALIGNED WITHIN  $\pm 0.002$

- REMOVE ALL BURRS

SIZE	WIDTH	MULT	LBS/M	TEMPER
------	-------	------	-------	--------

FINISH	MATERIAL
SPEC No.	SPEC No.

FIRST USED ON	SCALE
	2:1

DATE DRAWN	BY	CHKD	APVD
13-May-09	TJK	TJK 5-13-09	TJK 5-13-09

**Switchcraft®**

F	21962	5-13-09	TJK	TJK
REV	ECO NUMBER	DATE	BY	APVD
REVISIONS				

DO NOT SCALE DRAWING

NAME	EXTENSION JACK	PART No.	REV
Ø 1/4" - 3 CONDUCTOR, RoHS		131	F

Pro/Engineer CAD File

A

# Mouser Electronics

Authorized Distributor

Click to View Pricing, Inventory, Delivery & Lifecycle Information:

[Switchcraft:](#)

[131](#)