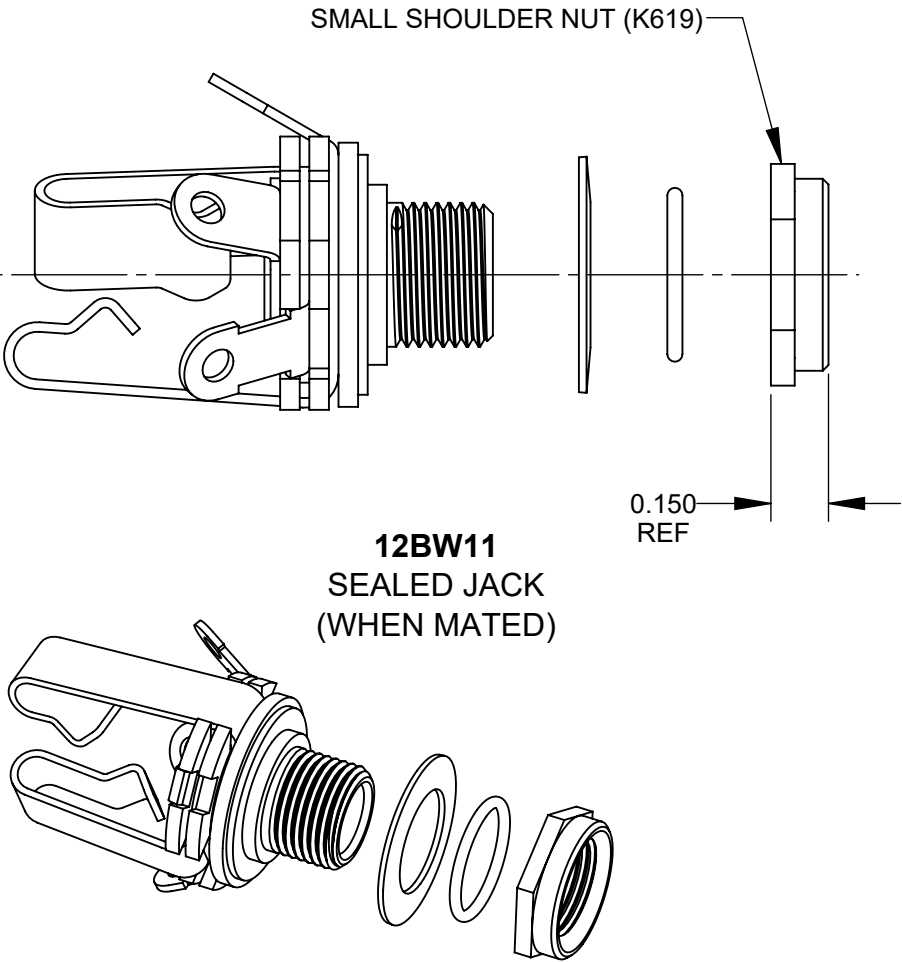
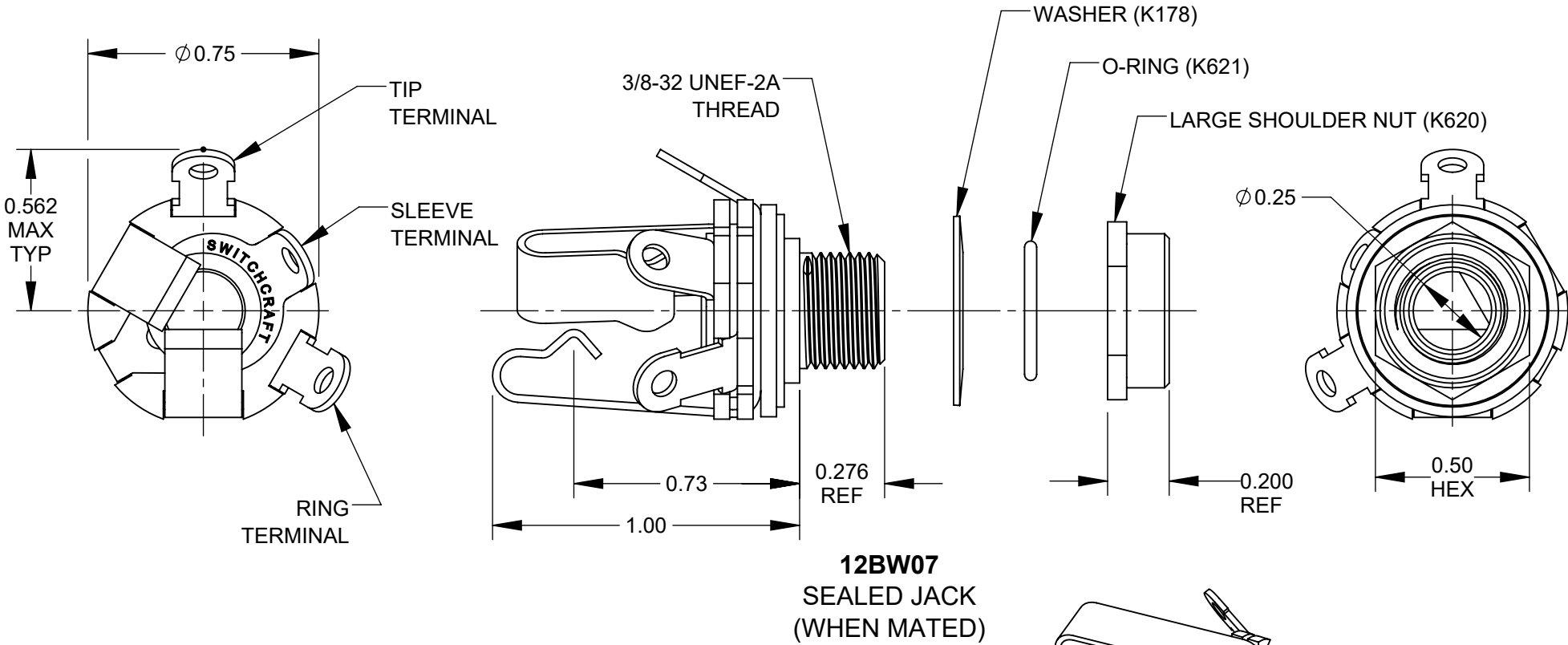


	PANEL THICKNESS AND HARDWARE INSTALLATION															
	12BW07 - LARGE SHOULDER NUT (K620)									12BW11 - SMALL SHOULDER NUT (K619)						
PANEL THICKNESS	0.050	0.055	0.060	0.065	0.070	0.075	0.080	0.085	0.090	0.095	0.100	0.105	0.110	0.115	0.120	0.125
WASHER (K178)	YES	YES	YES	YES	YES	NO	NO	NO	NO	YES	YES	YES	YES	YES	NO	NO



- NOTES:
1. INSTALLATION - SEE THE PANEL THICKNESS AND HARDWARE INSTALLATION TABLE.
INSTALL THE JACK AND THE WASHER (IF NEEDED) FROM THE BACK OF THE PANEL.
INSTALL THE O-RING AND THEN THE SHOULDER NUT FROM THE FRONT OF THE PANEL.
TIGHTEN THE NUT.
 2. TO BE USED WITH SWITCHCRAFT 267S15-S28 SERIES PLUGS FOR IP66 RATING WHEN MATED.
 3. RECOMMENDED MOUNTING HOLE: Ø0.375 [9.5]
 4. RECOMMENDED WORKING TEMPERATURE: -20 TO 50 °C.

5. MATERIALS:
- BUSHING - BRASS, NICKEL PLATED
 - INSULATING WASHERS, PHENOLIC
 - SLEEVE TERMINAL - BRASS, HOT TIN COATED
 - TIP & RING SPRING - NICKEL SILVER
 - O-RING - RUBBER
 - METAL WASHERS - STEEL, NICKEL PLATED
 - SHOULDER NUT - BRASS, NICKEL PLATED

6. THIS PRODUCT IS RoHS COMPLIANT.

						THIS DRAWING DESCRIBES A DESIGN CONSIDERED PROPRIETARY IN NATURE, DEVELOPED AND MANUFACTURED BY SWITCHCRAFT INC. AND IS RELEASED ON A CONFIDENTIAL BASIS FOR IDENTIFICATION PURPOSES ONLY.									
					UNLESS OTHERWISE SPECIFIED 1. ALL DIMENSIONS IN INCHES [mm] - TWO PLACE DECIMALS ±0.02 [0.5] - THREE PLACE DECIMALS ±0.005 [0.13]	SIZE	WIDTH		MULT		LBS/M		TEMPER		
						FINISH SPEC No.					MATERIAL SPEC No.				
						FIRST USED ON			SCALE 2:1		Switchcraft®				
						DATE DRAWN 2/17/20	BY NS	CHKD NS 2/17/20		APVD SRC 2/17/20					
A	28492	5/18/22	TJK	TJK			SHEET 1 OF 1								
REV	ECO NUMBER	DATE	BY	APVD			NAME SEALED 1/4" STEREO JACK, RoHS					PART No. 12BW07-W11			REV A
REVISIONS					DO NOT SCALE DRAWING										

Mouser Electronics

Authorized Distributor

Click to View Pricing, Inventory, Delivery & Lifecycle Information:

Switchcraft:

[12BW07](#) [12BW11](#)