

NOTES:

1. HARDWARE SHIPPED UNASSEMBLED.
K178 WASHER AND K180 HEX NUT.

2. MATERIALS:

BUSHING - BRASS, NICKEL PLATED

INSULATING WASHERS - PHENOLIC

SLEEVE TERMINAL - BRASS, HOT TIN COATED

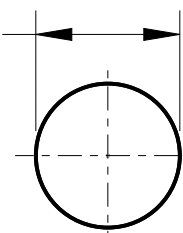
TIP & SHUNT SPRINGS - COPPER ALLOY, SILVER PLATED

METAL WASHERS - STEEL, NICKEL PLATED

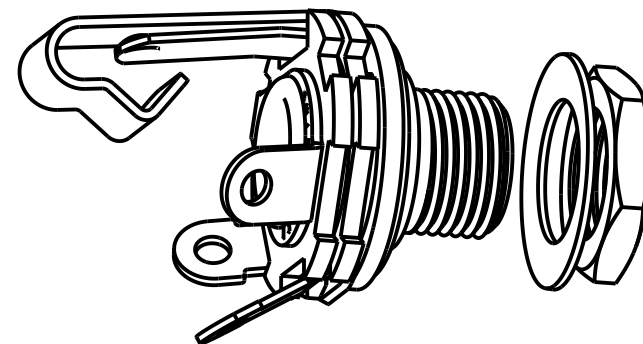
HEX NUT - BRASS, NICKEL PLATED

3. THIS PRODUCT IS RoHS COMPLIANT.

0.375 +0.020
-0.000



MOUNTING HOLE



CUSTOMER DRAWING



STAR SYMBOL DENOTES CRITICAL DIMENSION

THIS DRAWING DESCRIBES A DESIGN CONSIDERED PROPRIETARY IN NATURE, DEVELOPED AND MANUFACTURED BY SWITCHCRAFT INC. AND IS RELEASED ON A CONFIDENTIAL BASIS FOR IDENTIFICATION PURPOSES ONLY.

UNLESS OTHERWISE SPECIFIED

- ALL DIMENSIONS IN INCHES
-TWO PLACE DECIMALS ± 0.01
-THREE PLACE DECIMALS ± 0.005
-ANGLES $\pm 1^\circ$
-ALL DIA. CONCENTRIC WITHIN 0.005 T.I.R.

- FEATURES ON THE SAME CENTERLINE
MUST BE ALIGNED WITHIN ± 0.002

- REMOVE ALL BURRS

SIZE		WIDTH		MULT		LBS/M		TEMPER	
FINISH SPEC No.					MATERIAL SPEC No.				
FIRST USED ON			SCALE 2:1		Switchcraft®				
DATE DRAWN	BY	CHKD	APVD						
8-26-94	WJS	CJD 5-27-64	LG 6-2-64		SHEET 1 OF 1				
NAME 2 CONDUCTOR 1/4" LITTEL JAX, RoHS					PART No. 12A			REV E	

REV	ECO NUMBER	DATE	BY	APVD
E	REDRAWN - 26696	1-20-11	TJK	TJK
REVISIONS				

DO NOT SCALE DRAWING

Mouser Electronics

Authorized Distributor

Click to View Pricing, Inventory, Delivery & Lifecycle Information:

[Switchcraft:](#)

[12A](#)