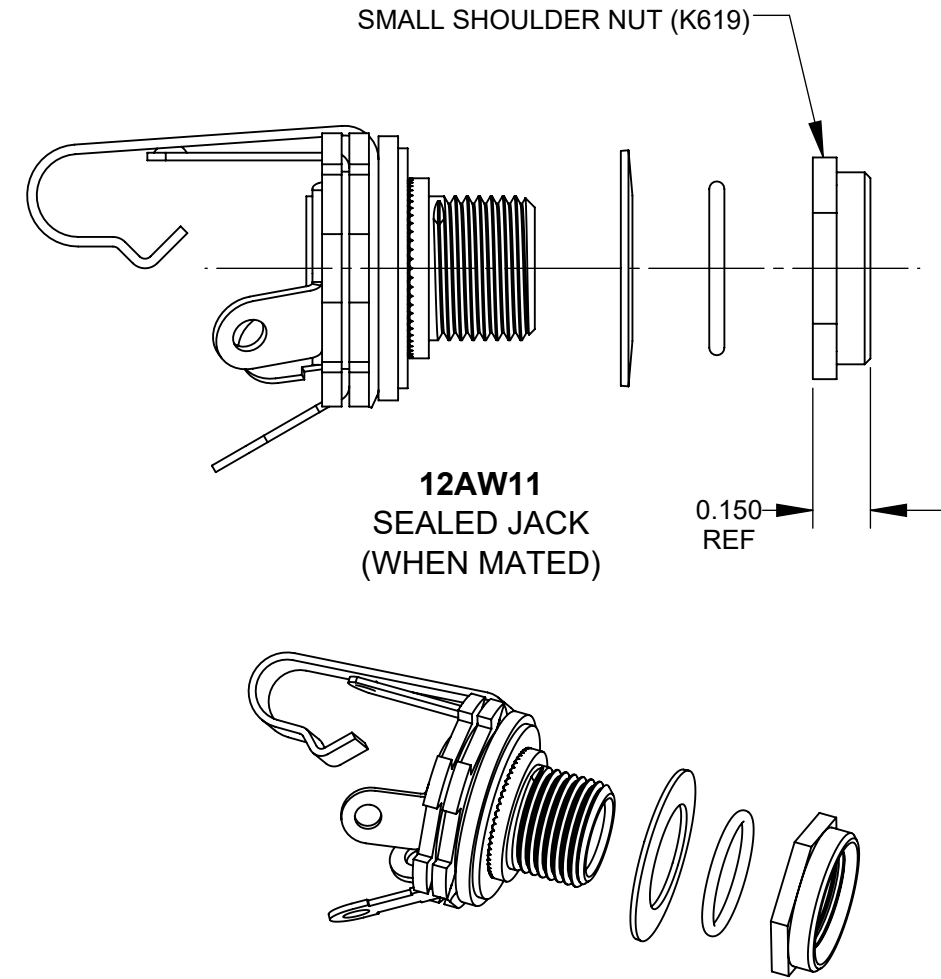
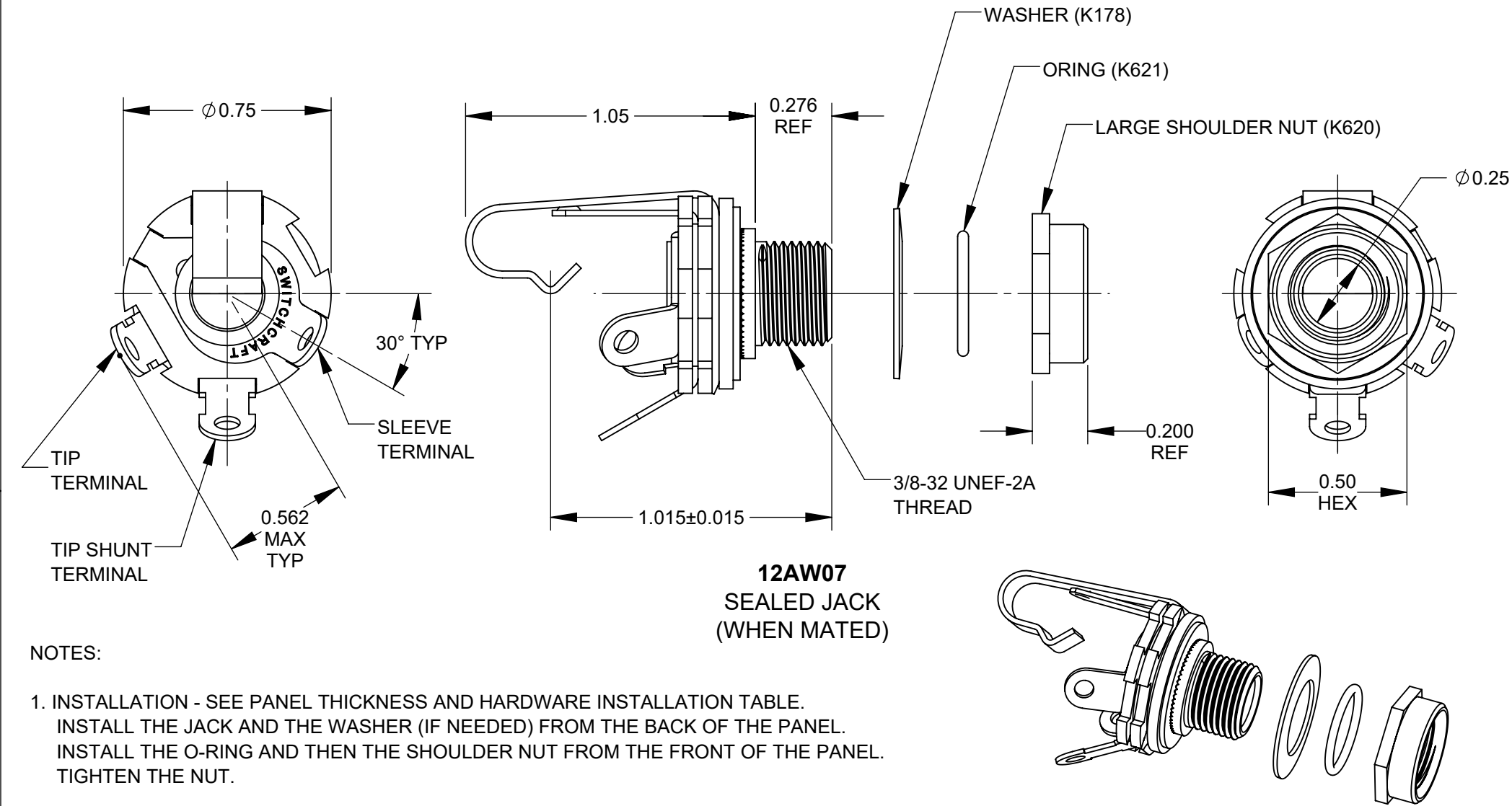


	PANEL THICKNESS AND HARDWARE INSTALLATION															
	12AW07 - LARGE SHOULDER NUT (K620)									12AW11 - SMALL SHOULDER NUT (K619)						
PANEL THICKNESS	0.050	0.055	0.060	0.065	0.070	0.075	0.080	0.085	0.090	0.095	0.100	0.105	0.110	0.115	0.120	0.125
WASHER (K178)	YES	YES	YES	YES	YES	NO	NO	NO	NO	YES	YES	YES	YES	YES	NO	NO



NOTES:

- INSTALLATION - SEE PANEL THICKNESS AND HARDWARE INSTALLATION TABLE. INSTALL THE JACK AND THE WASHER (IF NEEDED) FROM THE BACK OF THE PANEL. INSTALL THE O-RING AND THEN THE SHOULDER NUT FROM THE FRONT OF THE PANEL. TIGHTEN THE NUT.
- TO BE USED WITH SWITCHCRAFT 250S15-S28 SERIES PLUGS. IP66 RATED WHEN MATED.
- RECOMMENDED MOUNTING HOLE: $\varnothing 0.375"$ [9.5MM]
- RECOMMENDED WORKING TEMPERATURE: -20 TO 50 °C.
- MATERIALS:
BUSHING - BRASS NICKEL PLATED
INSULATING WASHERS - PHENOLIC
SLEEVE TERMINAL - BRASS, HOT TIN COATED
TIP & TIP SHUNT SPRING - COPPER ALLOY, SILVER PLATED
O-RING - RUBBER
METAL WASHERS - STEEL, NICKEL PLATED
SHOULDER NUT - BRASS, NICKEL PLATED
- RoHS COMPLIANT.

					<div>UNLESS OTHERWISE SPECIFIED</div> <div>1. ALL DIMENSIONS IN INCHES [mm]</div> <div>- TWO PLACE DECIMALS ±0.02 [0.5]</div> <div>- THREE PLACE DECIMALS ±0.005 [0.13]</div>	THIS DRAWING DESCRIBES A DESIGN CONSIDERED PROPRIETARY IN NATURE, DEVELOPED AND MANUFACTURED BY SWITCHCRAFT INC. AND IS RELEASED ON A CONFIDENTIAL BASIS FOR IDENTIFICATION PURPOSES ONLY.											
						SIZE	WIDTH		MULT		LBS/M		TEMPER				
						FINISH SPEC No.						MATERIAL SPEC No.					
						FIRST USED ON				SCALE 1:1		<div>Switchcraft®</div>					
						DATE DRAWN	BY	CHKD		APVD							
A	28492	5/18/22	TJK	TJK		2/17/20	NS	NS 2/17/20		SRC 2/17/20							
REV	ECO NUMBER	DATE	BY	APVD		NAME						PART No.				REV	
REVISIONS					DO NOT SCALE DRAWING		SEALED 1/4" MONO JACK, RoHS						12AW07-W11				A

Mouser Electronics

Authorized Distributor

Click to View Pricing, Inventory, Delivery & Lifecycle Information:

Switchcraft:

[12AW07](#) [12AW11](#)