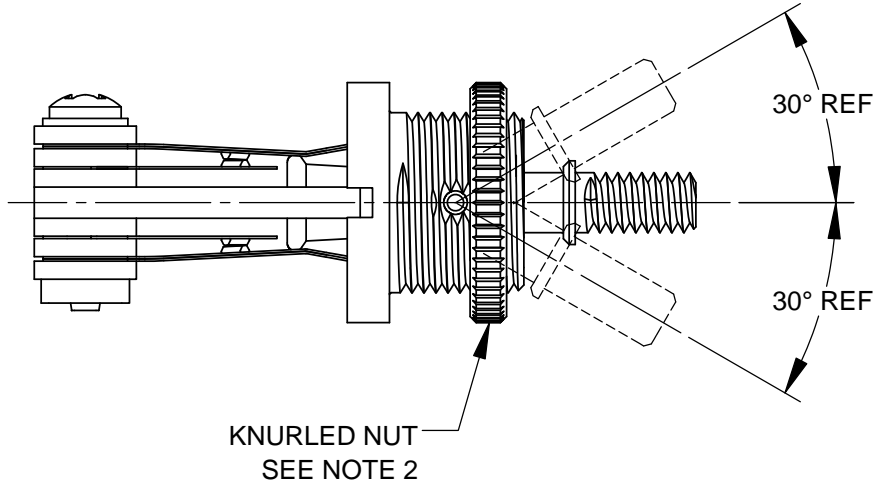
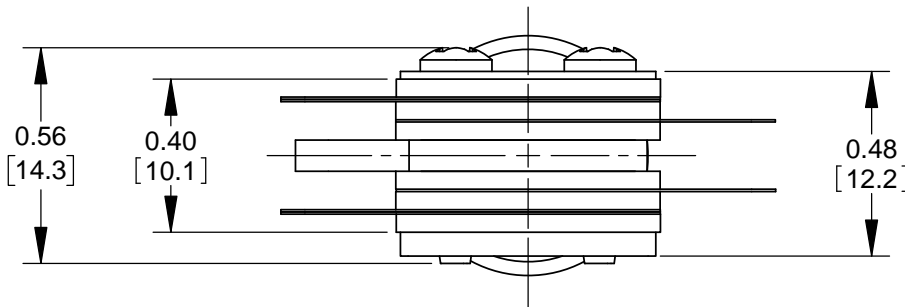
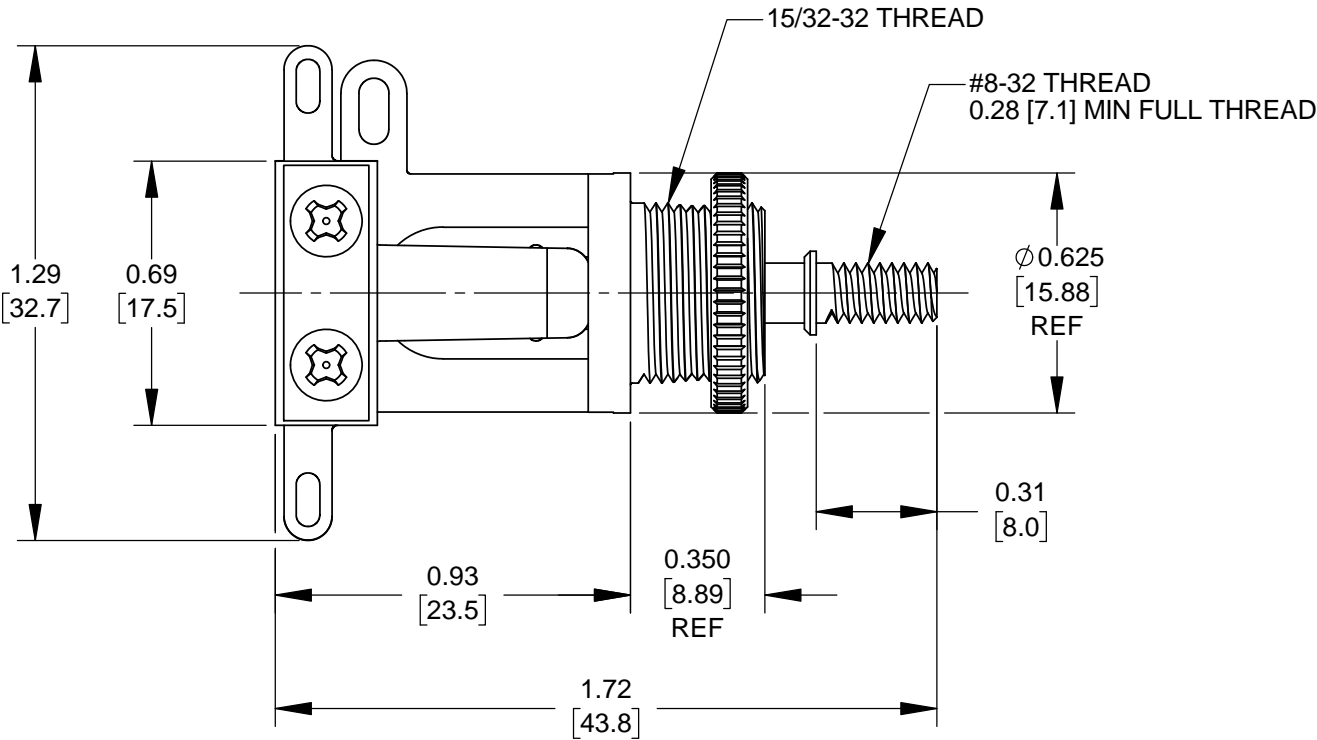


SCHEMATIC



- NOTES:
1. MATERIALS:  
FRAME, BUSHING, SHAFT- COPPER ALLOY, NICKEL PLATED  
SHAFT INSULATOR - NYLON  
PIN - STAINLESS STEEL  
SPRINGS - SPRING TEMPERED, NICKEL SILVER  
CONTACTS - GOLD  
SPACERS - PHENOLIC  
TUBING - THERMOPLASTIC  
PRESSURE PLATE - NICKEL SILVER  
TWIN NUT - STEEL, NICKEL PLATED  
SCREWS - STEEL, ZINC PLATED  
HARDWARE:  
KNURLED NUT - COPPER ALLOY, NICKEL PLATED
  2. HARDWARE SHIPPED UNASSEMBLED.
  3. THIS PRODUCT IS RoHS COMPLIANT.

CUSTOMER DRAWING

					THIS DRAWING DESCRIBES A DESIGN CONSIDERED PROPRIETARY IN NATURE, DEVELOPED AND MANUFACTURED BY SWITCHCRAFT INC. AND IS RELEASED ON A CONFIDENTIAL BASIS FOR IDENTIFICATION PURPOSES ONLY.				
					SIZE	WIDTH	MULT	LBS/M	TEMPER
					FINISH SPEC No.			MATERIAL SPEC No.	
					FIRST USED ON		SCALE 2:1		Switchcraft®
					DATE DRAWN	BY	CHKD	APVD	
					03-11-08	SRC	SRC	TJK	
					03-11-08		03-11-08		
					NAME 3 POSITION LOCKING SHORT FRAME LEVER SWITCH, RoHS			PART No.	REV
								12120X	B
					DO NOT SCALE DRAWING				
					SolidWorks CAD File B				

# Mouser Electronics

Authorized Distributor

Click to View Pricing, Inventory, Delivery & Lifecycle Information:

[Switchcraft:](#)

[12120X](#)