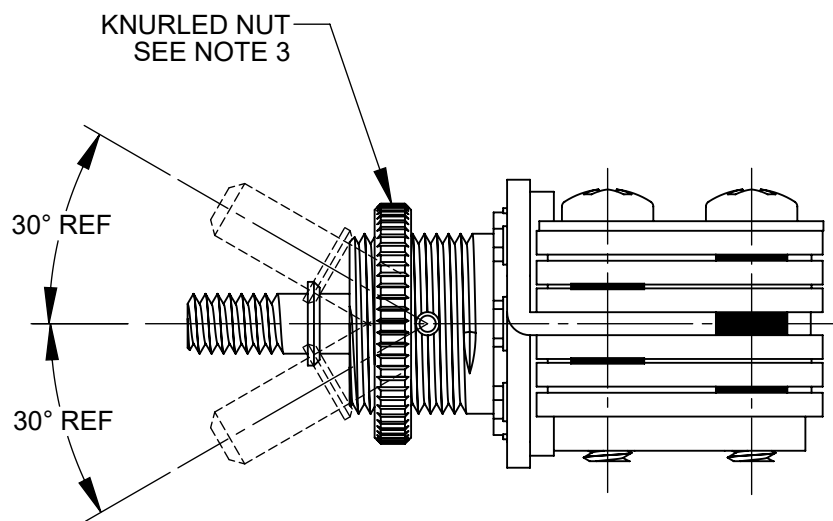
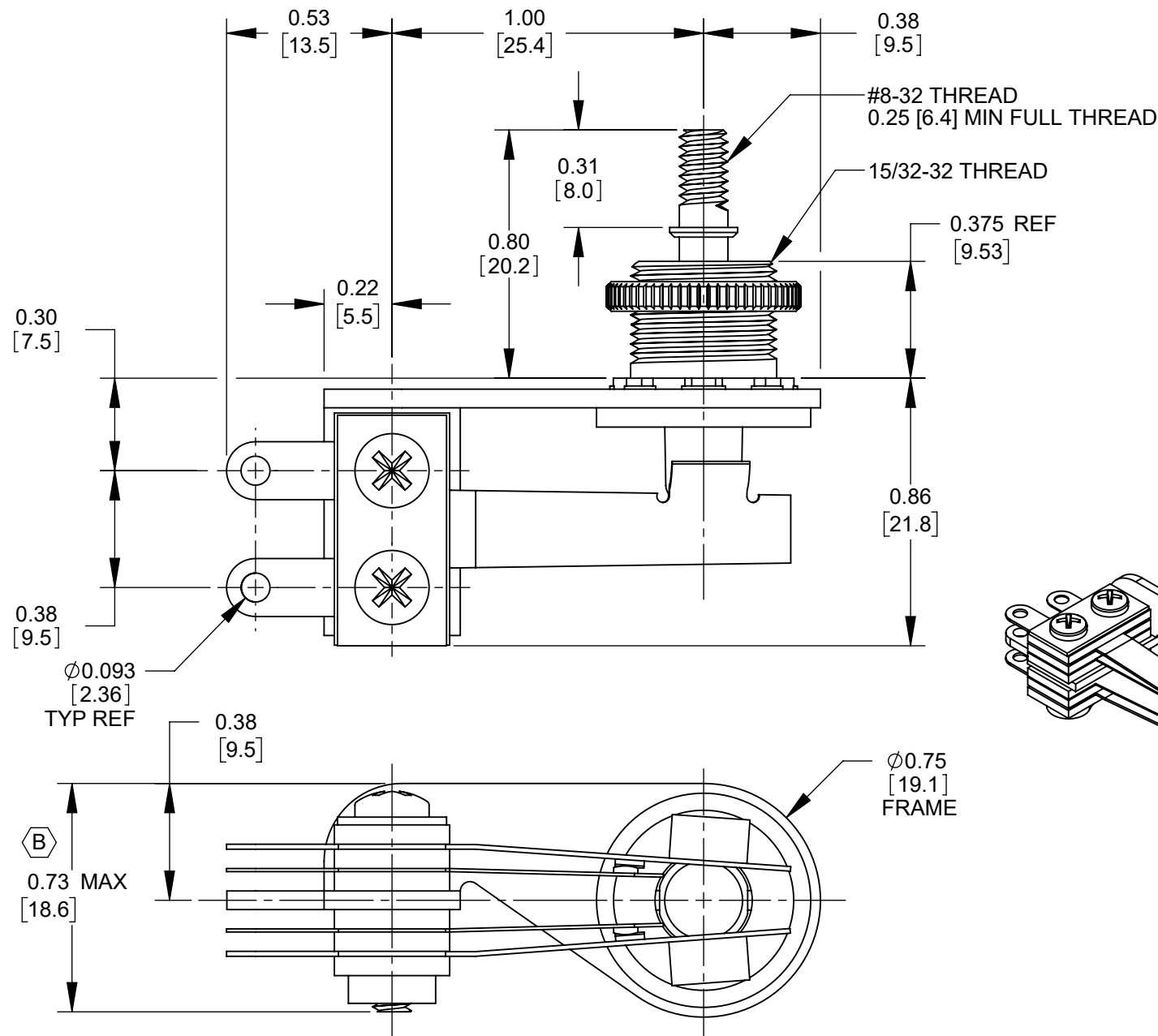




SCHEMATIC



- NOTES:
- MATERIALS:  
FRAME - STEEL, NICKEL PLATED  
SPRINGS - SPRING TEMPERED, NICKEL SILVER  
BUSHING & SHAFT - BRASS, BARE  
INSULATION - PHENOLIC  
CONTACTS - FINE SILVER  
SCREWS - STEEL, NICKEL PLATED  
SHAFT INSULATOR - NYLON  
TUBING - THERMOPLASTIC  
HARDWARE:  
KNURLED NUT - BRASS, BARE
  - ELECTRICAL CHARACTERISTICS:  
- CONTACT RESISTANCE: 20 MILLIOHMS MAX  
- CONTACT RATING: 3A, 300W MAX AC NON-INDUCTIVE LOAD  
- LEAKAGE RESISTANCE: 1000 MEGAOHMS OR GREATER  
- DIELECTRIC STRENGTH: 250 VDC
  - HARDWARE SHIPPED UNASSEMBLED.
  - THIS PRODUCT IS RoHS COMPLIANT.



CUSTOMER DRAWING

					THIS DRAWING DESCRIBES A DESIGN CONSIDERED PROPRIETARY IN NATURE, DEVELOPED AND MANUFACTURED BY SWITCHCRAFT INC. AND IS RELEASED ON A CONFIDENTIAL BASIS FOR IDENTIFICATION PURPOSES ONLY.				
					SIZE	WIDTH	MULT	LBS/M	TEMPER
					FINISH SPEC No.				MATERIAL SPEC No.
					FIRST USED ON		SCALE 2:1		
					DATE DRAWN	BY	CHKD	APVD	Switchcraft®
					2/16/10	RS	RS 2/16/10	TJK 04/28/20	
					NAME 12000 SERIES RIGHT-ANGLE LEVER SWITCH 3 POSITION LOCKING, RoHS				PART No.
									12016X
									REV B

# Mouser Electronics

Authorized Distributor

Click to View Pricing, Inventory, Delivery & Lifecycle Information:

[Switchcraft:](#)

[12016X](#)