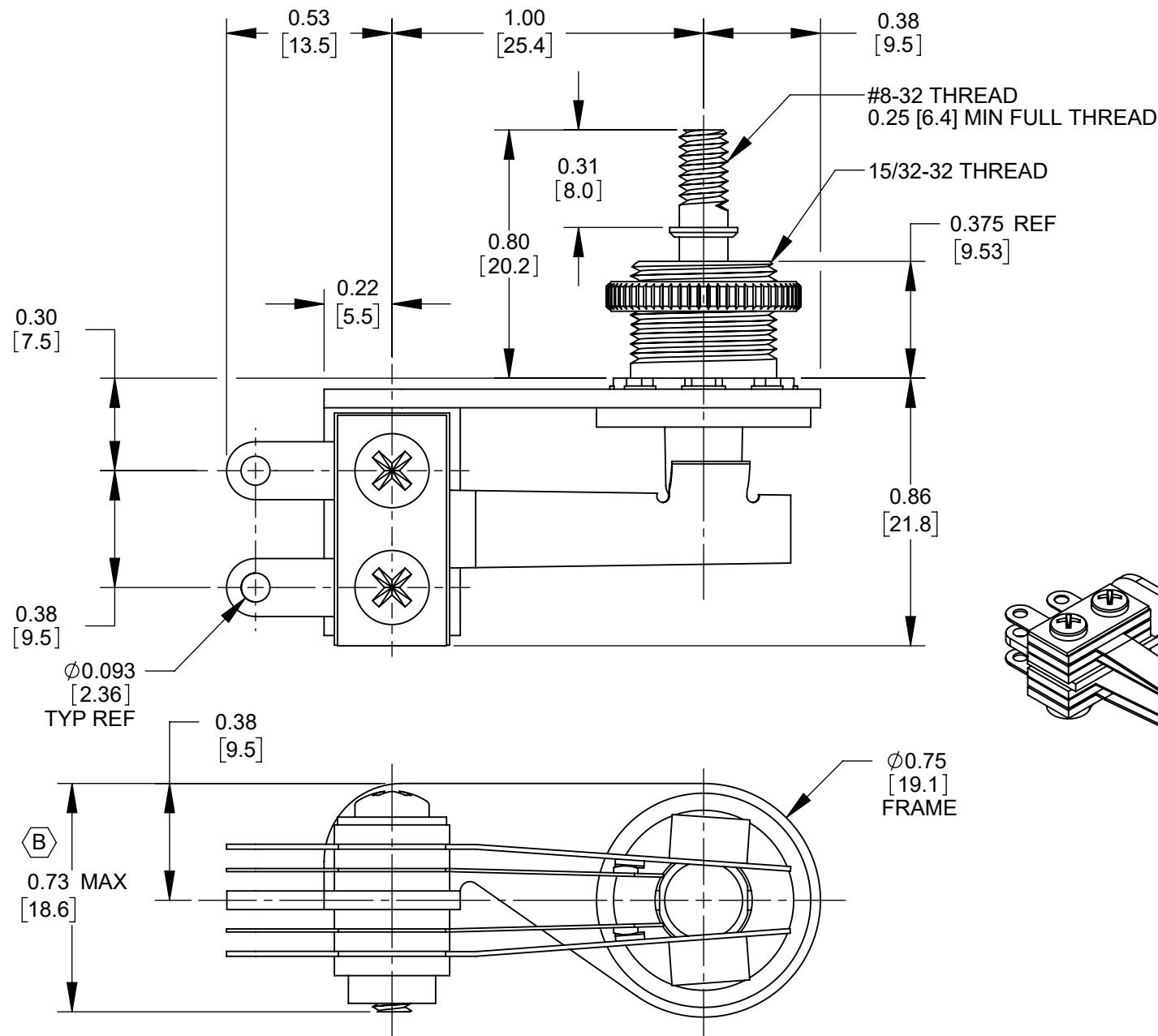
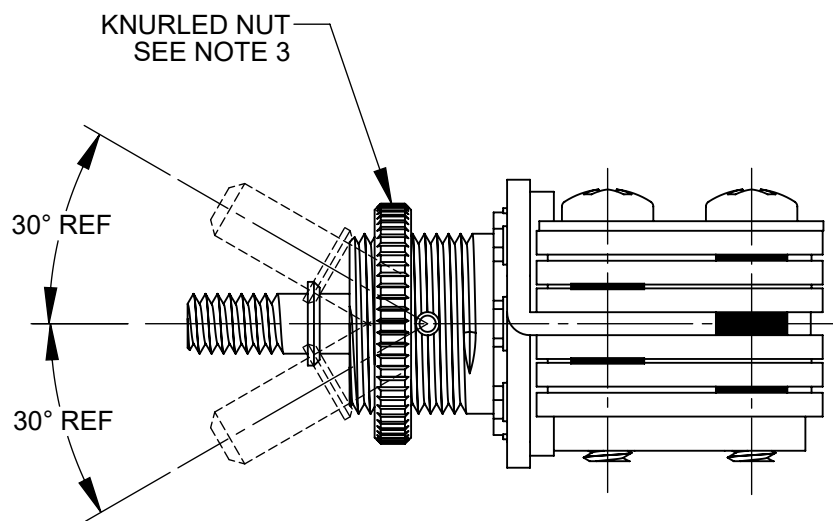




SCHEMATIC



NOTES:

- MATERIALS:  
FRAME - STEEL, NICKEL PLATED  
SPRINGS - SPRING TEMPERED, NICKEL SILVER  
BUSHING & SHAFT - BRASS, BARE  
INSULATION - PHENOLIC  
CONTACTS - FINE SILVER  
SCREWS - STEEL, NICKEL PLATED  
SHAFT INSULATOR - NYLON  
TUBING - THERMOPLASTIC  
HARDWARE:  
KNURLED NUT - BRASS, BARE
- ELECTRICAL CHARACTERISTICS:  
- CONTACT RESISTANCE: 20 MILLIOHMS MAX  
- CONTACT RATING: 3A, 300W MAX AC NON-INDUCTIVE LOAD  
- LEAKAGE RESISTANCE: 1000 MEGAOHMS OR GREATER  
- DIELECTRIC STRENGTH: 250 VDC
- HARDWARE SHIPPED UNASSEMBLED.
- THIS PRODUCT IS RoHS COMPLIANT.

CUSTOMER DRAWING

					<div>UNLESS OTHERWISE SPECIFIED</div> <div>1. ALL DIMENSIONS IN INCHES [mm]</div> <div>- TWO PLACE DECIMALS ±0.02 [0.5]</div> <div>- THREE PLACE DECIMALS ±0.005 [0.13]</div>	THIS DRAWING DESCRIBES A DESIGN CONSIDERED PROPRIETARY IN NATURE, DEVELOPED AND MANUFACTURED BY SWITCHCRAFT INC. AND IS RELEASED ON A CONFIDENTIAL BASIS FOR IDENTIFICATION PURPOSES ONLY.							
						SIZE	WIDTH		MULT	LBS/M	TEMPER		
						FINISH				MATERIAL			
						SPEC No.				SPEC No.			
						FIRST USED ON			SCALE		<div>Switchcraft®</div>		
									2:1				
						DATE DRAWN	BY	CHKD	APVD				
B	28409	07/09/21	PC	TJK	2/16/10	RS	RS	TJK					
A	25449	02/23/07	PC	TJK			2/16/10	04/28/20					
REV	ECO NUMBER	DATE	BY	APVD	NAME						PART No.	REV	
REVISIONS					DO NOT SCALE DRAWING					12000 SERIES RIGHT-ANGLE LEVER SWITCH 3 POSITION LOCKING, RoHS		12016X	B

# Mouser Electronics

Authorized Distributor

Click to View Pricing, Inventory, Delivery & Lifecycle Information:

[Switchcraft:](#)

[12016X](#)