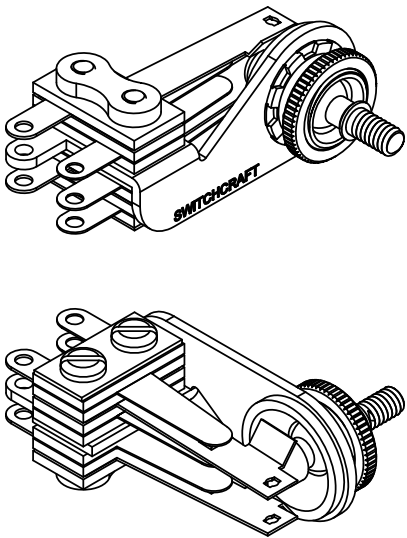
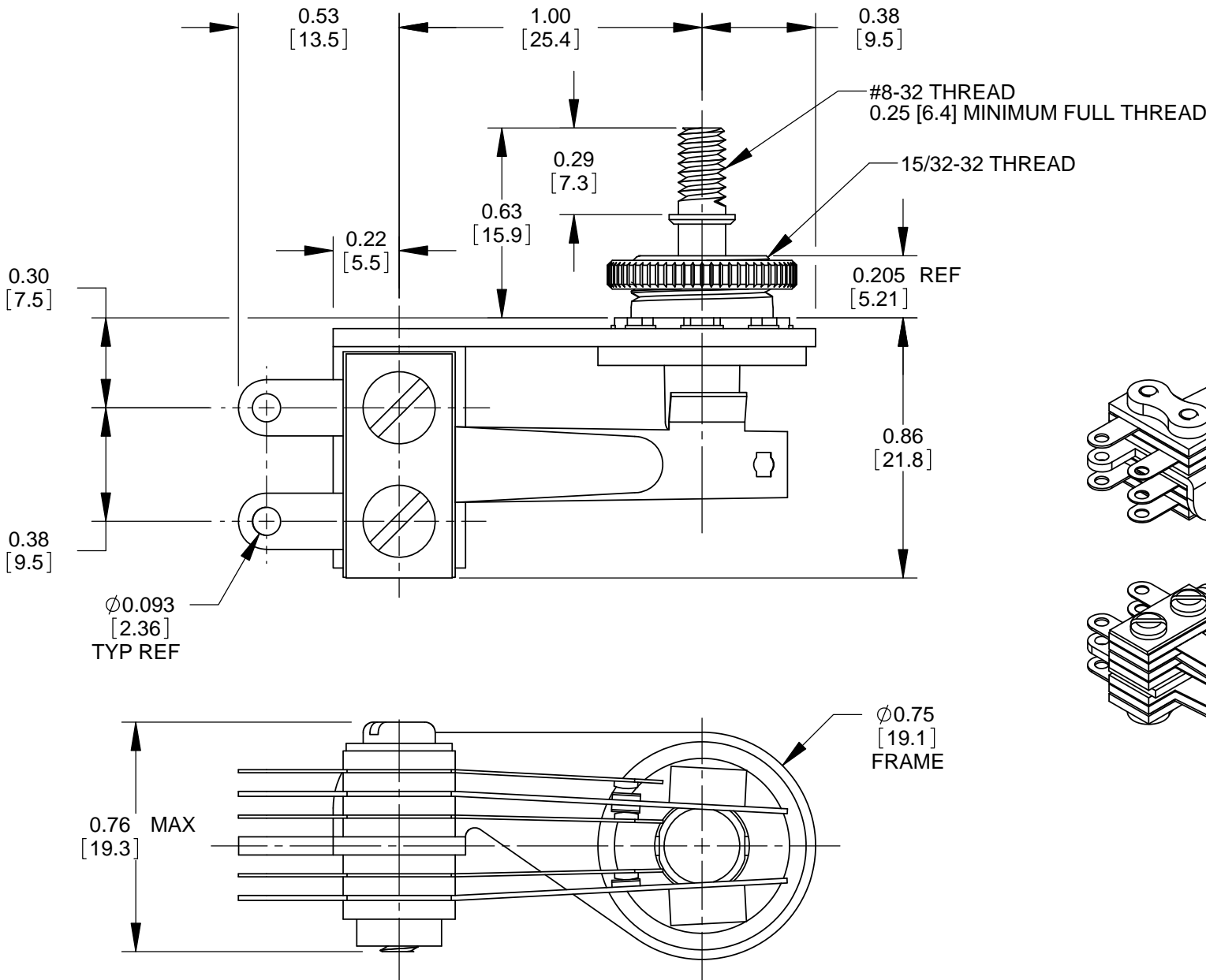
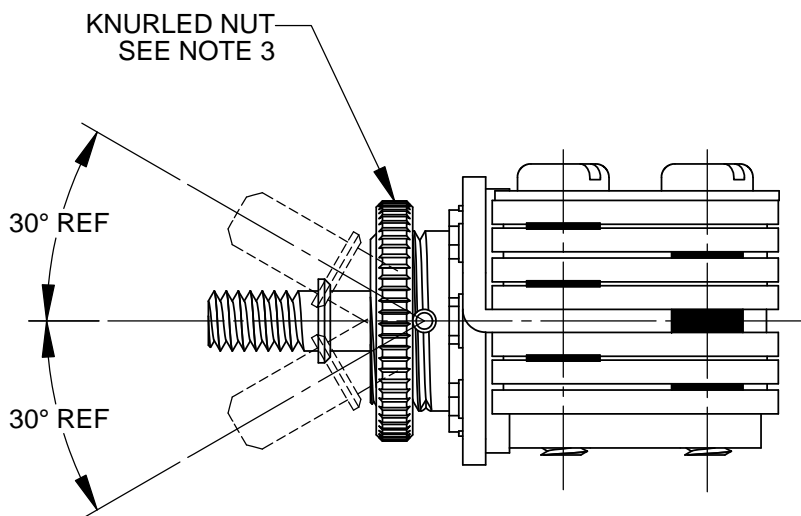


SCHEMATIC



NOTES:

- MATERIALS:
  - FRAME - STEEL, NICKEL PLATED
  - SPRINGS - SPRING TEMPERED, NICKEL SILVER
  - BUSHING & SHAFT - BRASS, NICKEL PLATED
  - INSULATION - PHENOLIC
  - CONTACTS - FINE SILVER
  - SCREWS - STEEL, NICKEL PLATED
  - SHAFT INSULATOR - NYLON
  - TUBING - THERMOPLASTIC
  - KNURLED NUT - BRASS, NICKEL PLATED
- ELECTRICAL CHARACTERISTICS:
  - CONTACT RESISTANCE: 20 MILLIOHMS MAX
  - CONTACT RATING: 3A, 300W MAX AC NON-INDUCTIVE LOAD
  - LEAKAGE RESISTANCE: 1000 MEGAOHMS OR GREATER
  - DIELECTRIC STRENGTH: 250 VDC
- HARDWARE SHIPPED UNASSEMBLED.
- THIS PRODUCT IS RoHS COMPLIANT.

CUSTOMER DRAWING

					<div>UNLESS OTHERWISE SPECIFIED</div> <div>1. ALL DIMENSIONS IN INCHES [mm]</div> <div>- TWO PLACE DECIMALS    ±0.02 [0.5]</div> <div>- THREE PLACE DECIMALS   ±0.005 [0.13]</div>	THIS DRAWING DESCRIBES A DESIGN CONSIDERED PROPRIETARY IN NATURE, DEVELOPED AND MANUFACTURED BY SWITCHCRAFT INC. AND IS RELEASED ON A CONFIDENTIAL BASIS FOR IDENTIFICATION PURPOSES ONLY.															
						SIZE	WIDTH		MULT		LBS/M		TEMPER								
						FINISH						MATERIAL									
						SPEC No.						SPEC No.									
						FIRST USED ON				SCALE 2:1		<div>Switchcraft®</div>									
B	28121	12/11/18	PC	TJK		DATE DRAWN	BY	CHKD		APVD											
A	26166	10/18/06	PC	TJK		3/16/10	RS	RS		TJK											
REV	ECO NUMBER	DATE	BY	APVD			3/16/10		02/12/20		SHEET 1 OF 1										
					NAME					RIGHT-ANGLE LEVER SWITCH, 3 POSITION LOCKING, RoHS					PART No.		REV				
REVISIONS					DO NOT SCALE DRAWING										12012X					B	

# Mouser Electronics

Authorized Distributor

Click to View Pricing, Inventory, Delivery & Lifecycle Information:

[Switchcraft:](#)

[12012](#) [12012X](#)