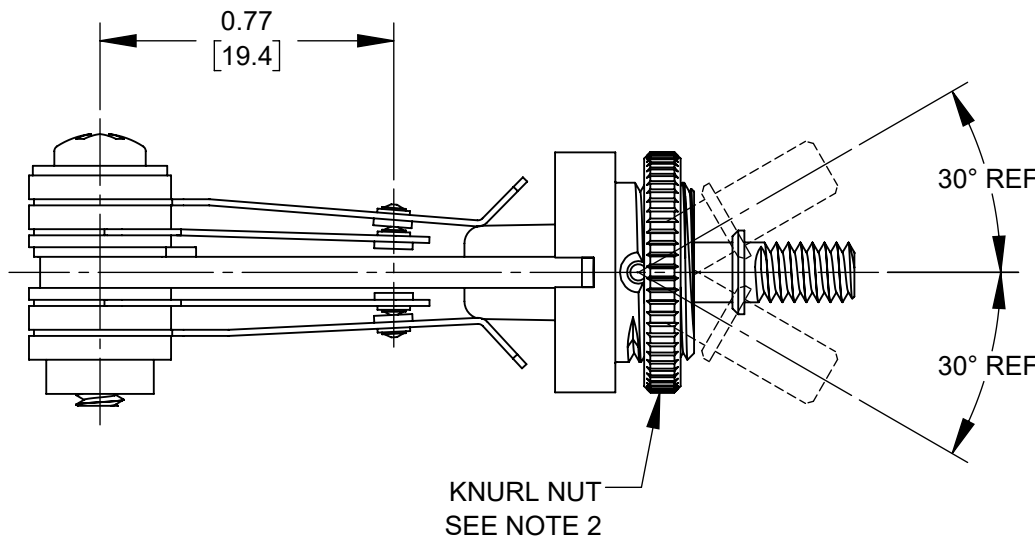
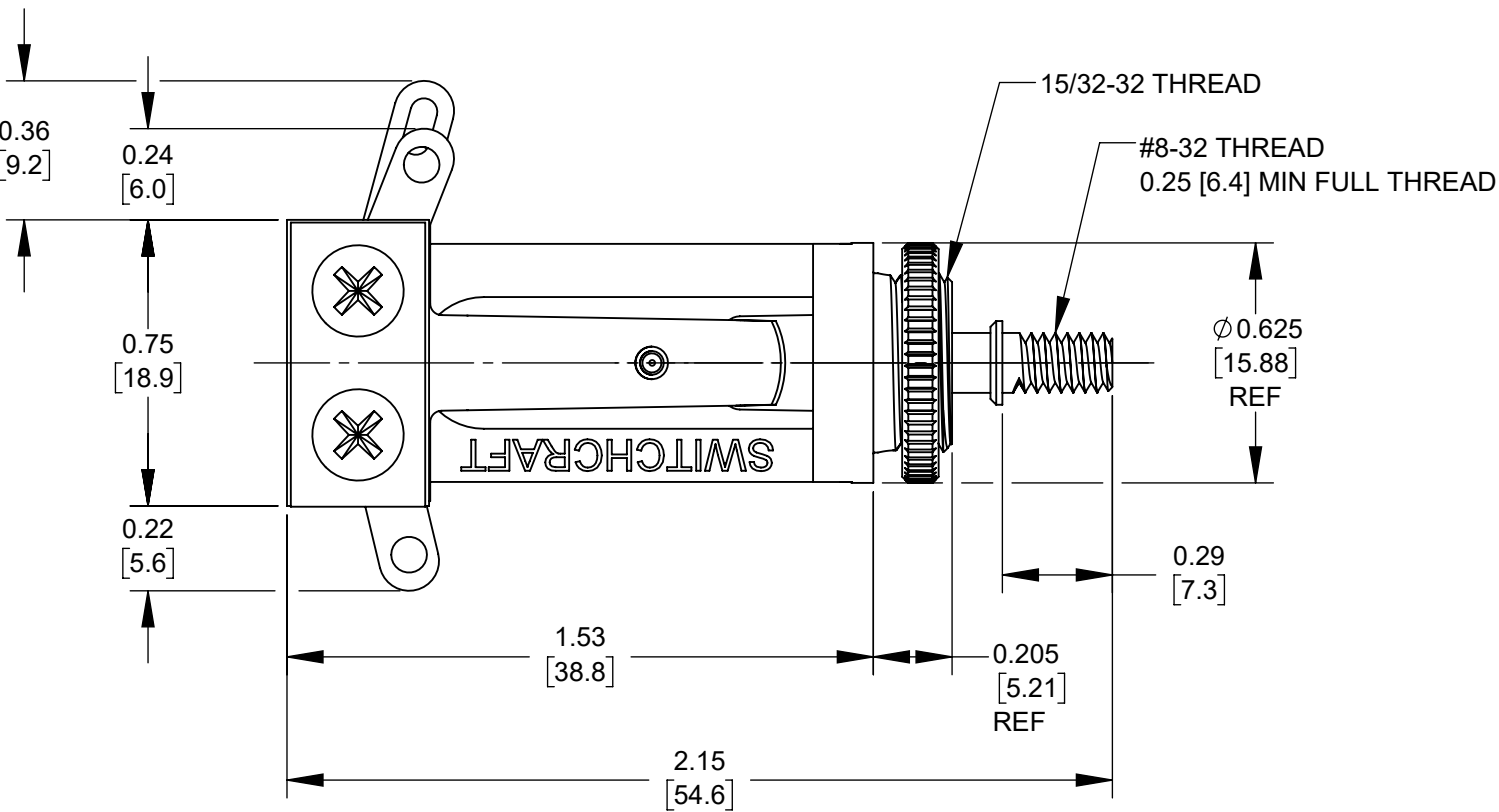
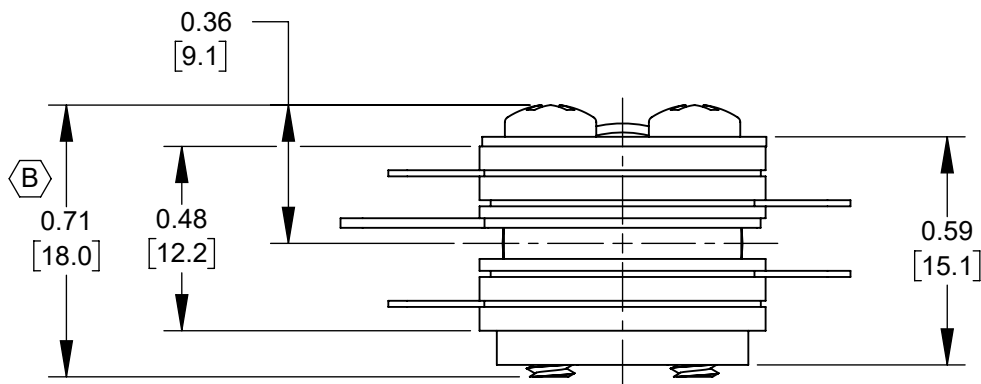


SCHEMATIC



- NOTES:
- MATERIALS:
FRAME, BUSHING, SHAFT- COPPER ALLOY, BARE
SHAFT INSULATOR - NYLON
PIN - STAINLESS STEEL
SPRINGS - SPRING TEMPERED, NICKEL SILVER
CONTACTS - FINE SILVER
SPACERS - PHENOLIC
TUBING - THERMOPLASTIC
PRESSURE PLATE - STEEL, NICKEL PLATED
TWIN NUT - STEEL, NICKEL PLATED
SCREWS - STEEL, NICKEL PLATED
HARDWARE:
KNURLED NUT - COPPER ALLOY, BARE
 - HARDWARE SHIPPED UNASSEMBLED.
 - THIS PRODUCT IS RoHS COMPLIANT.

CUSTOMER DRAWING

					<div>UNLESS OTHERWISE SPECIFIED</div> <div>1. ALL DIMENSIONS IN INCHES [mm]</div> <div>- TWO PLACE DECIMALS ±0.02 [0.5]</div> <div>- THREE PLACE DECIMALS ±0.005 [0.13]</div>	THIS DRAWING DESCRIBES A DESIGN CONSIDERED PROPRIETARY IN NATURE, DEVELOPED AND MANUFACTURED BY SWITCHCRAFT INC. AND IS RELEASED ON A CONFIDENTIAL BASIS FOR IDENTIFICATION PURPOSES ONLY.											
						SIZE	WIDTH		MULT		LBS/M		TEMPER				
						FINISH SPEC No.						MATERIAL SPEC No.					
						FIRST USED ON				SCALE 2:1		<div>Switchcraft®</div>					
B	28409	07-09-21	PC	TJK		DATE DRAWN	BY	CHKD		APVD							
A	26240	02-23-07	PC	TJK		07-23-20	PC	PC		TJK		SHEET 1 OF 1					
REV	ECO NUMBER	DATE	BY	APVD		NAME 3 POSITION LOCKING LONG FRAME LEVER SWITCH, RoHS						PART No. 12011X				REV B	
REVISIONS					DO NOT SCALE DRAWING												

Mouser Electronics

Authorized Distributor

Click to View Pricing, Inventory, Delivery & Lifecycle Information:

[Switchcraft:](#)

[12011X](#)