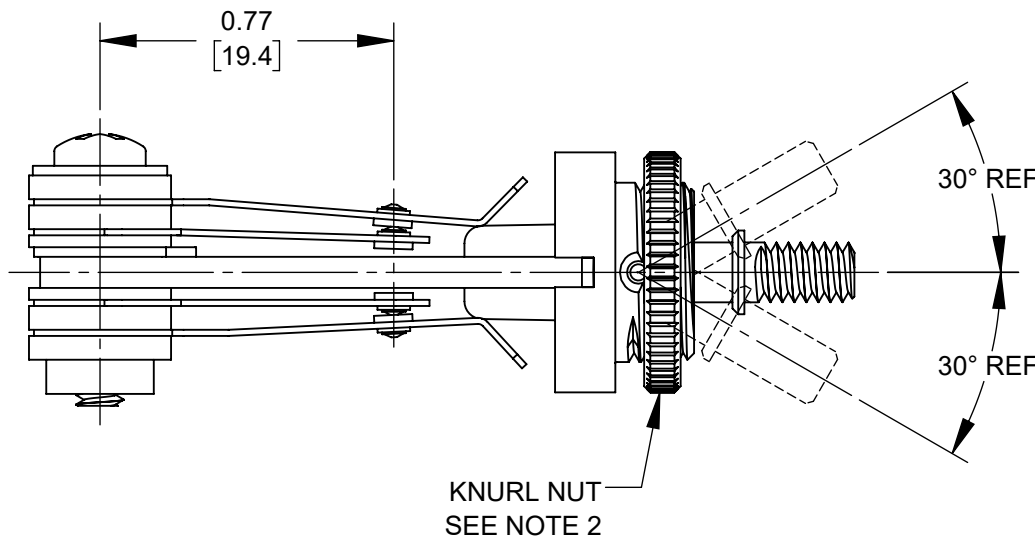
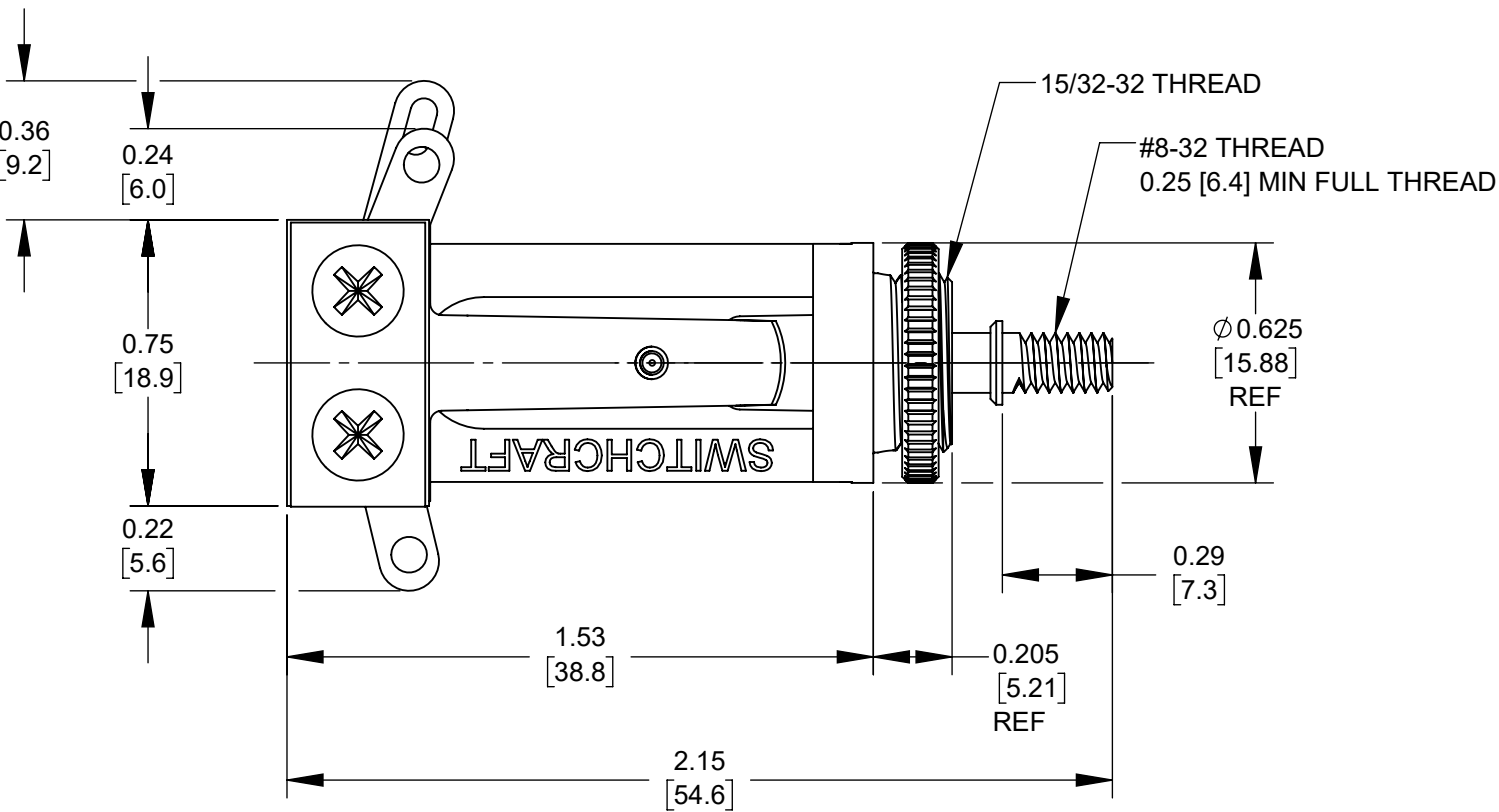
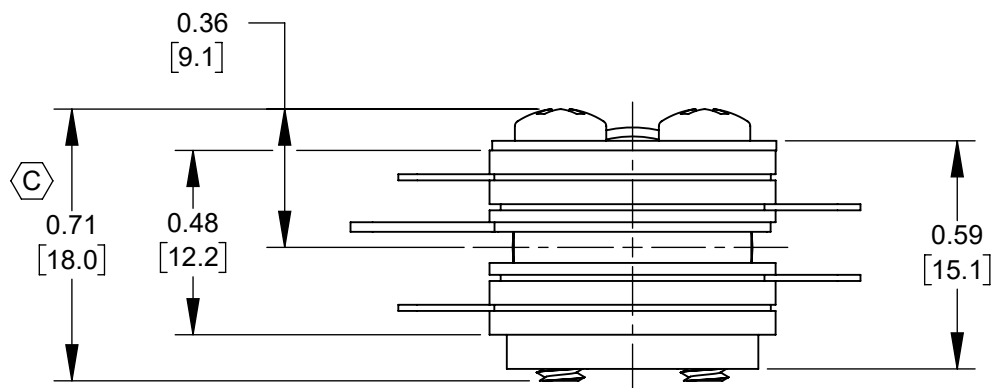


**SCHEMATIC**



- NOTES:
- MATERIALS:  
FRAME, BUSHING, SHAFT- COPPER ALLOY, NICKEL PLATED  
SHAFT INSULATOR - NYLON  
PIN - STAINLESS STEEL  
SPRINGS - SPRING TEMPERED, NICKEL SILVER  
CONTACTS - FINE SILVER  
SPACERS - PHENOLIC  
TUBING - THERMOPLASTIC  
PRESSURE PLATE - STEEL, NICKEL PLATED  
TWIN NUT - STEEL, NICKEL PLATED  
SCREWS - STEEL, NICKEL PLATED  
HARDWARE:  
KNURLED NUT - COPPER ALLOY, NICKEL PLATED
  - HARDWARE SHIPPED UNASSEMBLED.
  - THIS PRODUCT IS RoHS COMPLIANT.

**CUSTOMER DRAWING**

						THIS DRAWING DESCRIBES A DESIGN CONSIDERED PROPRIETARY IN NATURE, DEVELOPED AND MANUFACTURED BY SWITCHCRAFT INC. AND IS RELEASED ON A CONFIDENTIAL BASIS FOR IDENTIFICATION PURPOSES ONLY.											
					UNLESS OTHERWISE SPECIFIED  1. ALL DIMENSIONS IN INCHES [mm]  - TWO PLACE DECIMALS    ±0.02    [0.5]  - THREE PLACE DECIMALS   ±0.005   [0.13]	SIZE		WIDTH		MULT		LBS/M		TEMPER			
						FINISH SPEC No.						MATERIAL SPEC No.					
						FIRST USED ON				SCALE 2:1		Switchcraft®					
C	28409	07-09-21	PC	TJK		DATE DRAWN 07-16-20	BY PC	CHKD PC 07-16-20		APVD TJK 07-16-20							
B	26978	06-28-12	PC	TJK													
A	26240	02-23-07	PC	TJK													
REV	ECO NUMBER	DATE	BY	APVD													
REVISIONS					DO NOT SCALE DRAWING		NAME     3 POSITION LOCKING LONG FRAME LEVER SWITCH, RoHS						PART No.  12010X				REV C

# Mouser Electronics

Authorized Distributor

Click to View Pricing, Inventory, Delivery & Lifecycle Information:

[Switchcraft:](#)

[12010X](#) [12010](#)