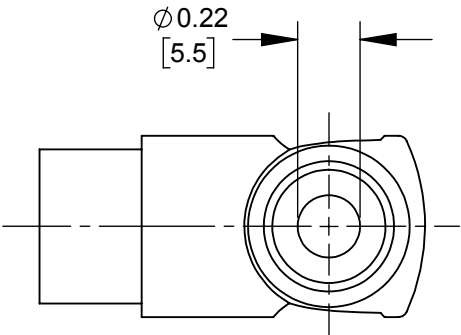
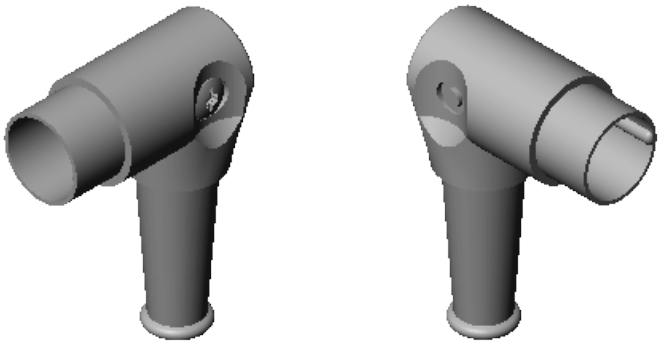


- NOTES:
- 1. PIN HOUSING WITH KEYWAY CAN BE ROTATED 45° 8 POSITIONS.
 - 2. Ø 0.04 [1.0mm] X 0.08 [2.0mm] DEEP HOLE IN PIN FOR SOLDERING.
 - 3. Ø 0.21 [5.4mm] ID X 0.39 [10.0mm] LONG CABLE CLAMP TUBE NOT SHOWN.
 - 4. MATERIALS:
TWO PIECE HANDLE & PIN HOUSING - ZINC ALLOY, NICKEL PLATED
INSERT - THERMOPLASTIC, BLACK
PINS - COPPER ALLOY, TIN PLATED
FLEX RELIEF - THERMOPLASTIC, BLACK
CABLE CLAMP TUBE - COPPER ALLOY
SCREW - STEEL, NICKEL PLATED
 - 5. SHIPPED ASSEMBLED.
 - 6. THESE PRODUCTS ARE RoHS COMPLIANT.



CUSTOMER DRAWING

						THIS DRAWING DESCRIBES A DESIGN CONSIDERED PROPRIETARY IN NATURE, DEVELOPED AND MANUFACTURED BY SWITCHCRAFT INC. AND IS RELEASED ON A CONFIDENTIAL BASIS FOR IDENTIFICATION PURPOSES ONLY.													
					UNLESS OTHERWISE SPECIFIED 1. ALL DIMENSIONS IN INCHES - TWO PLACE DECIMALS ±0.02 - THREE PLACE DECIMALS ±0.005	SIZE	WIDTH		MULT		LBS/M		TEMPER						
						FINISH SPEC No.						MATERIAL SPEC No.							
						FIRST USED ON				SCALE 3:2		Switchcraft®							
B	28010	3/14/18	TJK	TJK		DATE DRAWN 5-Jun-13	BY TO	CHKD TO 6-5-13		APVD TJK 6-6-13									
A	26000	3/3/06	TJK	TJK											SHEET 1 OF 1				
REV	ECO NUMBER	DATE	BY	APVD		NAME MALE DIN 5-7 PIN CORD PLUG CONNECTOR, RoHS									PART No. 05DL_MX, 12DL_MX, 15DL_MX SERIES				REV B
REVISIONS					DO NOT SCALE DRAWING														

Mouser Electronics

Authorized Distributor

Click to View Pricing, Inventory, Delivery & Lifecycle Information:

Switchcraft:

[15DL7M](#) [05DL5M](#) [12DL5M](#) [12DL6M](#) [12DL6MX](#)