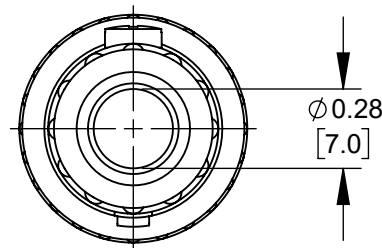
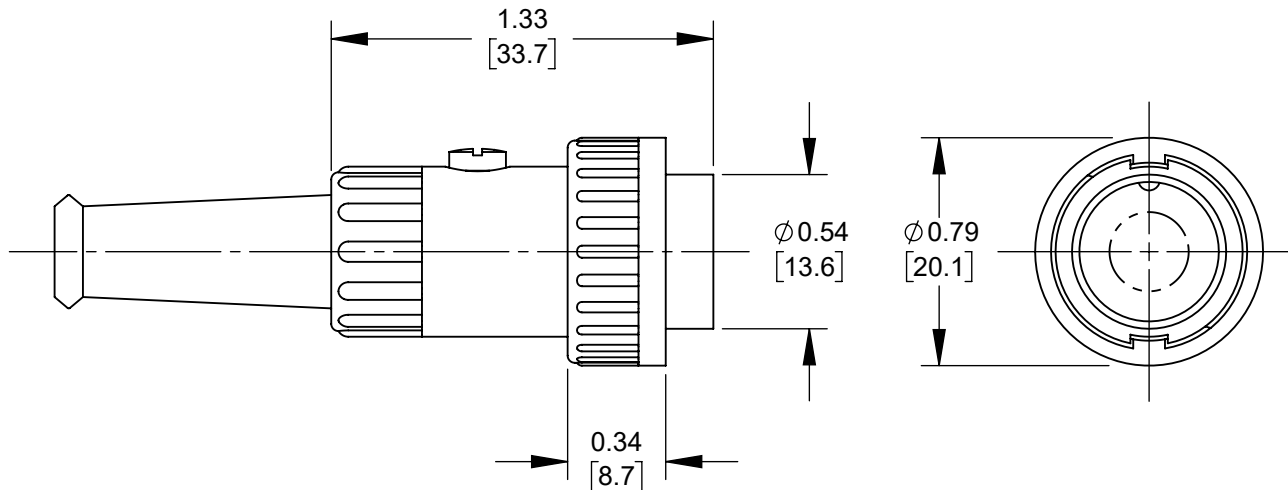
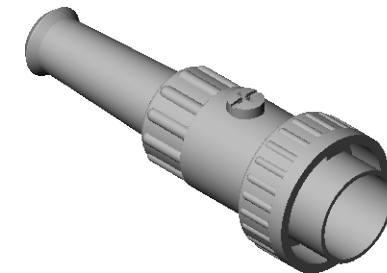
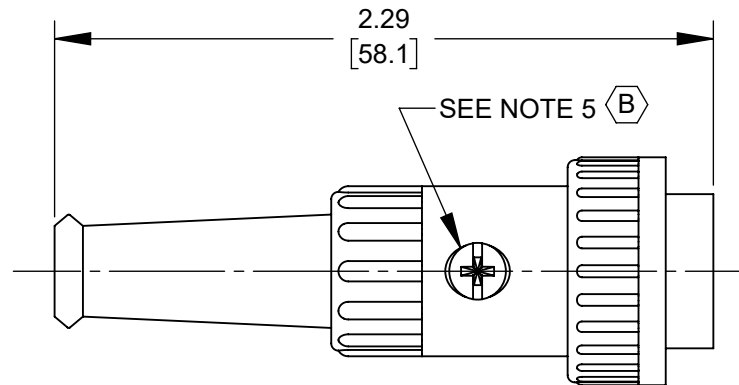


ALTERNATE DESIGN  
SCALE 1:1



NOTES:

1. SHIPPED ASSEMBLED.
2.  $\varnothing 0.04$  [1.0mm] X 0.06 [1.5mm] DEEP HOLE IN PIN FOR SOLDERING.
3. MATERIALS:  
HOUSING AND LOCKRING - ZINC ALLOY, NICKEL PLATED  
FLEX RELIEF - THERMOPLASTIC, BLACK  
INSERT - THERMOPLASTIC, BLACK  
PINS - COPPER ALLOY, TIN PLATED  
CABLE CLAMP - STEEL, NICKEL PLATED  
SCREW - STEEL, NICKEL PLATED
4. THESE PRODUCTS ARE RoHS COMPLIANT.
5. SCREW DRIVE MAY BE SLOTTED, CROSS RECESS, T8, COMBINATION SLOTTED/CROSS RECESS OR COMBINATION SLOTTED/T8.

CUSTOMER DRAWING

					<div>UNLESS OTHERWISE SPECIFIED</div> <div>1. ALL DIMENSIONS IN INCHES [mm]</div> <div>- TWO PLACE DECIMALS ±0.02 [0.5]</div> <div>- THREE PLACE DECIMALS ±0.005 [0.13]</div>	THIS DRAWING DESCRIBES A DESIGN CONSIDERED PROPRIETARY IN NATURE, DEVELOPED AND MANUFACTURED BY SWITCHCRAFT INC. AND IS RELEASED ON A CONFIDENTIAL BASIS FOR IDENTIFICATION PURPOSES ONLY.											
						SIZE	WIDTH		MULT		LBS/M		TEMPER				
						FINISH SPEC No.						MATERIAL SPEC No.					
						FIRST USED ON				SCALE 3:2		<div>Switchcraft®</div>					
B	28667	3/28/24	PC	TJK		DATE DRAWN	BY	CHKD TO		APVD TJK							
A	26000	3/3/06	TJK	TJK		24-May-13	TO	5-28-13		2-29-13		SHEET 1 OF 1					
REV	ECO NUMBER	DATE	BY	APVD	NAME						PART No. 05CL_MX, 09CL_MX 12CL_MX, 15CL_MX SERIES				REV B		
REVISIONS					DO NOT SCALE DRAWING						MALE DIN 3-8 PIN LOCKING CORD PLUG CONNECTOR, RoHS						

SolidWorks CAD File B

# Mouser Electronics

Authorized Distributor

Click to View Pricing, Inventory, Delivery & Lifecycle Information:

[Switchcraft:](#)

[05CL3MX](#) [09CL4MX](#) [05CL5MX](#)