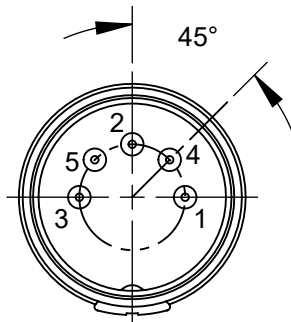
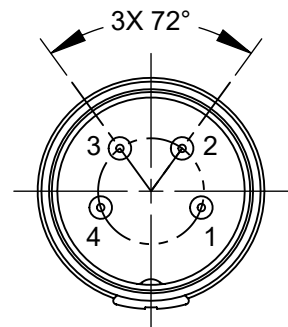


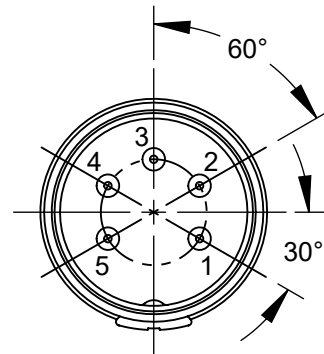
05BL3MX
3 PINS AT 180°



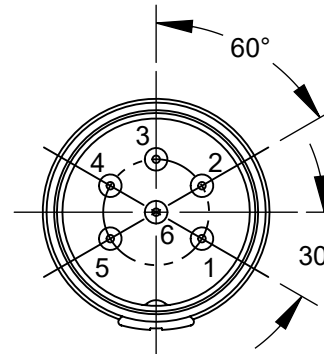
05BL5MX
5 PINS AT 180°



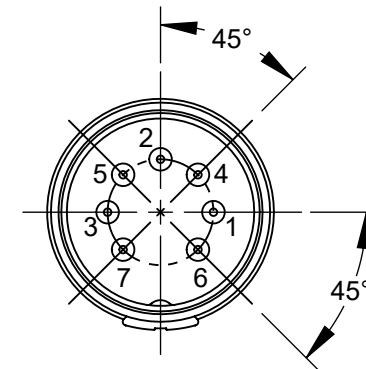
09BL4MX
4 PINS AT 216°



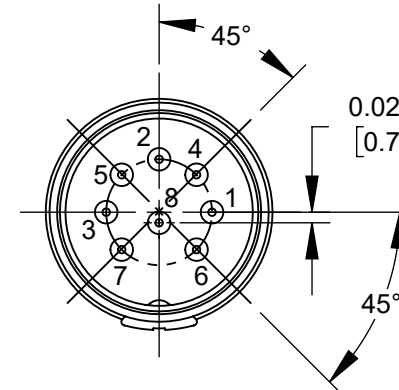
12BL5MX
5 PINS AT 240°



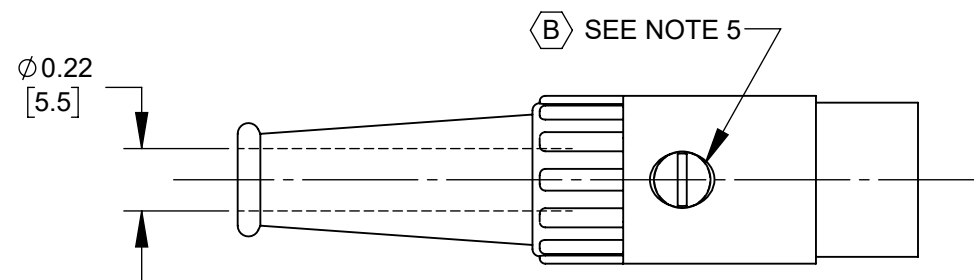
12BL6MX
6 PINS AT 240°



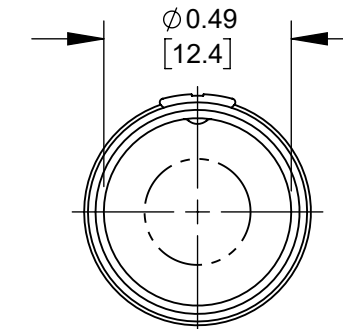
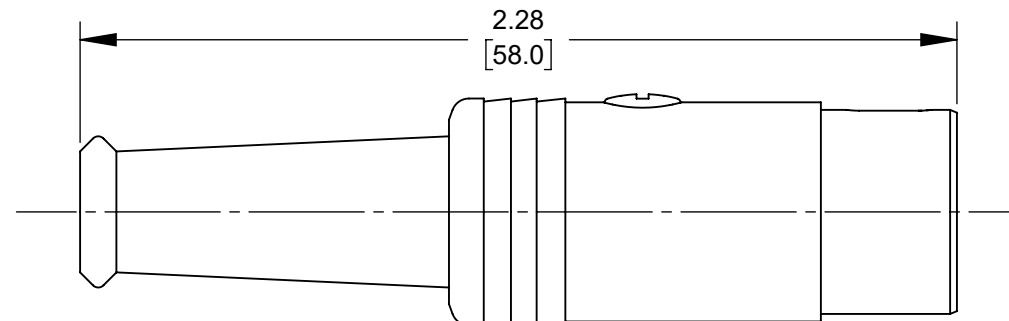
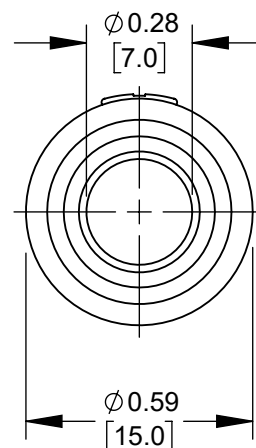
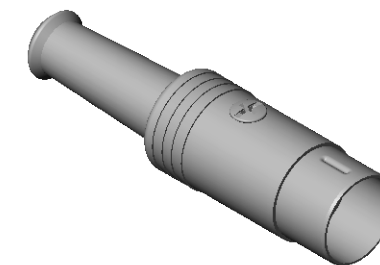
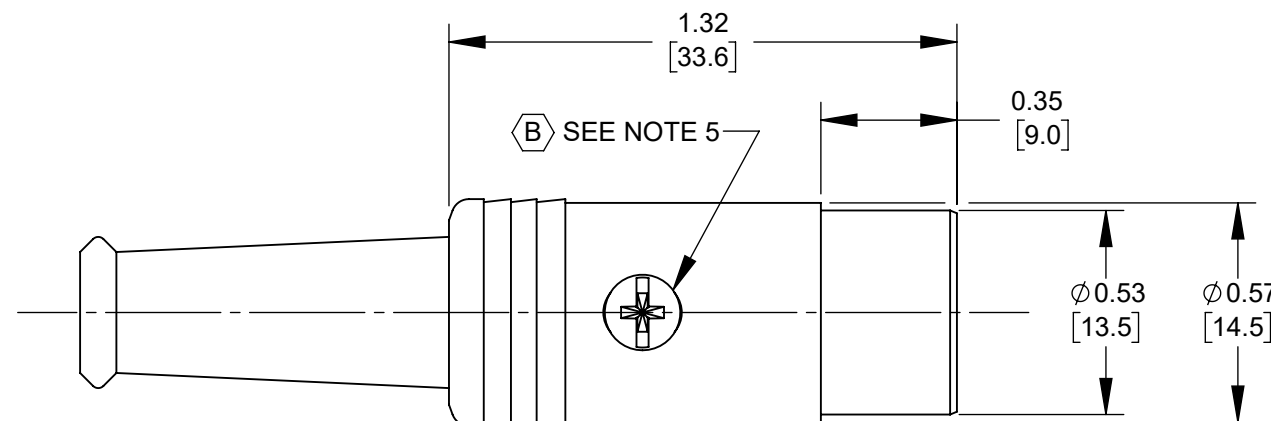
15BL7MX
7 PINS AT 270°



15BL8MX
8 PINS AT 270°



ALTERNATE DESIGN
NICKEL PLATED ZINC ALLOY HOUSING
SCALE 3:2



CUSTOMER DRAWING

NOTES:

- PARTS SHIPPED ASSEMBLED.
- Ø0.04 [1.0mm] X 0.06 [1.5mm] DEEP HOLE IN PIN FOR SOLDERING.
- MATERIALS:
HOUSING - COPPER ALLOY, NICKEL PLATED
FLEX RELIEF - THERMOPLASTIC, BLACK
INSERT - THERMOPLASTIC, BLACK
PINS - COPPER ALLOY, TIN PLATED
CABLE CLAMP - STEEL, NICKEL PLATED
SCREW - STEEL, NICKEL PLATED
- THESE PRODUCTS ARE RoHS COMPLIANT.
- (B) SCREW DRIVE MAY BE SLOTTED, CROSS RECESS, T8, COMBINATION SLOTTED/CROSS RECESS OR COMBINATION SLOTTED/T8.

					THIS DRAWING DESCRIBES A DESIGN CONSIDERED PROPRIETARY IN NATURE, DEVELOPED AND MANUFACTURED BY SWITCHCRAFT INC. AND IS RELEASED ON A CONFIDENTIAL BASIS FOR IDENTIFICATION PURPOSES ONLY.				
					SIZE	WIDTH	MULT	LBS/M	TEMPER
					FINISH SPEC No.			MATERIAL SPEC No.	
					FIRST USED ON		SCALE 2:1		Switchcraft®
					DATE DRAWN	BY	CHKD TO	APVD TJK	
					5-10-13	TO	5-10-13	5-13-13	
					NAME MALE DIN, 3-8 PIN CORD PLUG CONNECTOR, RoHS			PART No. 05BL_MX, 09BL_MX 12BL_MX, 15BL_MX SERIES	REV B
REV	ECO NUMBER	DATE	BY	APVD	DO NOT SCALE DRAWING				
REVISIONS									
B	28667	3/28/24	PC	TJK					
A	25265 & 26000	3/3/06	TJK	TJK					

Mouser Electronics

Authorized Distributor

Click to View Pricing, Inventory, Delivery & Lifecycle Information:

[Switchcraft:](#)

[12BL6M](#) [09BL4M](#) [15BL7M](#) [15BL8M](#) [12BL5M](#) [05BL5M](#) [05BL3M](#) [12BL5MX](#) [12BL6MX](#) [15BL8MX](#)