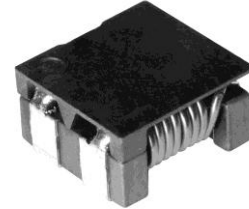
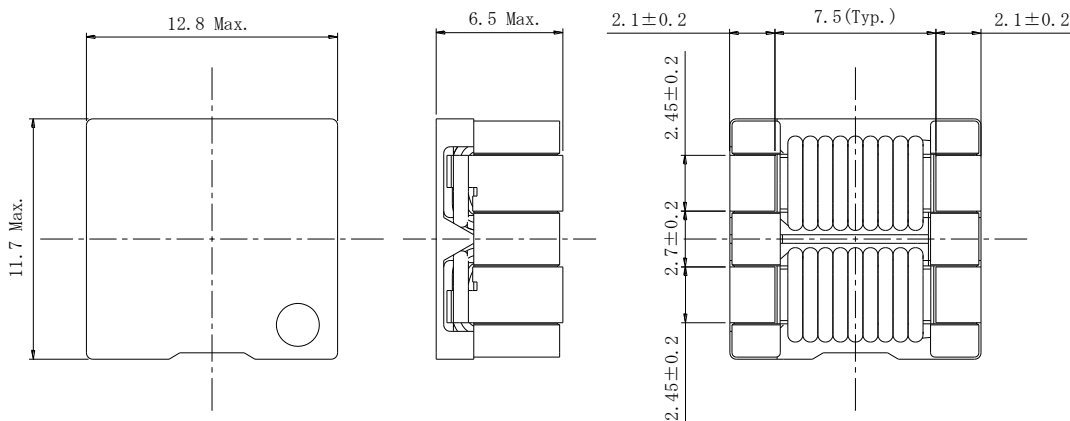
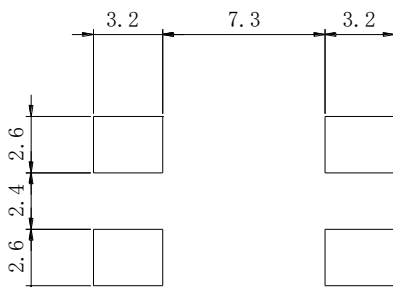
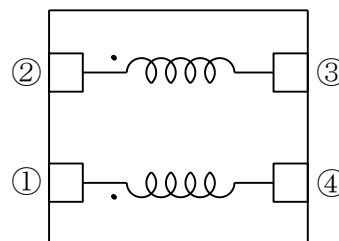


Type: CPFC11D60
◆ Product Description

- Size: 12.8×11.7mm Max.(L×W), 6.5mm Max. Height .
- Insulated withstand voltage: DC 100V
- Custom design is available.


◆ Feature

- For medical machines and automotive related applications.
- Of high reliabilities.
- RoHS Compliance

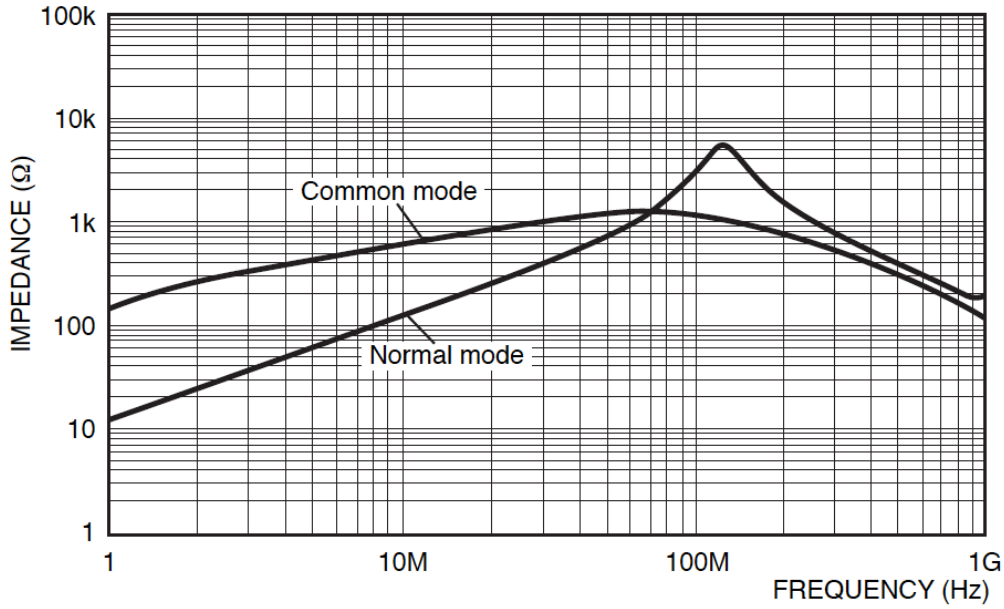
◆ Dimensions (mm)

◆ Land Pattern (mm)

◆ Schematics (Bottom)

◆ Specification

| Part Name. | Stamp | Impedance (1,2-3,4) 100MHz | D.C.R (1-4) and (2-3) | Rated Current (1-2) ※1 (3-4)short |
|------------------|-------|----------------------------------|--------------------------|---|
| CPFC11D60-100M08 | 122 | 800Ω Min | 8.0mΩ Max. | 6.0A |

※1. Rated Current: The DC current at which the temperature rise is $\Delta t=40^{\circ}\text{C}$. ($T_a=20^{\circ}\text{C}$)

Type: CPFC11D60

Impedance Characteristics / インピーダンス特性



Mouser Electronics

Authorized Distributor

Click to View Pricing, Inventory, Delivery & Lifecycle Information:

Sumida:

[CPFC11D60-100M08](#)