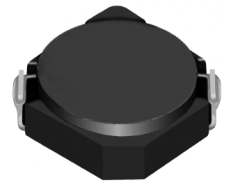
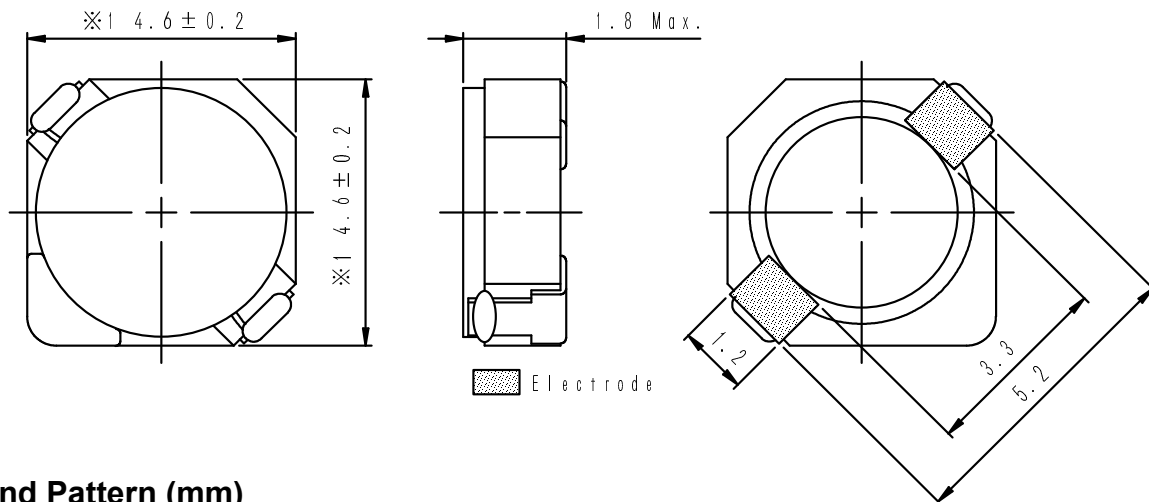
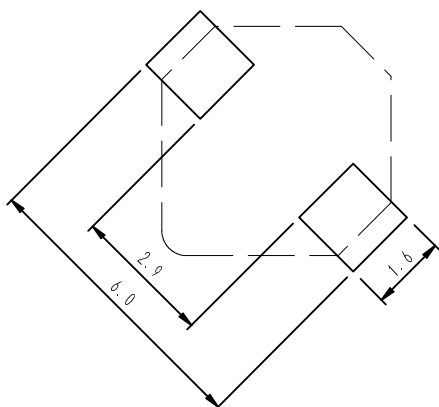


Type: CDRH4D16
◆ Product Description

- 4.8×4.8mm Max.(L×W),1.8mm Max. Height.
- Inductance range: 3.0~100 μ H.
- Rated current range: 0.29~1.75A.
- In addition to the standards versions shown here, custom inductors are also available to meet your exact requirements.


◆ Feature

- Magnetically shielded construction.
- Storage temperature range: -40°C ~+100°C.
- Operating temperature range: -40°C ~+100°C (Including coil's self temperature rise).
- Ideally used in Mobilephone,PDA,MP3,DSC/DVC,etc as DC-DC converter inductors.
- RoHS compliance.

◆ Dimensions (mm)

◆ Land Pattern (mm)


Type: CDRH4D16
◆ Specification

Part No. ※	Stamp	Inductance (μ H) 1 00kHz/1V	D.C.R.(m Ω) Max.(Typ.) (at 20°C)	Saturation Current (A) ※1	Temperature Rise Current (A) ※2
CDRH4D16NP-3R0N□	3R0	3.0 \pm 25%	53(43)	1.75	2.30
CDRH4D16NP-4R7N□	4R7	4.7 \pm 25%	75(60)	1.40	1.65
CDRH4D16NP-6R8N□	6R8	6.8 \pm 25%	110(88)	1.15	1.30
CDRH4D16NP-100M□	100	10 \pm 20%	155(125)	0.95	1.05
CDRH4D16NP-150M□	150	15 \pm 20%	235(190)	0.77	0.82
CDRH4D16NP-220M□	220	22 \pm 20%	330(265)	0.64	0.67
CDRH4D16NP-330M□	330	33 \pm 20%	490(395)	0.52	0.53
CDRH4D16NP-470M□	470	47 \pm 20%	680(550)	0.44	0.47
CDRH4D16NP-680M□	680	68 \pm 20%	980(790)	0.37	0.38
CDRH4D16NP-101M□	101	100 \pm 20%	1480(1190)	0.30	0.29

※ Description of part name

CDRH4D16NP-3R0N□

- B Box
- C Carrier Tape

※1. Saturation current: The DC current at which the inductance decreases to 65% of it's nominal value

※2. Temperature rise current: The DC current at which the temperature rise is $\Delta t=40^{\circ}\text{C}$.($T_a=20^{\circ}\text{C}$)

Mouser Electronics

Authorized Distributor

Click to View Pricing, Inventory, Delivery & Lifecycle Information:

Sumida:

[CDRH4D16NP-6R8NC](#) [CDRH4D16FBNP-100MC](#) [CDRH4D16FBNP-1R8NC](#) [CDRH4D16FBNP-8R5NC](#)
[CDRH4D16F/LDNP-2R0NC](#) [CDRH4D16FBNP-6R8NC](#) [CDRH4D16F/LDNP-4R7NC](#) [CDRH4D16F/LDNP-6R8NC](#)
[CDRH4D16FBNP-3R0NC](#) [CDRH4D16F/LDNP-100NC](#) [CDRH4D16FBNP-150MC](#) [CDRH4D16FBNP-220MC](#)
[CDRH4D16F/LDNP-150NC](#) [CDRH4D16FBNP-1R3NC](#) [CDRH4D16FBNP-2R4NC](#) [CDRH4D16F/LDNP-220NC](#)
[CDRH4D16F/LDNP-330NC](#) [CDRH4D16F/LDNP-2R6NC](#) [CDRH4D16FBNP-3R9NC](#) [CDRH4D16FB/NP-100MC](#)
[CDRH4D16NP-150MC](#) [CDRH4D16NP-330MC](#) [CDRH4D16NP-470MC](#) [CDRH4D16NP-680MC](#)