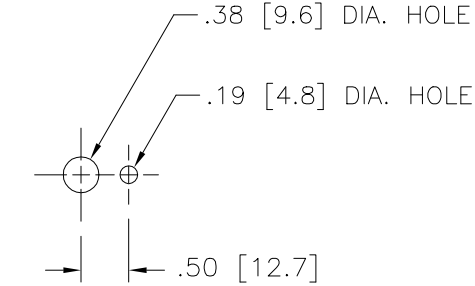


SCHEMATIC
VIEWED FROM BASE END



PANEL MTG. DETAIL

SPECIFICATIONS														
WIRING	INPUT		OUTPUT						SHAFT ROTATION TO INCREASE VOLTAGE	TERMINAL CONNECTIONS				
	VOLTS	HERTZ	VOLTS	CONSTANT CURRENT LOAD		CONSTANT IMPEDANCE LOAD		FOR INCREASING VOLTAGE AS VIEWED FROM BASE END						
				MAX. AMPS	MAX. KVA	MAX. AMPS	MAX. KVA	INPUT		JUMPER	OUTPUT			
SINGLE PHASE	120	50/60	0-120	2.5	0.30	3.2	0.38	CW	1-2	—	1-3			
		60	0-132	2.5	0.33	—	—	CCW	1-2	—	2-3			
								CW	1-4	—	1-3			
UNLESS OTHERWISE SPECIFIED, TOLERANCE IS ± DECIMALS .XX .005 HOLES .002 ANGLES 1° DRAFT 1-1/2°			UNITS IN [mm]		TITLE: SPEC. CONTROL DRAWING VARIABLE TRANSFORMER MODEL 221-B									
MATERIAL:			ALL DIMENSIONS APPLY AFTER PLATING											
The information and design disclosed herein was originated by and is the property of STACO ENERGY PRODUCTS CO., which reserves all patent, proprietary, design, manufacturing, reproduction, use and sale rights thereto, and to any article disclosed therein except to the extent rights are expressly granted to others. The foregoing does not apply to vendor proprietary parts.					DRAWN BY S.A. SMITH		DATE 1/24/02		FIRST USED ON		DO NOT SCALE DWG.			
					CHECKER SAS		DATE 1/25/02		WEIGHT APPROX.		CAGE CODE 83008		DWG. SIZE	
					ENGINEER SAS		DATE 1/25/02		SCALE 1/1		SHEET 1 OF 1		DWG. NO.	
									D		031-0155			

Mouser Electronics

Authorized Distributor

Click to View Pricing, Inventory, Delivery & Lifecycle Information:

[Staco:](#)

[221-B](#)