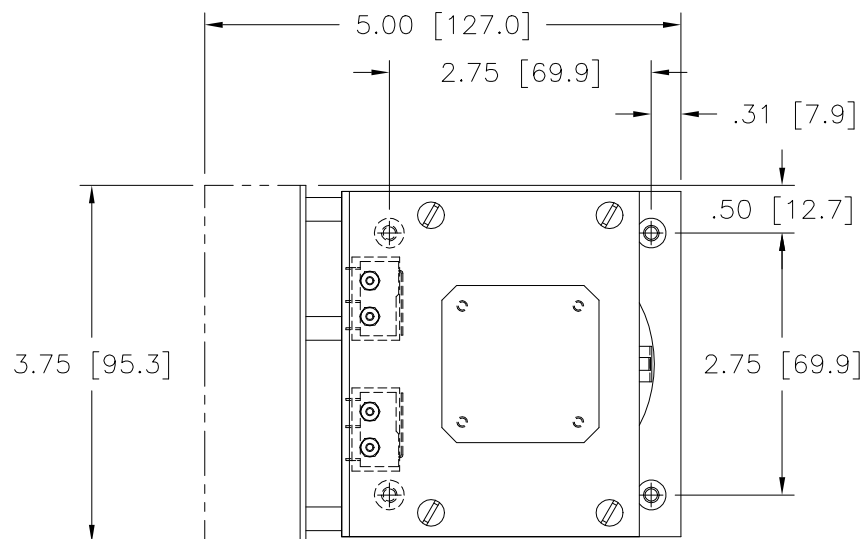
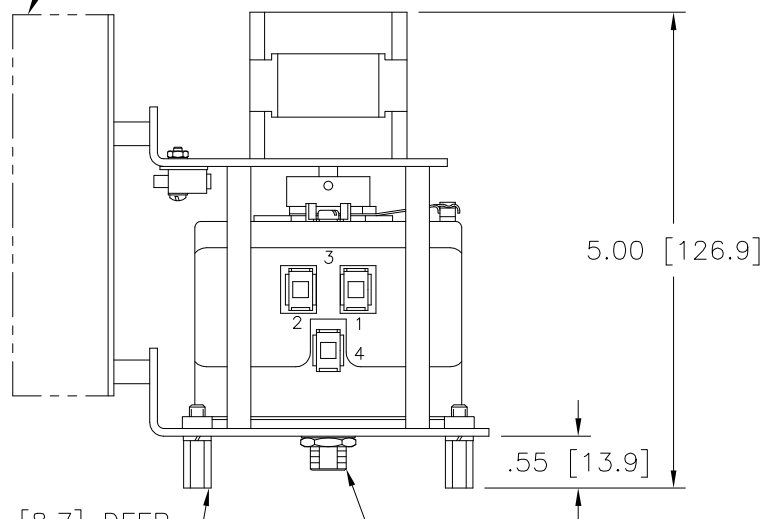


DWG. NO.	095-1942		
REVISIONS			
SYM.	E.C.N.	DATE	APVD.
A	24028	8/18/99	CLARIFIED 5VDC NOTE

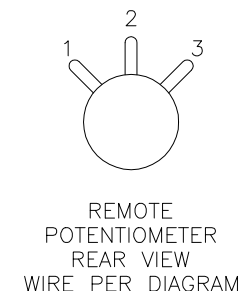
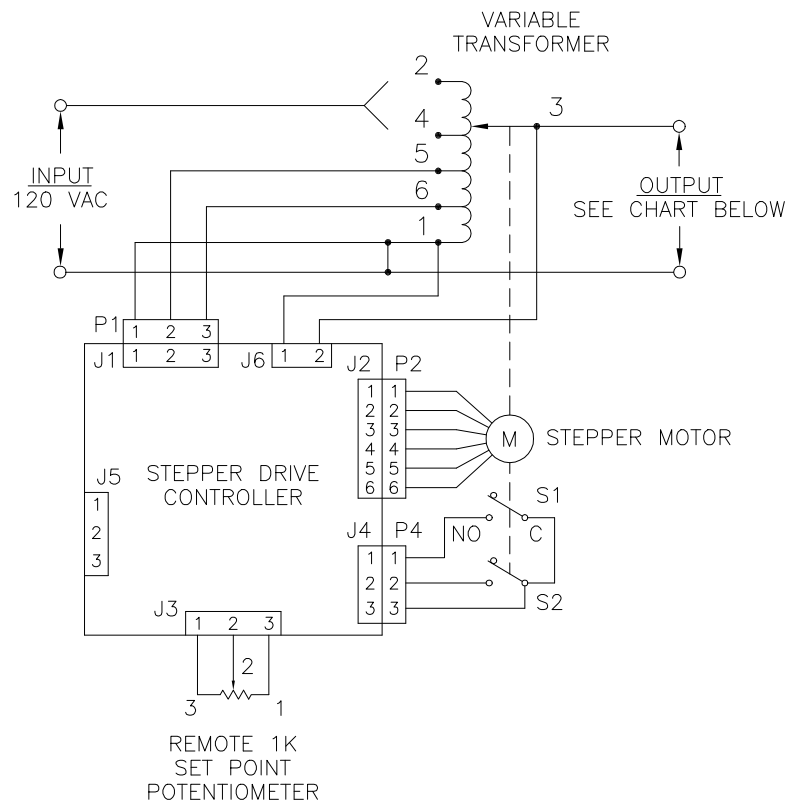


STEPPER DRIVE CONTROLLER




#8-32 X .34 [8.7] DEEP
THREADS (4) PLACES
FOR MOUNTING ON
REMOVABLE FEET OR
#8-32 THREADS ON PLATE

3/8-32 NEF-2A THREAD



SET POINT ADJUSTMENT:

THE OUTPUT SET POINT MAY BE ADJUSTED WITH THE REMOTE 1K POTENTIOMETER PROVIDED OR WITH A 0-5 VDC SIGNAL TO THE J3 CONNECTOR ON THE STEPPER DRIVE CONTROL. MAKE CONNECTIONS TO J3-2(+) & J3-3(-). A NOMINAL +5 VDC SETPOINT SUPPLY IS AVAILABLE AT J3-1 (ADJUSTABLE AT TRIMPOT R22).

SPECIFICATIONS																
WIRING	INPUT		VOLTS	OUTPUT				TERMINAL CONNECTIONS								
	VOLTS	HERTZ		CONSTANT CURRENT LOAD		CONSTANT IMPEDANCE LOAD										
				MAX. AMPS	MAX. KVA	MAX. AMPS	MAX. KVA	INPUT	OUTPUT							
SINGLE PHASE	120	50/60	0-120	3.0	0.36	3.5	0.42	1-2	1-3							
		60	0-132	3.0	0.40	-	-	1-4	1-3							
UNLESS OTHERWISE SPECIFIED, TOLERANCE IS ±			TITLE: SPEC. CONTROL DRAWING STEPPER DRIVEN VARIABLE TRANSFORMER MODEL SD291		 STACO ENERGY PRODUCTS CO. A COMPONENTS CORPORATION OF AMERICA COMPANY DAYTON, OHIO U.S.A.											
DECIMALS .XX .0003 .03 .002	HOLES	ANGLES 1°								DRAFT 1-1/2°	UNITS IN [mm]					
MATERIAL		ALL DIMENSIONS APPLY AFTER PLATING														
The information and design disclosed herein was originated by and is the property of STACO ENERGY PRODUCTS CO., which reserves all patent, proprietary, design, manufacturing, reproduction, use and sale rights thereto, and to any article disclosed therein except to the extent rights are expressly granted to others. The foregoing does not apply to vendor proprietary parts.					DRAWN BY S.A. SMITH		DATE 9/5/97		FIRST USED ON		DO NOT SCALE DWG.		CUSTOMER APPROVAL		DATE	
					CHECKER		DATE		WEIGHT APPROX.		CODE IDENT. NO. 83008		DWG. NO.		DWG. NO.	
					ENGINEER		DATE		SCALE 1 = 1		SHEET 1 OF 1		C		095-1942	



Mouser Electronics

Authorized Distributor

Click to View Pricing, Inventory, Delivery & Lifecycle Information:

Staco:

SD291