

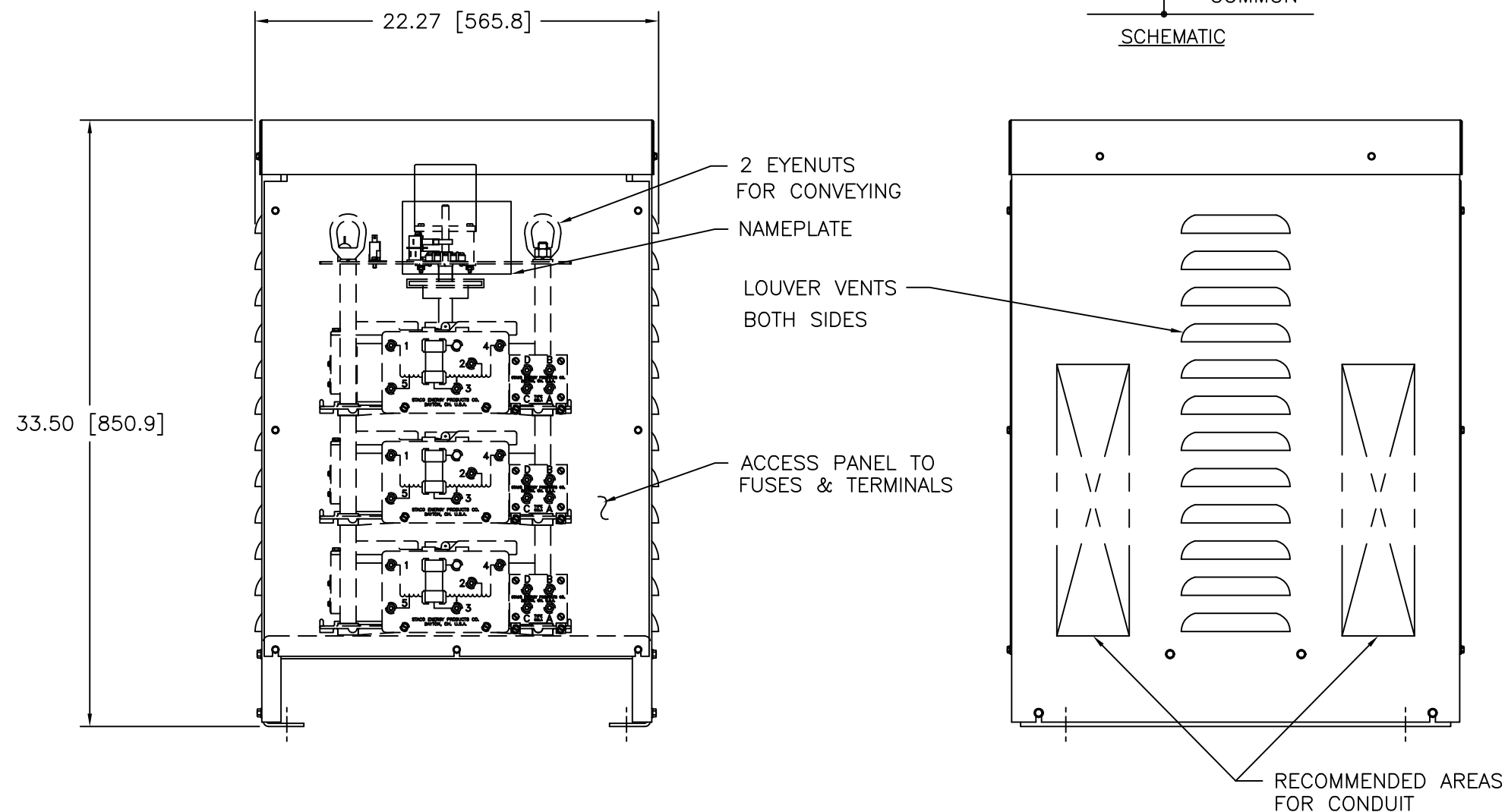
FIGURE A
MAXIMUM OUTPUT CURRENT OF ANY
DUAL INPUT VOLTAGE OR VOLTAGE DOUBLER
UNIT OPERATED AT LOWER INPUT VOLTAGE.

* MAXIMUM OUTPUT CURRENT IN OUTPUT VOLTAGE RANGE FROM 0 TO 25 PERCENT ABOVE LINE VOLTAGE. AT HIGHER OUTPUT VOLTAGES, OUTPUT CURRENT MUST BE REDUCED ACCORDING TO RATING CURVE (SEE FIGURE A).

++ MAXIMUM KVA AT MAXIMUM OUTPUT AND CORRESPONDING DE-RATED CURRENT. MAXIMUM KVA AT LOWER OUTPUT VOLTAGES MAY BE CALCULATED FROM RATING CURVE, (SEE FIGURE A).

V.D. = VOLTAGE DOUBLER.

SPEED (SECONDS)	MODEL NUMBER
5	5M6020E-3P
15	15M6020E-3P
30	30M6020E-3P
60	60M6020E-3P



SPECIFICATIONS									
WIRING	INPUT		OUTPUT			SHAFT ROTATION FOR VOLTAGE INCREASE	TERMINAL CONNECTIONS FOR INCREASING VOLTAGE AS VIEWED FROM TOP		
	VOLTS	HERTZ	VOLTS	CONSTANT CURRENT LOAD			INPUT	OUTPUT	
				MAX. AMPS	MAX. KVA				
SINGLE PHASE PARALLEL	240	50/60	0-240	105	25.2	CW	1-4	1-D	
			0-280	105	29.4	CW	1-2	1-D	
	120	50/60	0-280	105 * V.D.	12.6 ++	CW	1-5	1-D	


UNLESS OTHERWISE SPECIFIED, TOLERANCE IS ±

DECIMALS	HOLES	ANGLES	DRAFT
.XX .0000 .12	.0000 .03	1°	1-1/2°
.0001 .005			

MATERIAL:

TITLE:

SPECIFICATION CONTROL DRAWING
MOTORIZED VARIABLE TRANSFORMER
M6020E-3P



STACO
ENERGY PRODUCTS CO.
DAYTON, OHIO U.S.A.

ALL DIMENSIONS
APPLY AFTER
PLAYING

DRAWN BY A.ARAGON	DATE 3/17/95	FIRST USED ON M6020E-3Y	DO NOT SCALE DWG.
CHECKER	DATE	WEIGHT APPROX.	CODE IDENT. NO. 83008
ENGINEER	DATE	SCALE 25=1	SHEET 1 OF 1

The information and design disclosed herein was originated by and is the property of STACO ENERGY PRODUCTS CO., which reserves all patent, proprietary, design, manufacturing, reproduction, use and sale rights thereto, and to any article disclosed therein except to the extent rights are expressly granted to others. The foregoing does not apply to vendor proprietary parts.

CUSTOMER APPROVAL

DATE

DWG. NO. D 032-7685

Mouser Electronics

Authorized Distributor

Click to View Pricing, Inventory, Delivery & Lifecycle Information:

Staco:

M6020E-3P