

DWG. NO. D	032-7616		
REVISIONS			
SYM.	E.C.N.	DATE	APVD.
A	23385	4/26/97	
	REVISED & UPDATED		
B	23396	5/12/97	
	REVISED & UPDATED		
C	24431	12/21/00	
	REVISED & UPDATED		
D	24955	11/20/02	
	NEW MOTOR		

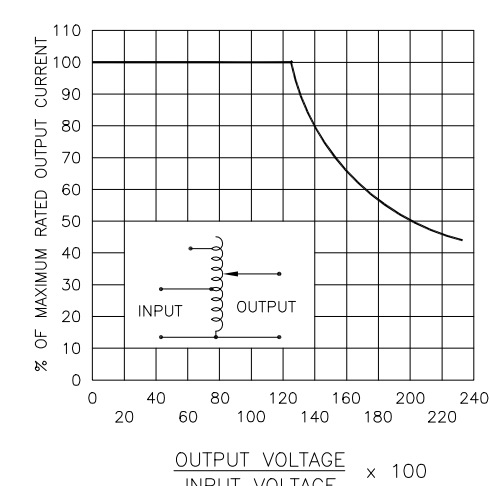
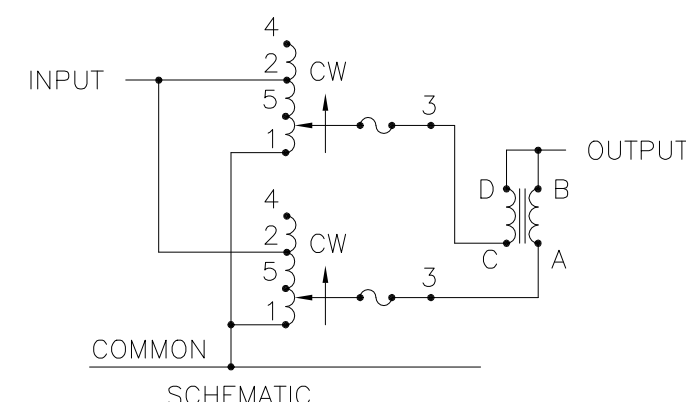
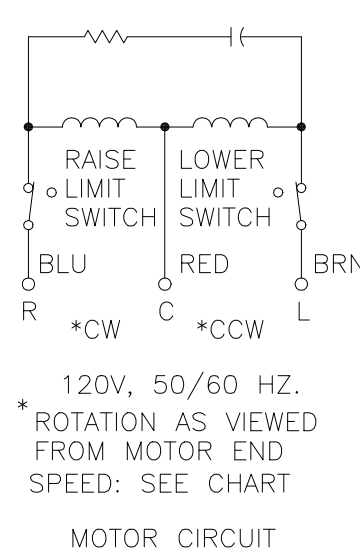


FIGURE A
MAXIMUM OUTPUT CURRENT OF ANY
DUAL INPUT VOLTAGE OR VOLTAGE DOUBLER
UNIT OPERATED AT LOWER INPUT VOLTAGE.



* VOLTAGE DOUBLER
MAXIMUM OUTPUT CURRENT IN OUTPUT VOLTAGE RANGE FROM 0 TO 25% ABOVE LINE VOLTAGE. AT HIGHER OUTPUT VOLTAGES, OUTPUT CURRENT MUST BE REDUCED ACCORDING TO RATING CURVE, FIGURE A.
‡ MAXIMUM KVA AT MAXIMUM OUTPUT AND CORRESPONDING DE-RATED CURRENT. MAXIMUM KVA AT LOWER OUTPUT VOLTAGES MAY BE CALCULATED FROM RATING CURVE, FIGURE A.

SPECIFICATIONS									
WIRING	INPUT		OUTPUT			SHAFT ROTATION FOR INCREASE VOLTAGE	TERMINAL CONNECTIONS		
	VOLTS	HERTZ	VOLTS	MAX. AMPS	MAX. KVA		FOR INCREASING VOLTAGE AS VIEWED FROM ROTOR END		
							INPUT		OUTPUT
SINGLE PHASE	240	50/60	0—240	70	16.8	CW	1—4		1—B
			0—280	70	19.6	CW	1—2		1—B
PARALLEL	120	50/60	0—280	70—30 [*] #	8.4 [‡]	CW	1—5		1—B

SPEED (SECONDS)	MODEL NUMBER	UNLESS OTHERWISE SPECIFIED, TOLERANCE IS ± DECIMALS .XX .005 Holes .002 ANGLES 1° DRAFT 1-1/2° UNITS IN [mm]	TITLE: SPEC. CONTROL DRAWING MOTORIZED VARIABLE XFMR. TYPE: M6020-2P	STACO ENERGY PRODUCTS CO. A Components Corporation of Ametec Company 301 Glendale Boulevard Dayton, Ohio 45423 USA
15	15M6020-2P	MATERIAL:	DRAWN BY: TIM RAU DATE: 1/26/96 FIRST USED ON: DO NOT SCALE DWG.	
30	30M6020-2P	The information and design disclosed herein was originated by and is the property of STACO ENERGY PRODUCTS CO., which reserves all patent, proprietary, design, manufacturing, reproduction, use and sale rights thereto, and to any article disclosed therein except to the extent rights are expressly granted to others. The foregoing does not apply to vendor proprietary parts.	CHECKER: DATE: WEIGHT APPROX. 169 LBS CAGE CODE 83008	DWG. NO. 032-7616
60	60M6020-2P		ENGINEER: DATE: SCALE .5=1 SHEET 1 OF 2	

Mouser Electronics

Authorized Distributor

Click to View Pricing, Inventory, Delivery & Lifecycle Information:

Staco:

M6020-2P