

DWG. NO.	031-7734		
REVISIONS			
SYM.	E.C.N.	DATE	APVD.
A	23526	9/18/97	
	REVISED & REDRAWN		
B	24073	9/20/99	
	REVISED DIM "A"		
C	24951	10/17/02	
	NEW MOTOR		
D	25067	2/27/03	
	DELETED BRACKETS		

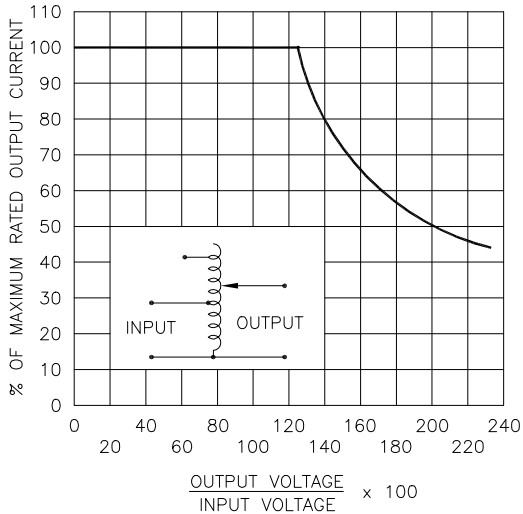
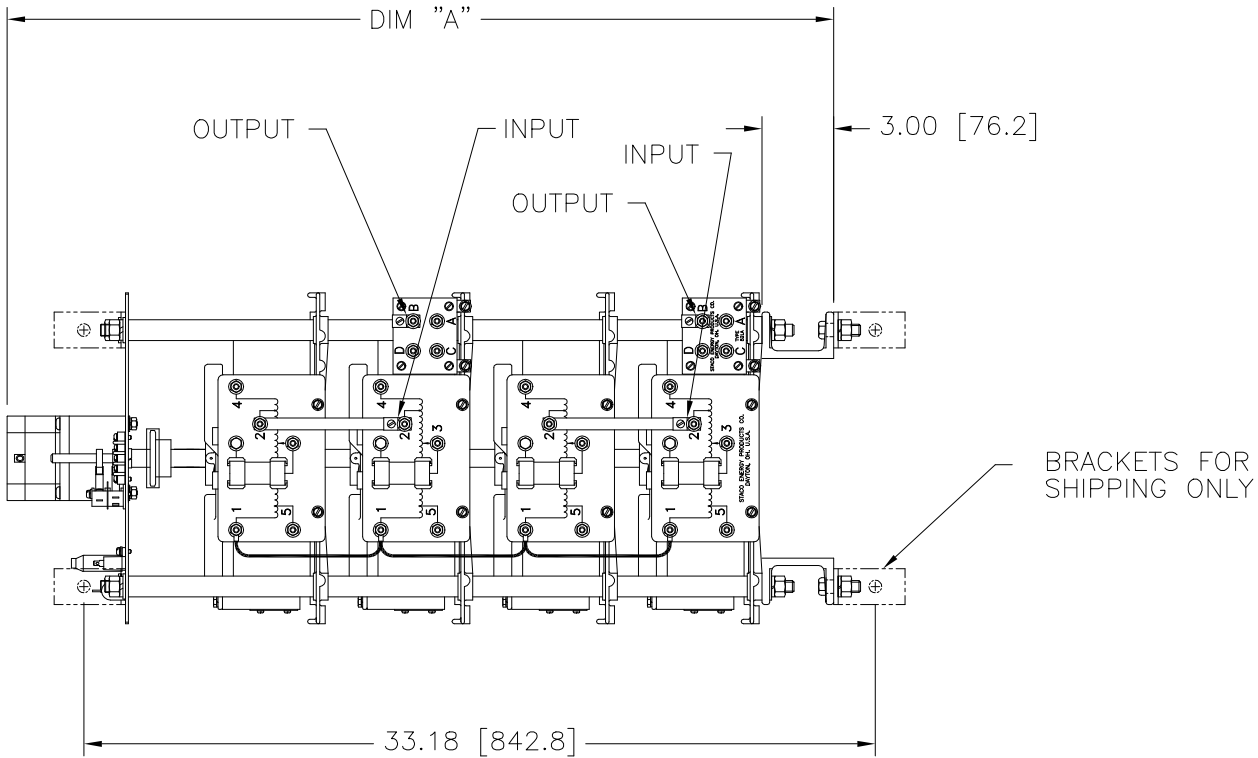
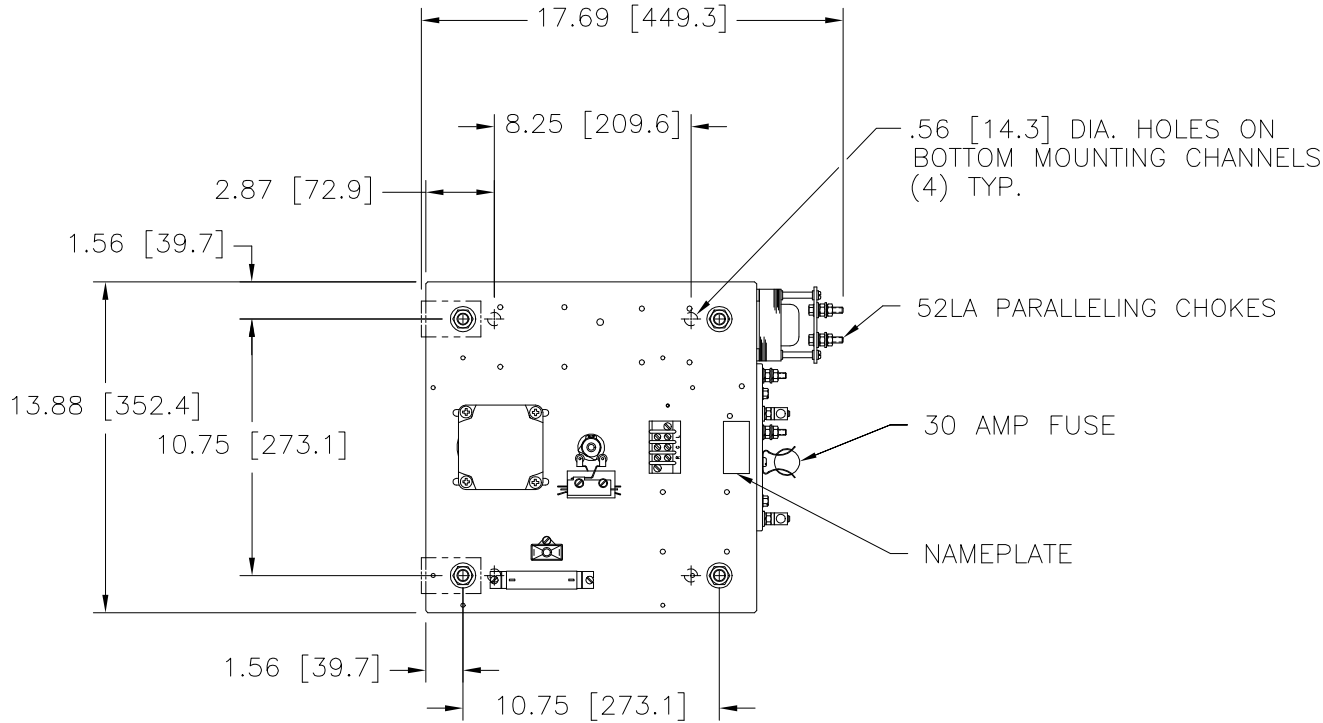
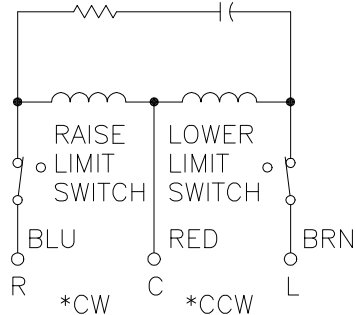
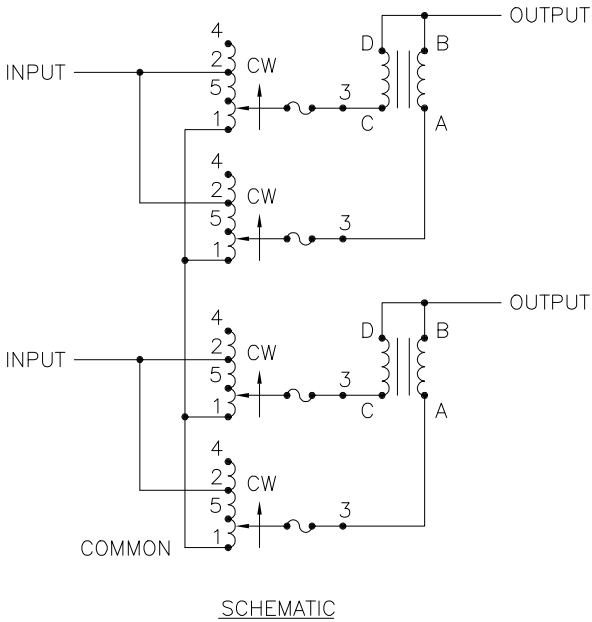


FIGURE A
MAXIMUM OUTPUT CURRENT OF ANY DUAL INPUT VOLTAGE OR VOLTAGE DOUBLER UNIT OPERATED AT LOWER INPUT VOLTAGE.



- # MAXIMUM OUTPUT CURRENT IN OUTPUT VOLTAGE RANGE FROM 0 TO 25 % ABOVE LINE VOLTAGE. AT HIGHER OUTPUT VOLTAGES, THE OUTPUT CURRENT MUST BE REDUCED ACCORDING TO THE RATING DERATING CURVE, FIGURE A.
- + MAXIMUM KVA AT MAXIMUM OUTPUT VOLTAGE AND CORRESPONDING DERATED OUTPUT CURRENT. MAXIMUM KVA FOR LOWER VOLTAGES MAY BE CALCULATED FROM RATING CURVE, FIGURE A.

V.D. = VOLTAGE DOUBLER.

SPECIFICATIONS								
WIRING	INPUT		OUTPUT			SHAFT ROTATION FOR VOLTAGE INCREASE	TERMINAL CONNECTIONS FOR INCREASING VOLTAGE AS VIEWED FROM TOP	
	VOLTS	HERTZ	VOLTS	CONSTANT CURRENT LOAD			INPUT	OUTPUT
SINGLE PHASE SERIES PARALLEL	480	50/60	0-480	56	26.9	CW	4-4	B-B
			0-560	56	31.4	CW	2-2	B-B
	240	50/60	0-560	56#24 V.D.	13.5 +	CW	5-5	B-B
SPEED (SECONDS)			MODEL NUMBER		DIM "A"		TITLE: SPEC. CONTROL DRAWING MOTORIZED VARIABLE XFMR. TYPE: M5021-4PS	
5			5M5021E-4PS		33.43 [849.1]		DRAWN BY: TIM RAU DATE: 9/10/97	
15			15M5021E-4PS		34.64 [879.9]		CHECKER: DATE: WEIGHT APPROX. CAGE CODE 83008	
30			30M5021E-4PS		34.64 [879.9]		ENGINEER: DATE: SCALE .25=1 SHEET 1 OF 1	
60			60M5021E-4PS		34.64 [879.9]		DWG. NO. 031-7734	



Mouser Electronics

Authorized Distributor

Click to View Pricing, Inventory, Delivery & Lifecycle Information:

Staco:

M5021-4PS