

DWG. NO.	031-7680		
REVISIONS			
SYM.	E.C.N.	DATE	APVD.
A	24877	7/1/02	ADDED LUG

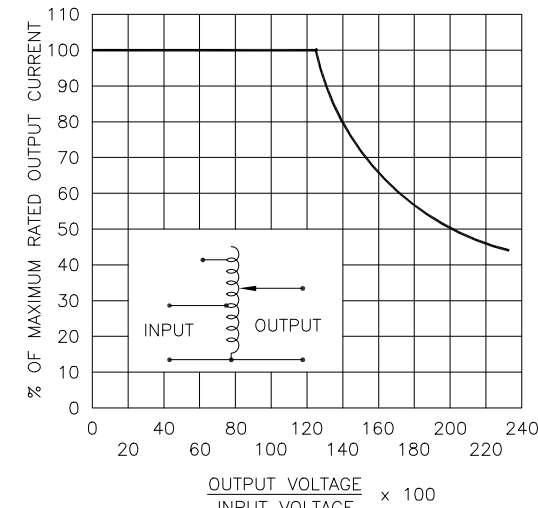
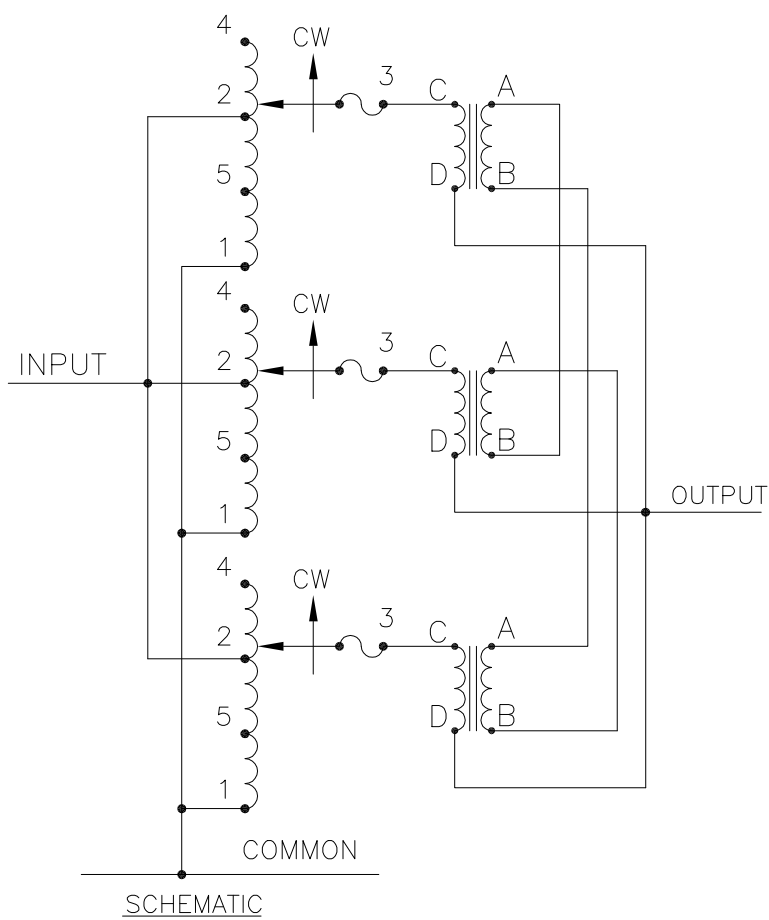
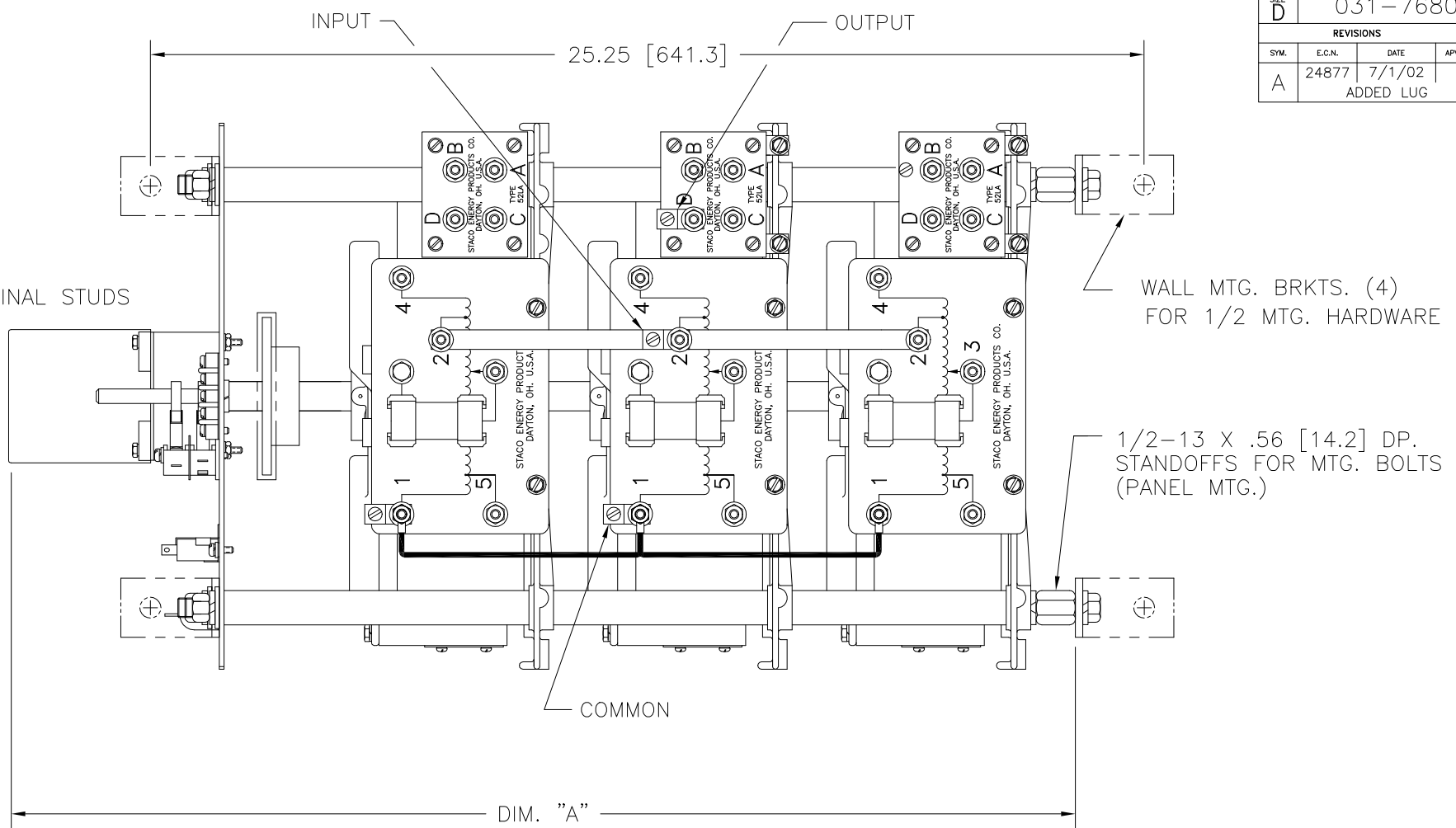
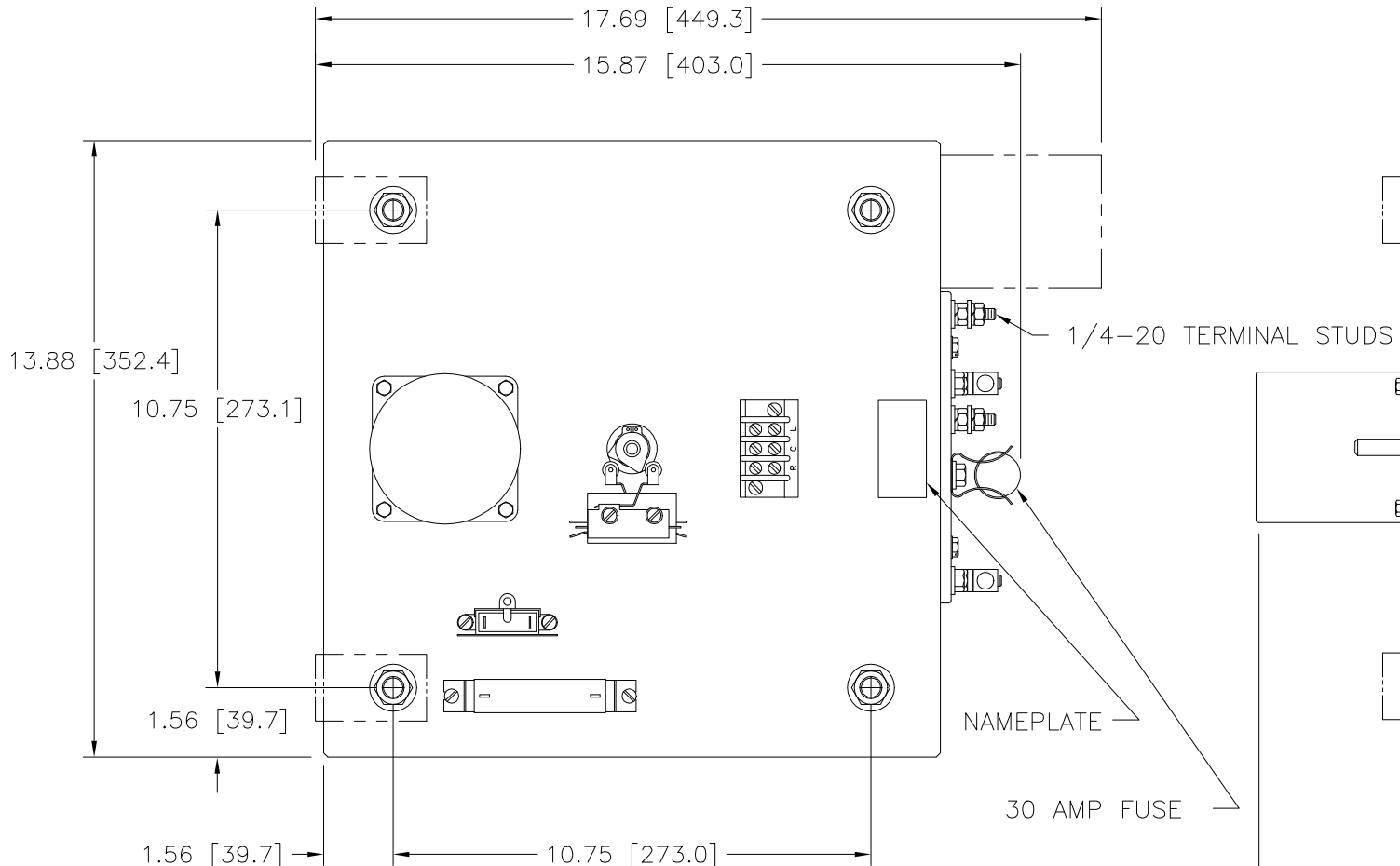
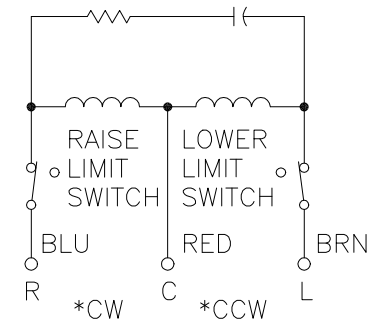


FIGURE A
MAXIMUM OUTPUT CURRENT OF ANY
DUAL INPUT VOLTAGE OR VOLTAGE DOUBLER
UNIT OPERATED AT LOWER INPUT VOLTAGE.

* MAXIMUM OUTPUT CURRENT IN OUTPUT VOLTAGE RANGE FROM 0 TO 25% ABOVE LINE VOLTAGE. AT HIGHER OUTPUT VOLTAGES, OUTPUT CURRENT MUST BE REDUCED ACCORDING TO RATING CURVE, FIGURE A.

± MAXIMUM KVA AT MAXIMUM OUTPUT AND CORRESPONDING DE-RATED CURRENT. MAXIMUM KVA AT LOWER OUTPUT VOLTAGES MAY BE CALCULATED FROM RATING CURVE, FIGURE A.

V.D. = VOLTAGE DOUBLER.



120V, 50/60 HZ.
* ROTATION AS VIEWED
FROM MOTOR END
SPEED: SEE CHART

MOTOR CIRCUIT

SPEED (SECONDS)	MODEL NUMBER	DIM "A"
5	5M5021-3P	25.56 [649.2]
15	15M5021-3P	27.38 [695.4]
30	30M5021-3P	27.38 [695.4]
60	60M5021-3P	27.38 [695.4]

SPECIFICATIONS								
WIRING	INPUT		OUTPUT			SHAFT ROTATION FOR VOLTAGE INCREASE	TERMINAL CONNECTIONS FOR INCREASING VOLTAGE AS VIEWED FROM TOP	
	VOLTS	HERTZ	VOLTS	MAX. AMPS	MAX. KVA		INPUT	OUTPUT
SINGLE PHASE PARALLEL	240	50/60	0-240	84	20.2	CW	1-4	1-D
			0-280	84	23.5	CW	1-2	1-D
	120	50/60	0-280	84* V.D.	10.2 ±	CW	1-5	1-D
UNLESS OTHERWISE SPECIFIED, TOLERANCE IS ±			TITLE: SPEC. CONTROL DRAWING			STACO ENERGY PRODUCTS CO. A Components Corporation of Ametec Company 305 Glendale Boulevard Dayton, Ohio 45423 USA		
DECIMALS XX .0000-12	HOLES XX .0000-12	ANGLES XX .0000-12	DRAFT XX 1-1/2°	UNITS IN [mm]	FIRST USED ON			
MATERIAL:			TYPE: M5021-3P			DRAWN BY TIM RAU		
The information and design disclosed herein was originated by and is the property of STACO ENERGY PRODUCTS CO., which reserves all patent, proprietary, design, manufacturing, reproduction, use and sale rights thereto, and to any article disclosed therein except to the extent rights are expressly granted to others. The foregoing does not apply to vendor proprietary parts.			DATE 3/11/98			DO NOT SCALE DWG.		
CHECKER			DATE			CAGE CODE 83008		
ENGINEER			DATE			WEIGHT APPROX. 237 LBS.		
			SCALE .5=1			SHEET 1 OF 1		
						DWG. NO. 031-7680		

Mouser Electronics

Authorized Distributor

Click to View Pricing, Inventory, Delivery & Lifecycle Information:

Staco:

M5021-3P