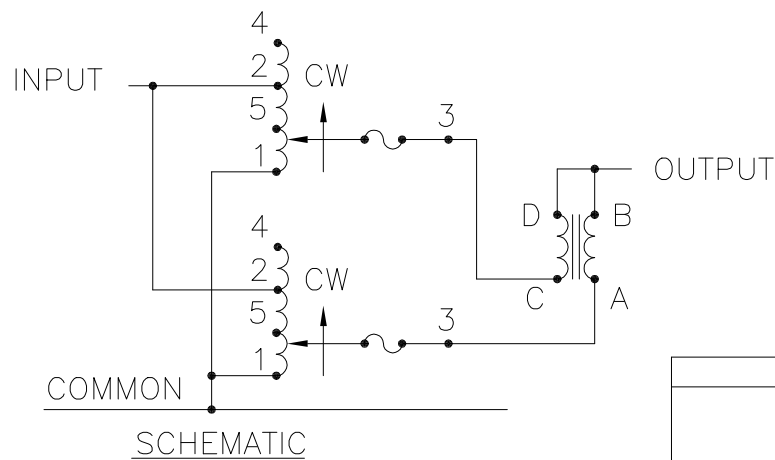
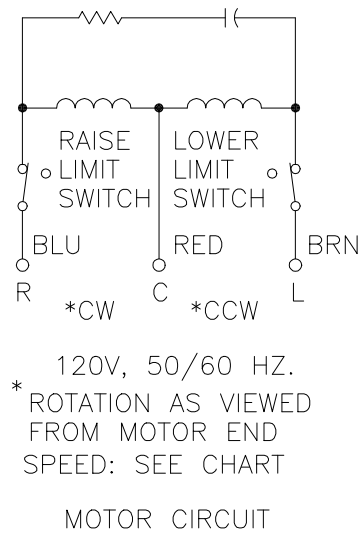
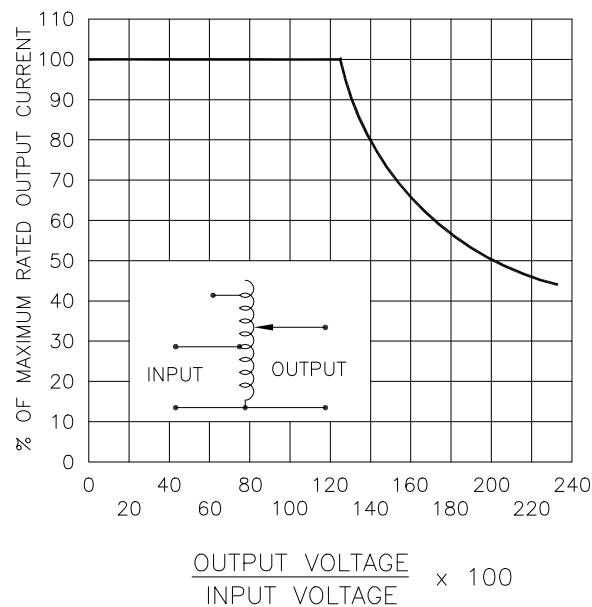


DWG. SIZE D	DWG. NO. 031-7616		
REVISIONS			
SYM.	E.C.N.	DATE	APVD.
A	23385	5/2/97	
	REVISED & UPDATED		
B	23396	5/12/97	
	REVISED & UPDATED		
C	24011	07/12/99	
	REVISED & UPDATED		
D	24955	11/19/02	
	NEW MOTOR		



SPEED (SECONDS)	MODEL NUMBER
15	15M5021-2P
30	30M5021-2P
60	60M5021-2P

SPECIFICATIONS									
WIRING	INPUT		OUTPUT			SHAFT ROTATION FOR INCREASE VOLTAGE	TERMINAL CONNECTIONS		
	VOLTS	HERTZ	VOLTS	MAX. AMPS	MAX. KVA		FOR INCREASING VOLTAGE AS VIEWED FROM ROTOR END		
SINGLE PHASE PARALLEL	240	50/60	0-240	56	13.4	CW	1-4		1-B
			0-280	56	15.7	CW	1-2		1-B
	120	50/60	0-280	* 56-24# V.D.	6.8±	CW	1-5		1-B
UNLESS OTHERWISE SPECIFIED, TOLERANCE IS ± DECIMALS .XX .04± .12 .002 HOLES .12 .002 ANGLES 1° DRAFT 1-1/2°				UNITS IN [mm]		TITLE: SPEC. CONTROL DRAWING VARIABLE TRANSFORMER TYPE: M5021-2P			
MATERIAL:				ALL DIMENSIONS APPLY AFTER PLATING		DRAWN BY: TIM RAU DATE: 4/24/97 FIRST USED ON: DO NOT SCALE DWG.			
The information and design disclosed herein was originated by and is the property of STACO ENERGY PRODUCTS CO., which reserves all patent, proprietary, design, manufacturing, reproduction, use and sale rights thereto, and to any article disclosed therein except to the extent rights are expressly granted to others. The foregoing does not apply to vendor proprietary parts.				CHECKER: DATE: WEIGHT APPROX. 157 LBS SCALE .5=1		CAGE CODE 83008 SHEET 1 OF 1			
						DWG. NO. 031-7616			



# MAXIMUM OUTPUT CURRENT IN OUTPUT VOLTAGE RANGE FROM 0 TO 25% ABOVE LINE VOLTAGE. AT HIGHER OUTPUT VOLTAGES, OUTPUT CURRENT MUST BE REDUCED ACCORDING TO RATING CURVE, FIGURE A.

++ MAXIMUM KVA AT MAXIMUM OUTPUT AND CORRESPONDING DE-RATED CURRENT. MAXIMUM KVA AT LOWER OUTPUT VOLTAGES MAY BE CALCULATED FROM RATING CURVE, FIGURE A.

V.D. = VOLTAGE DOUBLER.

# Mouser Electronics

Authorized Distributor

Click to View Pricing, Inventory, Delivery & Lifecycle Information:

Staco:

M5021-2P