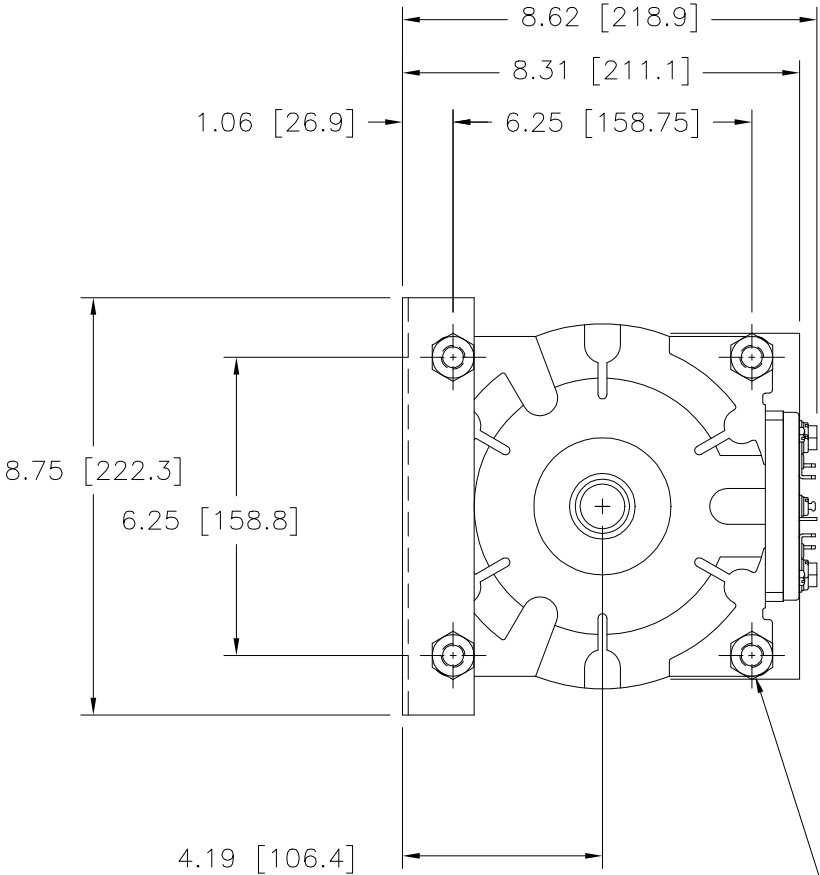
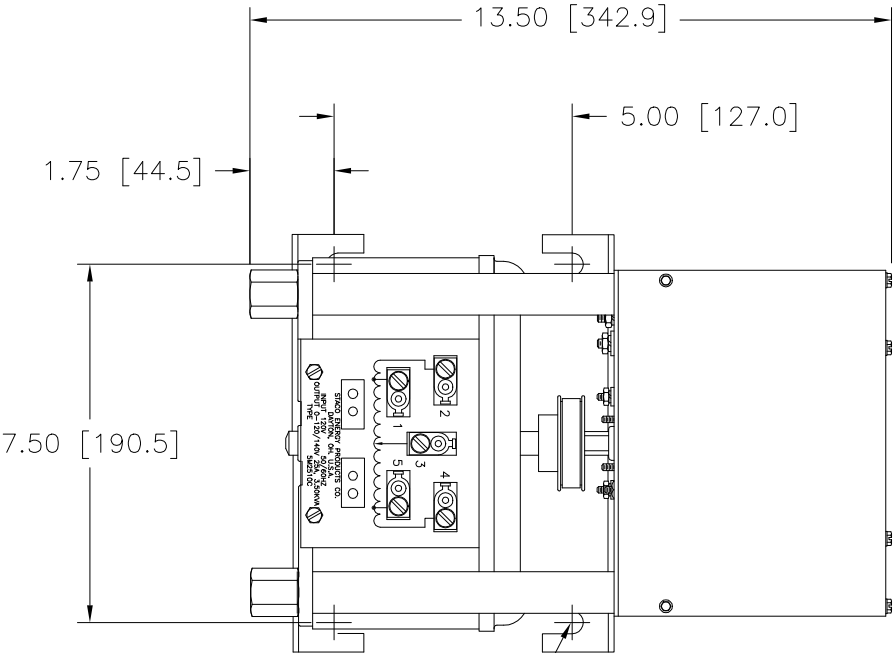


DWG. SIZE D	DWG. NO. 031-5110		
REVISIONS			
SYM.	E.C.N.	DATE	APVD.
A	24732	1/18/02	
CHART SPEEDS			

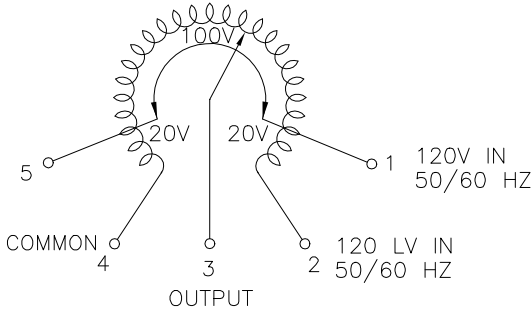


STANDOFFS TAPPED
1/2-13 X .50 (12.7)
DEEP FOR MTG. BOLTS
(4) PLACES

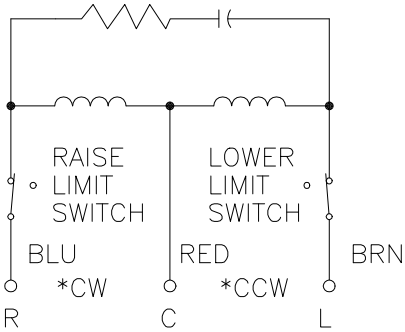


.41 [10.3] WIDE MOUNTING SLOTS
(4) PLACES

+ MOTOR DRIVEN UNITS USE TERMINAL CONNECTORS FOR CCW
INCREASING VOLTAGE, AS VIEWED FROM THE BASE END.



SCHEMATIC
VIEW FROM BASE END



MOTOR CIRCUIT
120V 50/60 HZ.
MOTOR SPEED: SEE CHART
* ROTATION AS VIEWED
FROM MOTOR END

SPEED (SECONDS)	MODEL NUMBER
5	5M2510C
15	15M2510C
30	30M2510C
60	60M2510C

SPECIFICATIONS												
WIRING	INPUT		OUTPUT				SHAFT ROTATION TO INCREASE VOLTAGE	TERMINAL CONNECTIONS				
	VOLTS	HERTZ	VOLTS	CONSTANT CURRENT LOAD		CONSTANT IMPEDANCE LOAD		FOR INCREASING VOLTAGE AS VIEWED FROM BASE END +				
				MAX. AMPS	MAX. KVA	MAX. AMPS		MAX. KVA	INPUT	JUMPER	OUTPUT	
SINGLE PHASE	120	50/60	0-120	25	3.00	30	3.6	CW	2-4	——	4-3	
									CCW	2-4	——	2-3
			0-140	25	3.50	——	——		CW	1-4	——	4-3
									CCW	2-5	——	2-3
UNLESS OTHERWISE SPECIFIED, TOLERANCE IS ±			UNITS		TITLE: SPEC. CONTROL DRAWING VARIABLE TRANSFORMER TYPE: M2510C							
DECIMALS	Holes	ANGLES	DRAFT	IN [mm]								
.XX .010	.002	1°	1-1/2°									
MATERIAL:			ALL DIMENSIONS APPLY AFTER PLATING		DRAWN BY TIM RAU							
The information and design disclosed herein was originated by and is the property of STACO ENERGY PRODUCTS CO., which reserves all patent, proprietary, design, manufacturing, reproduction, use and sale rights thereto, and to any article disclosed therein except to the extent rights are expressly granted to others. The foregoing does not apply to vendor proprietary parts.												
CHECKER			DATE			FIRST USED ON			DO NOT SCALE DWG.			
ENGINEER			DATE			WEIGHT APPROX.			CAGE CODE 83008			
						SCALE			SHEET 1 OF 1			
									DWG. SIZE			
									DWG. NO.			



Mouser Electronics

Authorized Distributor

Click to View Pricing, Inventory, Delivery & Lifecycle Information:

Staco:

M2510C