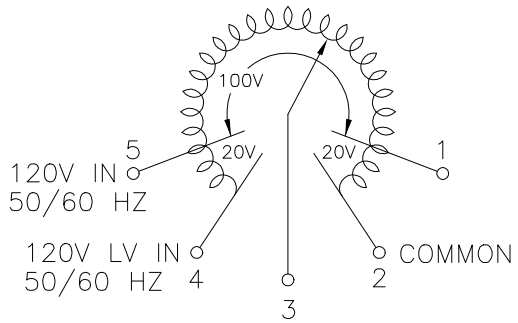
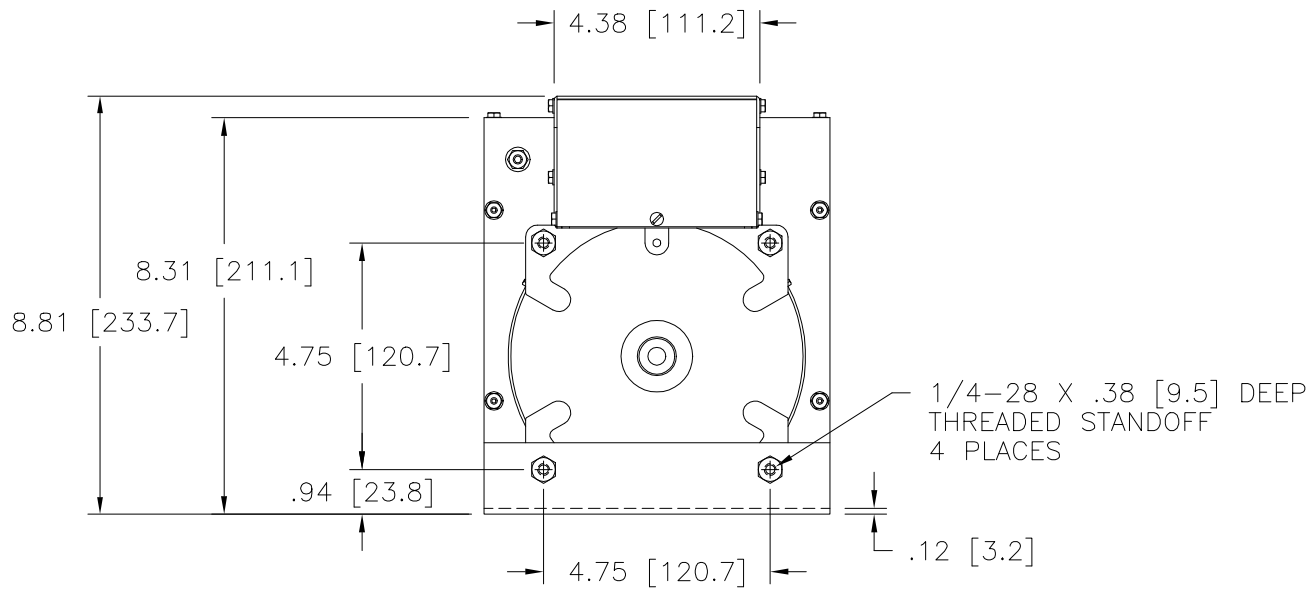


MOTOR CIRCUIT  
120V, 50/60 HZ  
\* ROTATION AS VIEWED FROM MOTOR END  
MOTOR SPEED: SEE CHART




COIL SCHEMATIC  
AS VIEWED FROM BASE END  
FUSE RECOMMENDED BUT NOT SUPPLIED

+ MOTOR DRIVEN UNITS USE TERMINAL CONNECTIONS FOR CCW INCREASING VOLTAGE, AS VIEWED FROM THE BASE END.



SPEED (SECONDS)	MODEL NUMBER
5	5M1510CT
15	15M1510CT
30	30M1510CT
60	60M1510CT

SPECIFICATIONS												
WIRING	INPUT		OUTPUT				SHAFT ROTATION TO INCREASE VOLTAGE	TERMINAL CONNECTIONS				
	VOLTS	HERTZ	VOLTS	CONSTANT CURRENT LOAD		CONSTANT IMPEDANCE LOAD		FOR INCREASING VOLTAGE AS VIEWED FROM BASE END +				
				MAX. AMPS	MAX. KVA	MAX. AMPS		MAX. KVA	INPUT	JUMPER	OUTPUT	
SINGLE PHASE	120	50/60	0-120	15	1.80	20	2.40	CW	2-4	——	4-3	
									CCW	2-4	——	2-3
			0-140	15	2.10	——	——	CW	1-4	——	4-3	
									CCW	5-2	——	2-3
UNLESS OTHERWISE SPECIFIED, TOLERANCE IS ±												
DECIMALS			HOLES		ANGLES		DRAFT		UNITS			
.XX .0005 .06			.0002 .01		1°		1-1/2°		IN [mm]			
.XXX .005												
MATERIAL :			ALL DIMENSIONS APPLY AFTER PLATING		TITLE: SPEC. CONTROL DRAWING VARIABLE TRANSFORMER MODEL: M1510CT							
												
A COMPONENTS CORPORATION OF AMERICA COMPANY DAYTON, OHIO U.S.A.												
The information and design disclosed herein was originated by and is the property of STACO ENERGY PRODUCTS CO., which reserves all patent, proprietary, design, manufacturing, reproduction, use and sale rights thereto, and to any article disclosed therein except to the extent rights are expressly granted to others. The foregoing does not apply to vendor proprietary parts.				DRAWN BY		DATE		FIRST USED ON		DO NOT SCALE DWG.		
				TIM RAU		9/28/98		M1510CT				
				CHECKER		DATE		WEIGHT APPROX.		CODE IDENT. NO.		
								26 LBS				
				ENGINEER		DATE		SCALE		SHEET 1 OF 1		
								.50=1		D 031-3801		



# Mouser Electronics

Authorized Distributor

Click to View Pricing, Inventory, Delivery & Lifecycle Information:

Staco:

M1510CT