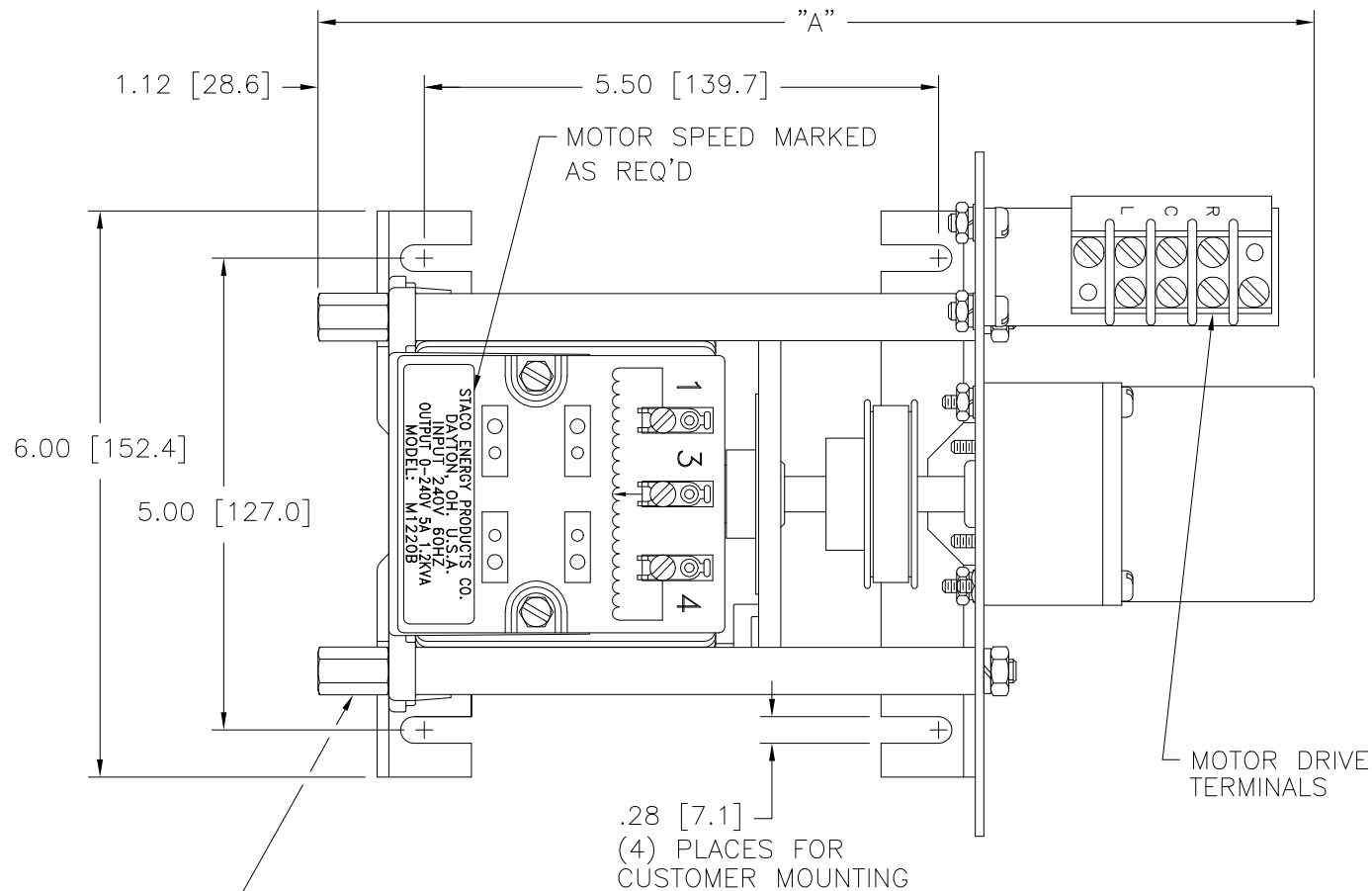
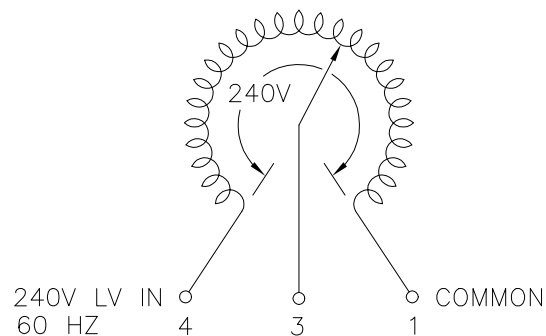


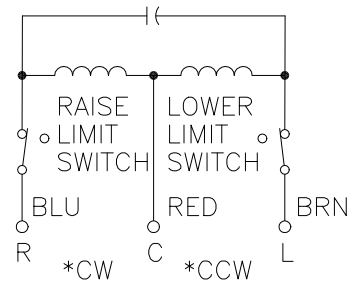
OPTIONAL TERMINALS
FOR PUSH ON OR
SOLDER CONNECTIONS
(.032 X .250) [0.8 X 6.4]



4) STANDOFFS TAPPED
1/4-28 X .38 [9.5] DEEP
FOR MOUNTING BOLTS




SCHEMATIC
VIEW FROM BASE END
FUSE RECOMMENDED BUT NOT SUPPLIED



MOTOR CIRCUIT
120V, 50/60 HZ
* ROTATION AS VIEWED
FROM MOTOR END
MOTOR SPEED: SEE CHART

+ MOTOR DRIVEN UNITS USE TERMINAL CONNECTIONS FOR CCW
INCREASING VOLTAGE, AS VIEWED FROM BASE END.

SPEED (SECONDS)	MODEL NUMBER	DIM "A"
5	5M1220B	10.56 [268.2]
15	15M1220B	10.56 [268.2]
30	30M1220B	10.95 [278.1]
60	60M1220B	10.95 [278.1]

SPECIFICATIONS															
WIRING	INPUT		VOLTS	OUTPUT				SHAFT ROTATION TO INCREASE VOLTAGE	TERMINAL CONNECTIONS						
	VOLTS	HERTZ		CONSTANT CURRENT LOAD		CONSTANT IMPEDANCE LOAD			FOR INCREASING VOLTAGE AS VIEWED FROM BASE END +						
				MAX. AMPS	MAX. KVA	MAX. AMPS	MAX. KVA		INPUT	JUMPER	OUTPUT				
SINGLE PHASE	240	60	0-240	5.0	1.20	7.0	1.68	CW	1-4	—	4-3				
								CCW	1-4	—	1-3				
UNLESS OTHERWISE SPECIFIED: TOLERANCE IS ± DECIMALS .XX .005 .002 .001 .0005 HOLES .002 ANGLES 1° DRAFT 1-1/2°			UNITS IN [mm]		TITLE: SPEC. CONTROL DRAWING MOTORIZED VARIABLE XFMR MODEL: M1220B					 STACO ENERGY PRODUCTS CO. A COMPONENTS COMPANY OF AMERICA COMPANY DAYTON, OHIO U.S.A.					
MATERIAL :		ALL DIMENSIONS APPLY AFTER PLATING													
The information and design disclosed herein was originated by and is the property of STACO ENERGY PRODUCTS CO., which reserves all patent, proprietary, design, manufacturing, reproduction, use and sale rights thereto, and to any article disclosed therein except to the extent rights are expressly granted to others. The foregoing does not apply to vendor proprietary parts.				DRAWN BY S.A. SMITH		DATE 9/26/97		FIRST USED ON		DO NOT SCALE DWG.		CUSTOMER APPROVAL		DATE	
				CHECKER		DATE		WEIGHT APPROX. 15.50 LBS		CODE IDENT. NO. 83008		DWG. SIZE		DWG. NO.	
				ENGINEER		DATE		SCALE 1 = 1		SHEET 1 OF 1		D		031-3360	



Mouser Electronics

Authorized Distributor

Click to View Pricing, Inventory, Delivery & Lifecycle Information:

Staco:

M1220B