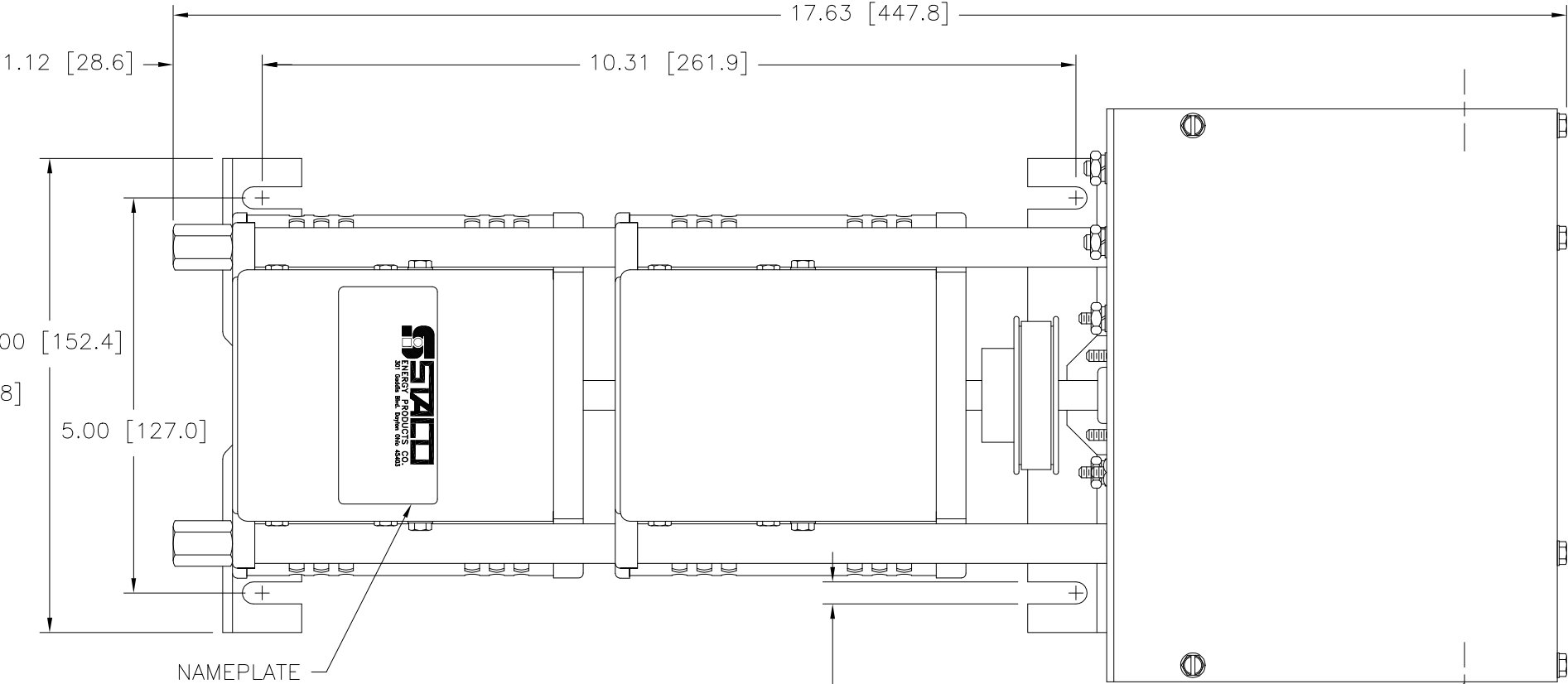


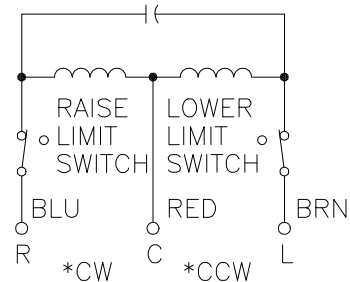
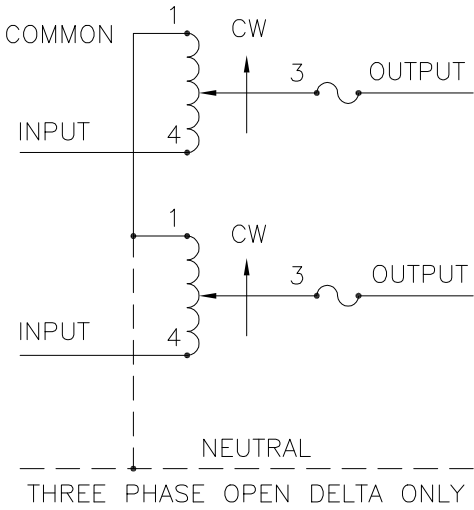
(4) STANDOFFS TAPPED
1/4-28 X .38 [9.5] DEEP
FOR MOUNTING BOLTS

.88 [22.2] DIA. KNOCKOUT
(4) PLACES FOR
WIRING CONNECTIONS




.28 [7.1]
(4) PLACES FOR
CUSTOMER MOUNTING

.88 [22.2] DIA. KNOCKOUT
(4) PLACES FOR
MOTOR CONNECTIONS



- + MOTOR DRIVEN UNITS USE TERMINAL CONNECTIONS FOR CCW INCREASING VOLTAGE, AS VIEWED FROM BASE END.
- π IF GANGED UNITS ARE USED IN A SYSTEM THAT ORDINARILY HAS A COMMON NEUTRAL OR GROUND BETWEEN SOURCE AND LOAD, THE NEUTRAL OR GROUND MUST BE CONNECTED TO THE COMMON TERMINALS OF THE VARIABLE TRANSFORMER ASSEMBLY. IF THE SYSTEM HAS NO NEUTRAL, THE LOAD MUST BE BALANCED OR THE TRANSFORMER WILL BE DAMAGED.
- JUMPER PROVIDED IN STANDARD COMMON POSITION AND SHOULD BE MOVED OR REMOVED AS REQUIRED.
- ++ LINE TO LINE VOLTAGE.

SPEED (SECONDS)	MODEL NUMBER
5	5M1210BCT-2
15	15M1210BCT-2
30	30M1210BCT-2
60	60M1210BCT-2

SPECIFICATIONS																
WIRING	INPUT		OUTPUT					SHAFT ROTATION TO INCREASE VOLTAGE	TERMINAL CONNECTIONS							
	VOLTS	HERTZ	VOLTS	CONSTANT CURRENT LOAD		CONSTANT IMPEDANCE LOAD			FOR INCREASING VOLTAGE AS VIEWED FROM BASE END +							
				MAX. AMPS	MAX. KVA	MAX. AMPS	MAX. KVA		INPUT	JUMPER	OUTPUT					
SINGLE PHASE SERIES	240	60	0-240	12	2.88	15	3.60	CW	1-1	4-4	3-3					
								CCW	4-4	1-1	3-3					
THREE PHASE OPEN DELTA π	120 ++	60	0-120	12	2.49	15	3.12	CW	1-4-1	4-4	3-4-3					
								CCW	4-1-4	1-1	3-1-3					
UNLESS OTHERWISE SPECIFIED: TOLERANCE IS ±			UNITS		TITLE: SPEC. CONTROL DRAWING MOTORIZED VARIABLE XFMR MODEL: M1210BCT-2			 A COMPONENTS CORPORATION OF AMERICA COMPANY DAYTON, OHIO U.S.A.								
DECIMALS .XX .0005		HOLES .002		ANGLES 1°								DRAFT 1-1/2°				
MATERIAL :			ALL DIMENSIONS APPLY AFTER PLATING													
The information and design disclosed herein was originated by and is the property of STACO ENERGY PRODUCTS CO., which reserves all patent, proprietary, design, manufacturing, reproduction, use and sale rights thereto, and to any article disclosed therein except to the extent rights are expressly granted to others. The foregoing does not apply to vendor proprietary parts.					DRAWN BY S.A. SMITH		DATE 9/25/97		FIRST USED ON		DO NOT SCALE DWG.		CUSTOMER APPROVAL		DATE	
					CHECKER		DATE		WEIGHT APPROX. 30.75 LBS		CODE IDENT. NO. 83008		DWG. SIZE D		DWG. NO. 031-3200	
					ENGINEER		DATE		SCALE 1 = 1		SHEET 1 OF 1					



Mouser Electronics

Authorized Distributor

Click to View Pricing, Inventory, Delivery & Lifecycle Information:

Staco:

M1210BCT-2