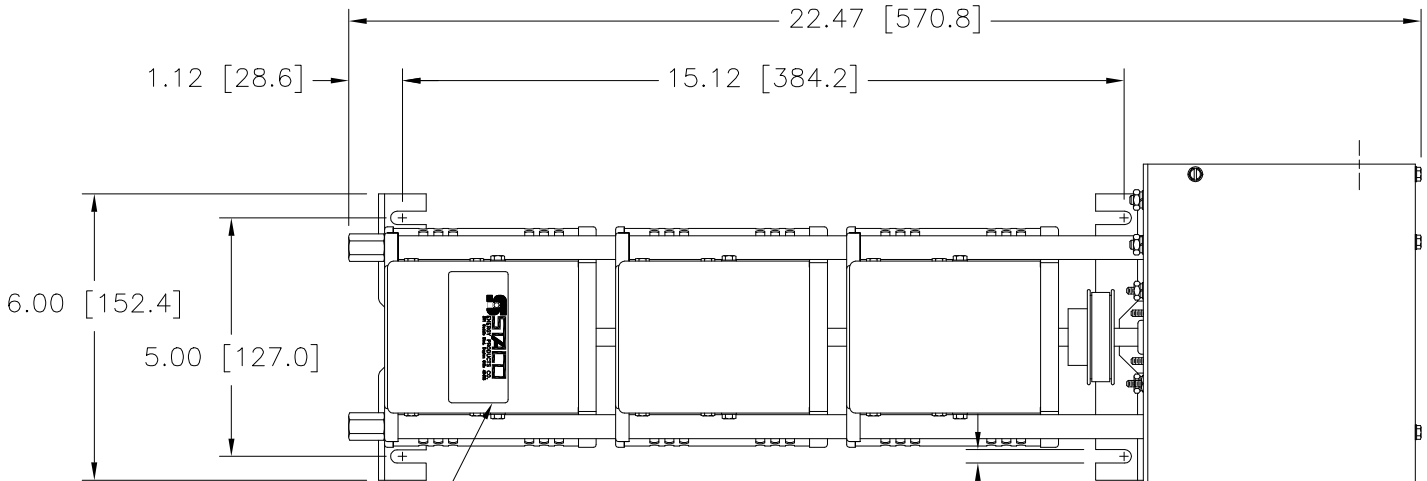


(4) STANDOFFS TAPPED
1/4-28 X .38 [9.5] DEEP
FOR MOUNTING BOLTS

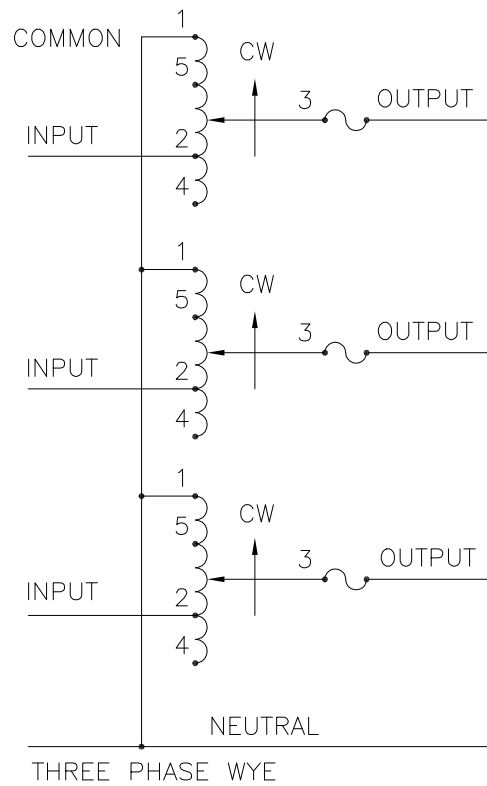
.88 [22.2] DIA. KNOCKOUT
(6) PLACES FOR
WIRING CONNECTIONS



NAMEPLATE

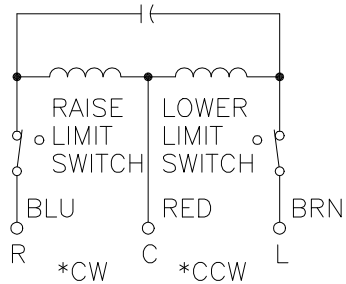
.28 [7.1]
(4) PLACES FOR
CUSTOMER MOUNTING

.88 [22.2] DIA. KNOCKOUT
(4) PLACES FOR
MOTOR CONNECTIONS



SCHEMATIC


FUSE RECOMMENDED BUT NOT SUPPLIED



MOTOR CIRCUIT
120V, 50/60 HZ
* ROTATION AS VIEWED
FROM MOTOR END
MOTOR SPEED: SEE CHART

- ++ LINE TO LINE VOLTAGE
- + MOTOR DRIVEN UNITS USE TERMINAL CONNECTIONS FOR CCW INCREASING VOLTAGE, AS VIEWED FROM BASE END.
- π IF GANGED UNITS ARE USED IN A SYSTEM THAT ORDINARILY HAS A COMMON NEUTRAL OR GROUND BETWEEN SOURCE AND LOAD, THE NEUTRAL OR GROUND MUST BE CONNECTED TO THE COMMON TERMINALS OF THE VARIABLE TRANSFORMER ASSEMBLY. IF THE SYSTEM HAS NO NEUTRAL, THE LOAD MUST BE BALANCED OR THE TRANSFORMERS WILL BE DAMAGED.
- JUMPER PROVIDED IN THE STANDARD COMMON POSITION AND SHOULD BE MOVED OR REMOVED AS REQUIRED.

| SPEED (SECONDS) | MODEL NUMBER |
|-----------------|--------------|
| 5 | 5M1010BCT-3 |
| 15 | 15M1010BCT-3 |
| 30 | 30M1010BCT-3 |
| 60 | 60M1010BCT-3 |

| SPECIFICATIONS | | | | | | | | | | | | | | | |
|---|-----------|-------|--|------------------------|----------|-------------------------|------------------------------------|---|-------|--------------------------|--------|-------------------|--|----------|--|
| WIRING | INPUT | | OUTPUT | | | | SHAFT ROTATION TO INCREASE VOLTAGE | TERMINAL CONNECTIONS | | | | | | | |
| | VOLTS | HERTZ | VOLTS | CONSTANT CURRENT LOAD | | CONSTANT IMPEDANCE LOAD | | FOR INCREASING VOLTAGE AS VIEWED FROM BASE END + | | | | | | | |
| | | | | MAX. AMPS | MAX. KVA | MAX. AMPS | | MAX. KVA | INPUT | JUMPER | OUTPUT | | | | |
| | | | | | | | | | | | | | | | |
| | | | | | | | | | | | | | | | |
| THREE PHASE WYE Π | 240 ++ | 50/60 | 0-240 | 10 | 4.16 | 13 | 5.4 | CW | 1-1-1 | 4-4-4 | 3-3-3 | | | | |
| | | | | | | | | CCW | 4-4-4 | 1-1-1 | 3-3-3 | | | | |
| | | 60 | 0-280 | 10 | 4.85 | — | — | CW | 5-5-5 | 4-4-4 | 3-3-3 | | | | |
| | | | | | | | | CCW | 2-2-2 | 1-1-1 | 3-3-3 | | | | |
| UNLESS OTHERWISE SPECIFIED, TOLERANCE IS ± DECIMALS .XX, HOLES .002, ANGLES 1°, DRAFT 1-1/2°, UNITS IN [mm] | | | TITLE: SPEC. CONTROL DRAWING | | | | |  STACO ENERGY PRODUCTS CO. A COMPONENTS CORPORATION OF AMERICA COMPANY DAYTON, OHIO U.S.A. | | | | | | | |
| MATERIAL: ALL DIMENSIONS APPLY AFTER PLATING | | | MOTORIZED VARIABLE XFMR MODEL: M1010BCT-3 | | | | | | | | | | | | |
| | | | | | | | | | | | | | | | |
| The information and design disclosed herein was originated by and is the property of STACO ENERGY PRODUCTS CO., which reserves all patent, proprietary, design, manufacturing, reproduction, use and sale rights thereto, and to any article disclosed therein except to the extent rights are expressly granted to others. The foregoing does not apply to vendor proprietary parts. | | | | DRAWN BY S.A. SMITH | | DATE 9/22/97 | | FIRST USED ON | | DO NOT SCALE DWG. | | CUSTOMER APPROVAL | | DATE | |
| | | | | CHECKER | | DATE | | WEIGHT APPROX. 42 LBS | | CODE IDENT. NO. 83008 | | DWG. SIZE | | DWG. NO. | |
| | | | | ENGINEER | | DATE | | SCALE .50=1 | | SHEET 1 OF 1 | | D | | 031-1876 | |
| | | | | | | | | | | | | | | | |



Mouser Electronics

Authorized Distributor

Click to View Pricing, Inventory, Delivery & Lifecycle Information:

Staco:

[M1010BCT-3](#)