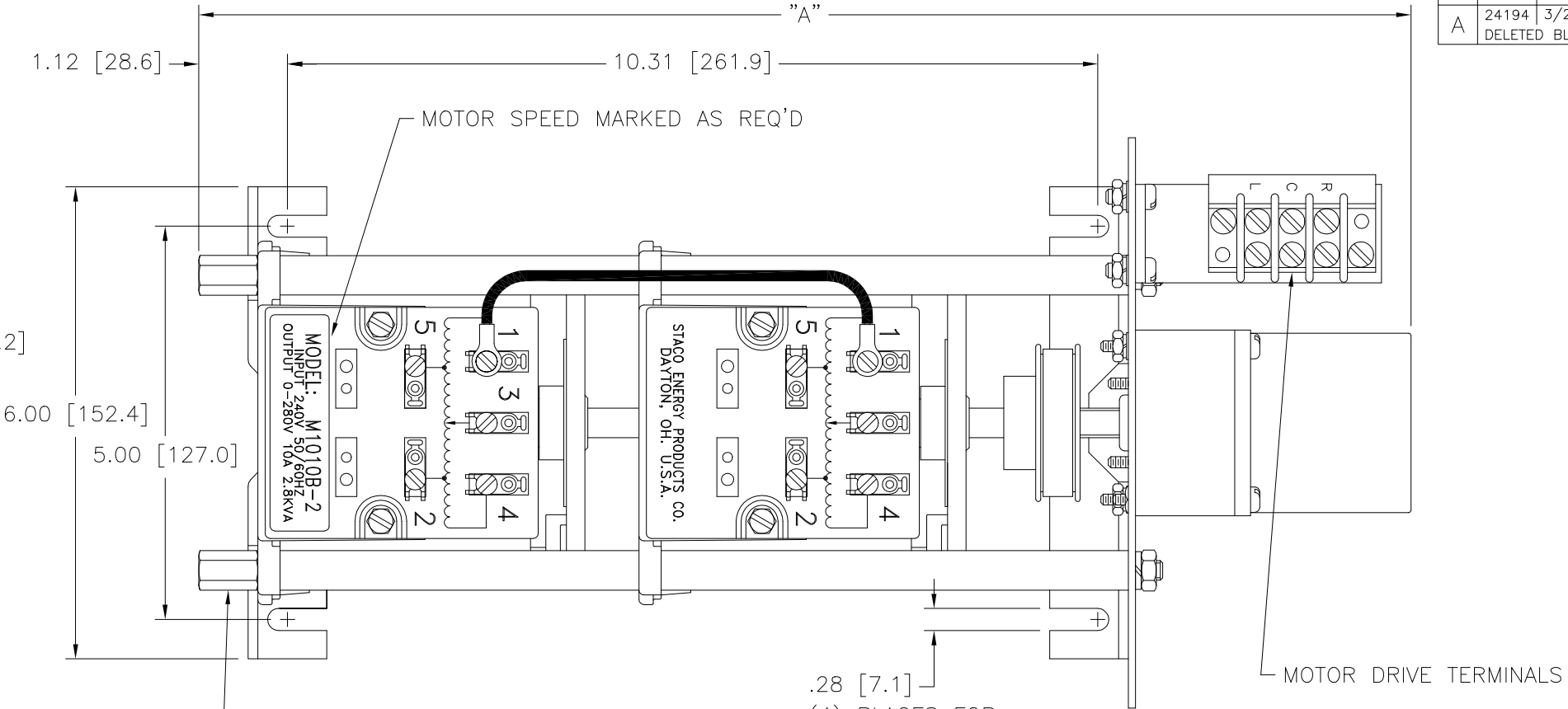


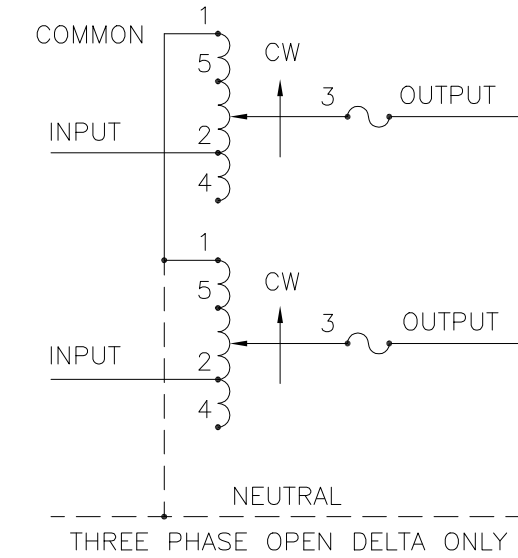
OPTIONAL TERMINALS
FOR PUSH ON OR
SOLDER CONNECTIONS
(.032 X .250) [0.8 X 6.4]



(4) STANDOFFS TAPPED
1/4-28 X .38 [9.5] DEEP
FOR MOUNTING BOLTS

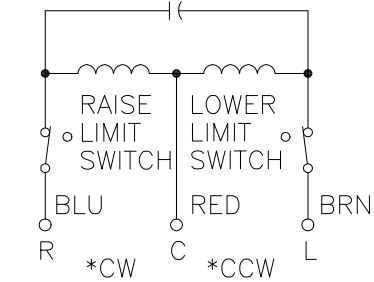
(4) PLACES FOR
CUSTOMER MOUNTING

- + MOTOR DRIVEN UNITS USE TERMINAL CONNECTIONS FOR CCW INCREASING VOLTAGE, AS VIEWED FROM BASE END.
- π IF GANGED UNITS ARE USED IN A SYSTEM THAT ORDINARILY HAS A COMMON NEUTRAL OR GROUND BETWEEN SOURCE AND LOAD, THE NEUTRAL OR GROUND MUST BE CONNECTED TO THE COMMON TERMINALS OF THE VARIABLE TRANSFORMER ASSEMBLY. IF THE SYSTEM HAS NO NEUTRAL, THE LOAD MUST BE BALANCED OR THE TRANSFORMER WILL BE DAMAGED.
- JUMPER PROVIDED IN STANDARD COMMON POSITION AND SHOULD BE MOVED OR REMOVED AS REQUIRED.
- ++ LINE TO LINE VOLTAGE.



SCHEMATIC

(FUSE RECOMMENDED BUT NOT SUPPLIED)



MOTOR CIRCUIT
120V, 50/60 HZ
* ROTATION AS VIEWED
FROM MOTOR END
MOTOR SPEED: SEE CHART

SPEED (SECONDS)	MODEL NUMBER	DIM "A"
5	5M1010B-2	15.40 [391.2]
15	15M1010B-2	15.40 [391.2]
30	30M1010B-2	15.79 [401.1]
60	60M1010B-2	15.79 [401.1]

SPECIFICATIONS															
WIRING	INPUT		VOLTS	OUTPUT				SHAFT ROTATION TO INCREASE VOLTAGE	TERMINAL CONNECTIONS						
	VOLTS	HERTZ		CONSTANT CURRENT LOAD		CONSTANT IMPEDANCE LOAD			FOR INCREASING VOLTAGE AS VIEWED FROM BASE END +						
				MAX. AMPS	MAX. KVA	MAX. AMPS	MAX. KVA		INPUT	JUMPER ■	OUTPUT				
SINGLE PHASE SERIES	240	50/60	0-240	10	2.4	13	3.12	CW	1-1	4-4	3-3				
							CCW	4-4	1-1	3-3					
			0-280	10	2.8	—	—	CW	5-5	4-4	3-3				
							CCW	2-2	1-1	3-3					
THREE PHASE OPEN DELTA π	120 ++	50/60	0-120	10	2.08	13	2.70	CW	1-4-1	4-4	3-4-3				
							CCW	4-1-4	1-1	3-1-3					
			0-140	10	2.42	—	—	CW	5-4-5	4-4	3-4-3				
							CCW	2-1-2	1-1	3-1-3					
UNLESS OTHERWISE SPECIFIED, TOLERANCE IS ±				TITLES: SPEC. CONTROL DRAWING											
DECIMALS .XX .XXX .005				Holes .002 1°											
ANGLES 1°				DRAFT 1-1/2°											
UNITS IN [mm]				MATERIAL: ALL DIMENSIONS APPLY AFTER PLATING											
				MOTORIZED VARIABLE XFMR											
				MODEL: M1010B-2											
<p>The information and design disclosed herein was originated by and is the property of STACO ENERGY PRODUCTS CO., which reserves all patent, proprietary, design, manufacturing, reproduction, use and sale rights thereto, and to any article disclosed therein except to the extent rights are expressly granted to others. The foregoing does not apply to vendor proprietary parts.</p>				DRAWN BY		DATE		FIRST USED ON		DO NOT SCALE DWG.		CUSTOMER APPROVAL		DATE	
				S.A. SMITH		9/19/97									
				CHECKER		DATE		WEIGHT APPROX. 29 LBS		CODE IDENT. NO. 83008		DWG. SIZE		DWG. NO.	
				ENGINEER		DATE		SCALE 1=1		SHEET 1 OF 1		D		031-1740	



Mouser Electronics

Authorized Distributor

Click to View Pricing, Inventory, Delivery & Lifecycle Information:

Staco:

M1010B-2