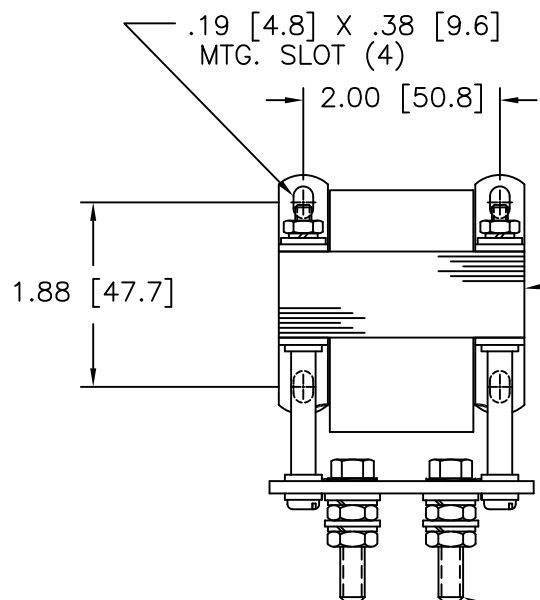


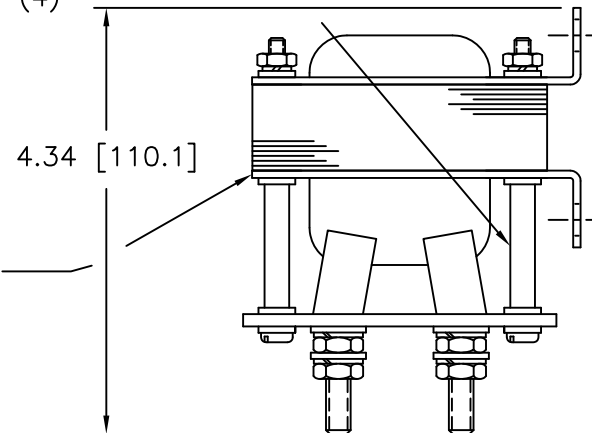
DWG. SIZE	DWG. NO.		
C	850-0180		
REVISIONS			
SYM.	E.C.N.	DATE	APVD
P	24803	4/10/02	
	REDRAWN TO CAD		
R	24950	9/12/02	
	REVISED & UPDATED		



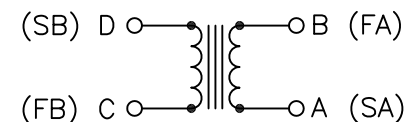
620-0908 SPACER (4)  
 596-0229-N6 #8-32 X 3 PHSMS (4)  
 732-0545-N6 #8 FWS (16)  
 732-0351-N6 #8 SLWS (4)  
 472-0101-N6 #8-32 HMSNS (4)

023-1488 CHOKE AS PUR.  
 273-0234 AS MOD. - PROC.

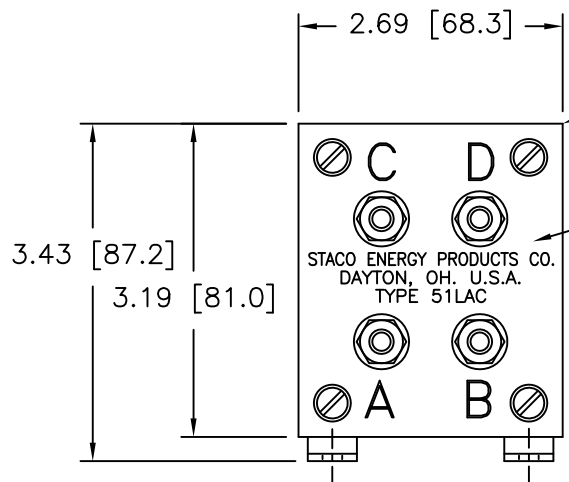
657-0018-C7 BRACKET (4)



596-2145-N6 1/4-20 X 1-1/4 HHSMS (4)  
 472-0163-N6 1/4-20 HMSNS X .156 THK. (8)  
 732-0381-N6 1/4 SLWS (8)  
 732-0565-N6 #12 FWS (8)



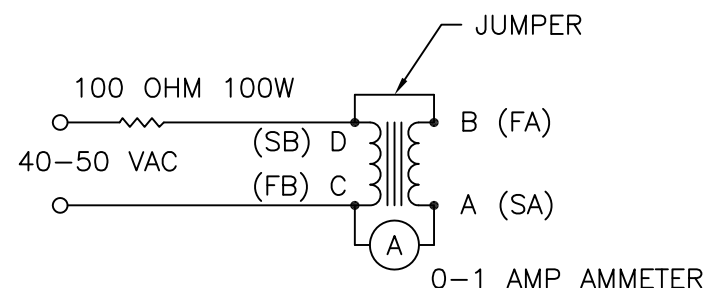
SCHEMATIC



682-0375 TERMINAL BOARD


639-1240 SCREEN

STACO ENERGY PRODUCTS CO.  
 DAYTON, OH. U.S.A.  
 TYPE 51LAC



TEST CIRCUIT

READ APPROX. 0.2 AMPERES BETWEEN "C" AND "D" IF THE START AND FINISH OF EITHER WINDING IS REVERSED THE AMMETER WILL READ ZERO

UNLESS OTHERWISE SPECIFIED, TOLERANCE IS ± DECIMALS   HOLES   ANGLES   DRAFT .XX   .0005   .002   1°   1-1/2° XXX   .005		UNITS IN [mm]	TITLE:  OUTLINE CHOKE TYPE: 51LAC				 A Components Corporation of America Company 302 Gaddis Boulevard Dayton, Ohio 45403 USA		
MATERIAL	ALL DIMENSIONS APPLY AFTER PLATING								
The information and design disclosed herein was originated by and is the property of STACO ENERGY PRODUCTS CO., which reserves all patent, proprietary, design, manufacturing, reproduction, use and sale rights thereto, and to any article disclosed therein except to the extent rights are expressly granted to others. The foregoing does not apply to vendor proprietary parts.			DRAWN BY TIM RAU	DATE 4/10/02	FIRST USED ON	DO NOT SCALE DWG.			
			CHECKER	DATE	WEIGHT APPROX.	CAGE CODE 83008	DWG. SIZE	DWG. NO.	
			ENGINEER	DATE	SCALE 1=1	SHEET 1 OF 1	C	850-0180	

# Mouser Electronics

Authorized Distributor

Click to View Pricing, Inventory, Delivery & Lifecycle Information:

Staco:

51LAC-S