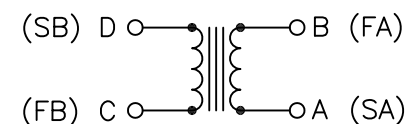
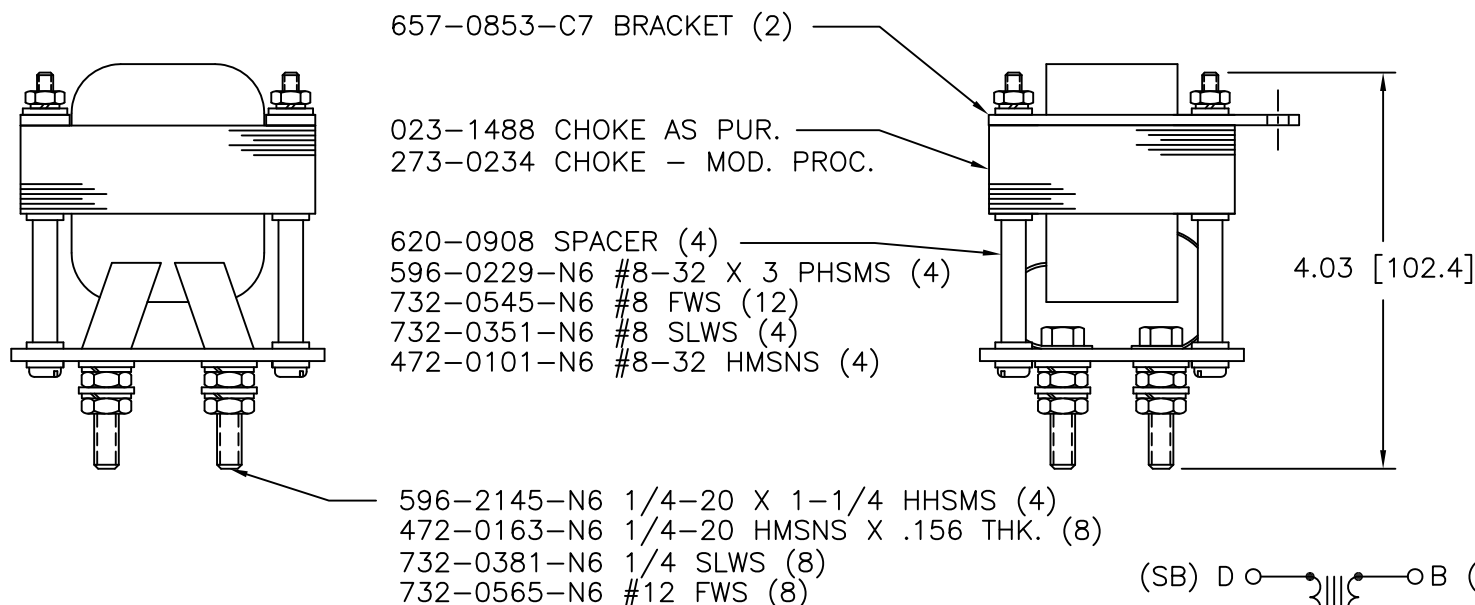
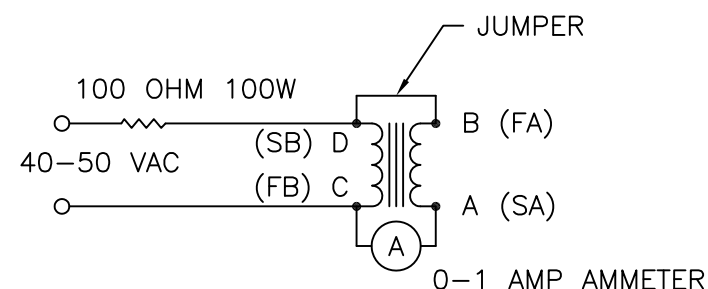
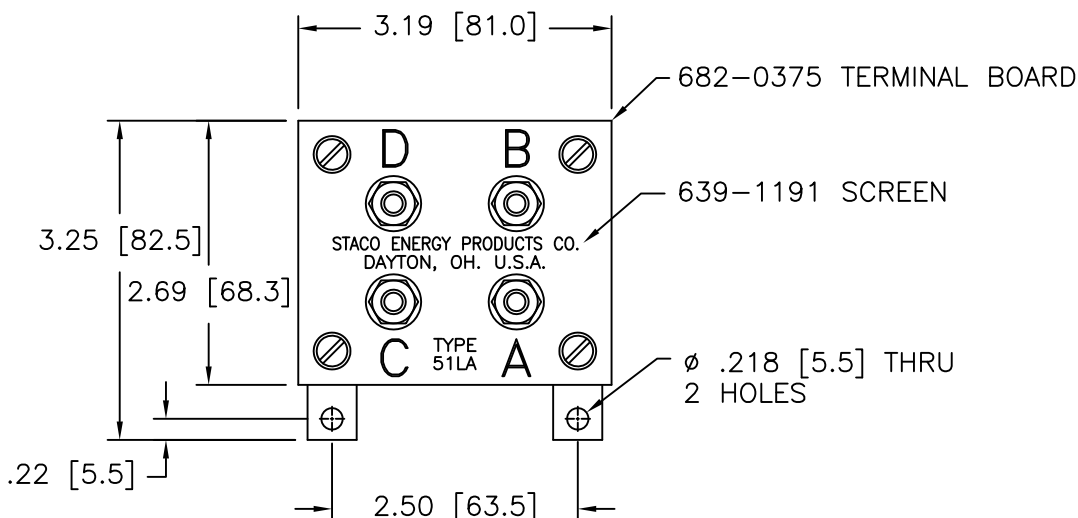


DWG. NO. C	DWG. NO. 850-0178		
REVISIONS			
SYM.	E.C.N.	DATE	APVD
R	24803	4/10/02	REDRAWN TO CAD
S	24950	9/12/02	REVISED & UPDATED



SCHEMATIC




TEST CIRCUIT

READ APPROX. 0.2 AMPERES BETWEEN "C" AND "A" IF THE START AND FINISH OF EITHER WINDING IS REVERSED THE AMMETER WILL READ ZERO

NOTE:

THE UNIT SHALL WITHSTAND A 1500 V $\pm 5\%$ 60HZ. APPLICATION FROM EACH WINDING TO THE CORE AND BETWEEN WINDINGS WITHOUT EVIDENCE OF FLASHOVER OR BREAKDOWN

UNLESS OTHERWISE SPECIFIED, TOLERANCE IS ± DECIMALS HOLES ANGLES DRAFT .XX .XXX .06 .002 1° 1-1/2° .XXX .005				UNITS IN [mm]		TITLE: SPEC. CONTROL DRAWING CHOKE TYPE: 51LA				 A Components Corporation of America Company 301 Gadsby Boulevard • Dayton, Ohio 45403 USA			
MATERIAL				ALL DIMENSIONS APPLY AFTER PLATING									
The information and design disclosed herein was originated by and is the property of STACO ENERGY PRODUCTS CO., which reserves all patent, proprietary, design, manufacturing, reproduction, use and sale rights thereto, and to any article disclosed therein except to the extent rights are expressly granted to others. The foregoing does not apply to vendor proprietary parts.						DRAWN BY TIM RAU		DATE 4/10/02		FIRST USED ON		DO NOT SCALE DWG.	
						CHECKER		DATE		WEIGHT APPROX.		CAGE CODE 83008	
						ENGINEER		DATE		SCALE 1=1		SHEET 1 OF 1	
										DWG. NO. 850-0178		C	

Mouser Electronics

Authorized Distributor

Click to View Pricing, Inventory, Delivery & Lifecycle Information:

Staco:

[51LA-S](#) [51LAC-X](#) [51LA-X](#)