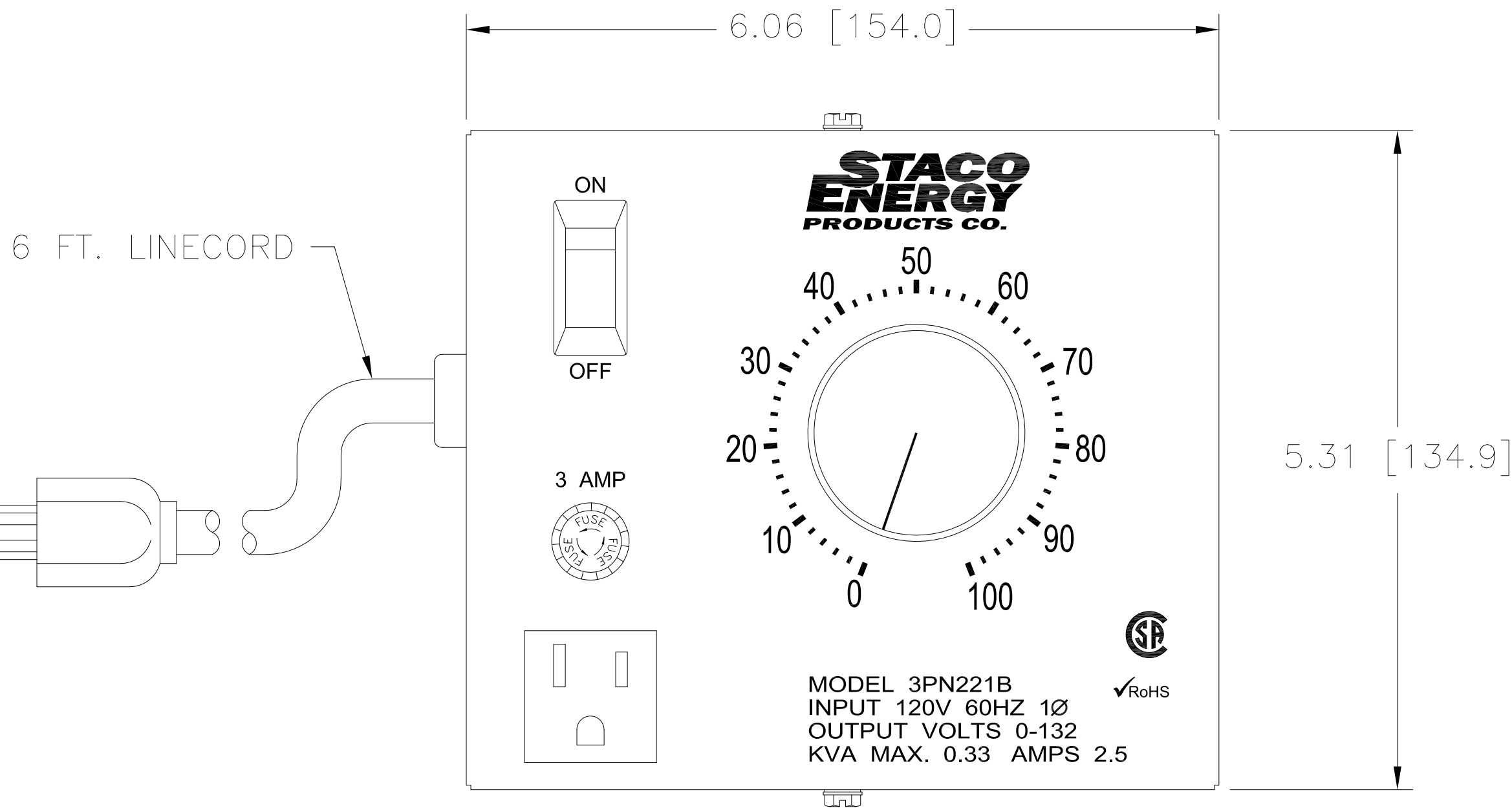
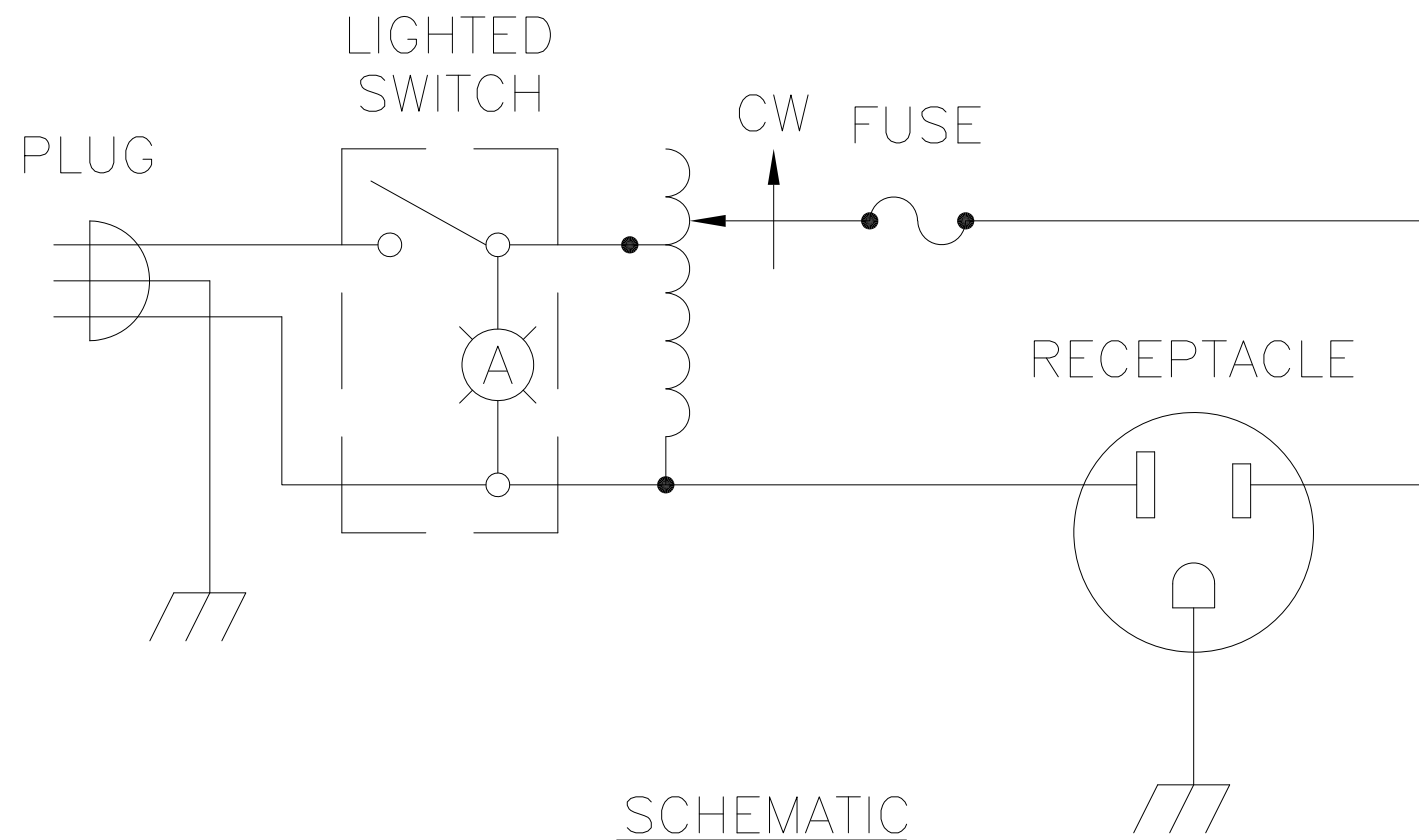
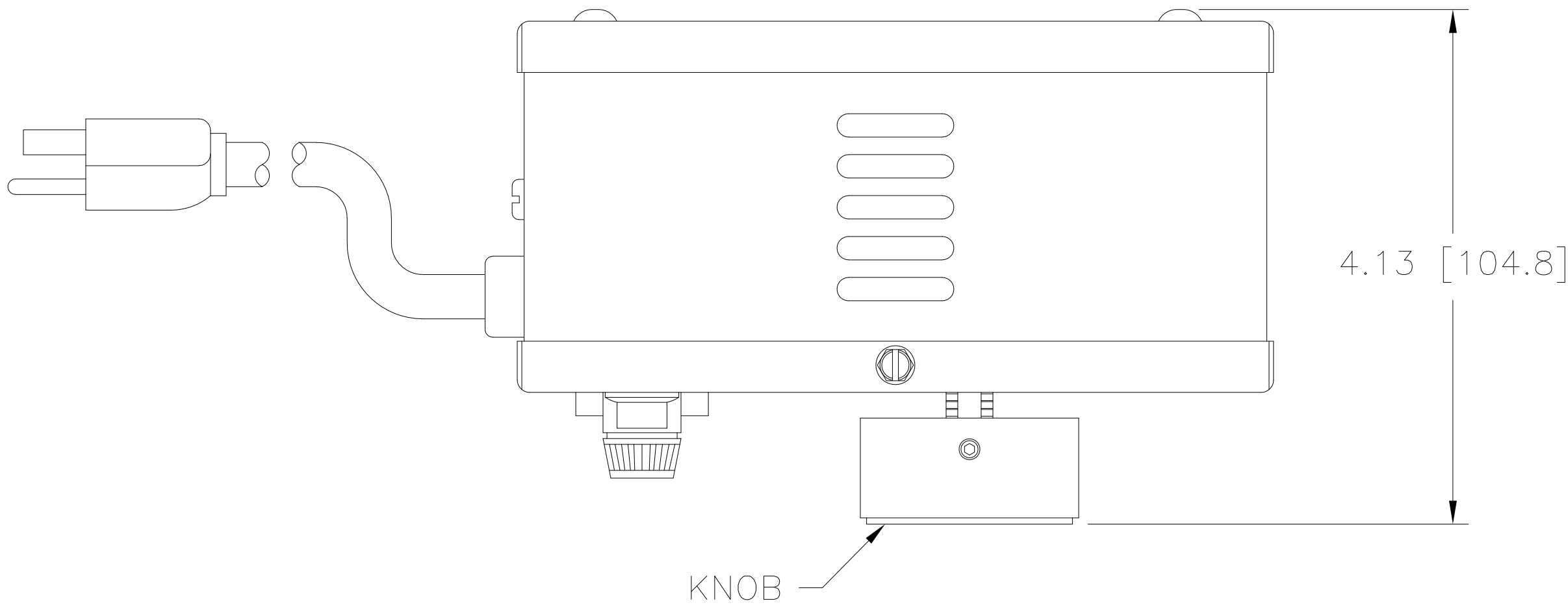


DWG. SIZE <b>C</b>	DWG. NO. 031-0157		
REVISIONS			
SYM.	E.C.O.	DATE	APVD.
A	25165	7/8/03	ADDED CSA LOGO
B	29424	5/18/20	REVD KNOB AND SCR N



SPECIFICATIONS					
WIRING	INPUT		OUTPUT		
	VOLTS	HERTZ	VOLTS	CONSTANT CURRENT LOAD	
SINGLE PHASE	120	60	0-132	MAX. AMPS	MAX. KVA
				2.50	0.33

UNLESS OTHERWISE SPECIFIED, TOLERANCE IS ± DECIMALS .XX <del>0.03</del> .005 HOLES .005 ANGLES 1° DRAFT 1-1/2°				UNITS IN [mm]
MATERIAL :				ALL DIMENSIONS APPLY AFTER PLATING
The information and design disclosed herein was originated by and is the property of STACO ENERGY PRODUCTS CO., which reserves all patent, proprietary, design, manufacturing, reproduction, use and sale rights thereto, and to any article disclosed therein except to the extent rights are expressly granted to others. The foregoing does not apply to vendor proprietary parts.				

TITLE: SPEC. CONTROL DRAWING VARIABLE TRANSFORMER MODEL: 3PN221B				
DRAWN BY S.A. SMITH	DATE 1/23/97	FIRST USED ON	DO NOT SCALE DWG.	
CHECKER	DATE	WEIGHT APPROX.	CAGE CODE 83008	
ENGINEER	DATE	SCALE 1=1	SHEET 1 OF 1	

**STACO ENERGY PRODUCTS CO.**  
A Components Corporation of America Company  
2425 Technical Drive Miamisburg, Ohio 45342 USA

DWG. SIZE <b>C</b>	DWG. NO. 031-0157
-----------------------	----------------------

# Mouser Electronics

Authorized Distributor

Click to View Pricing, Inventory, Delivery & Lifecycle Information:

Staco:

3PN221B