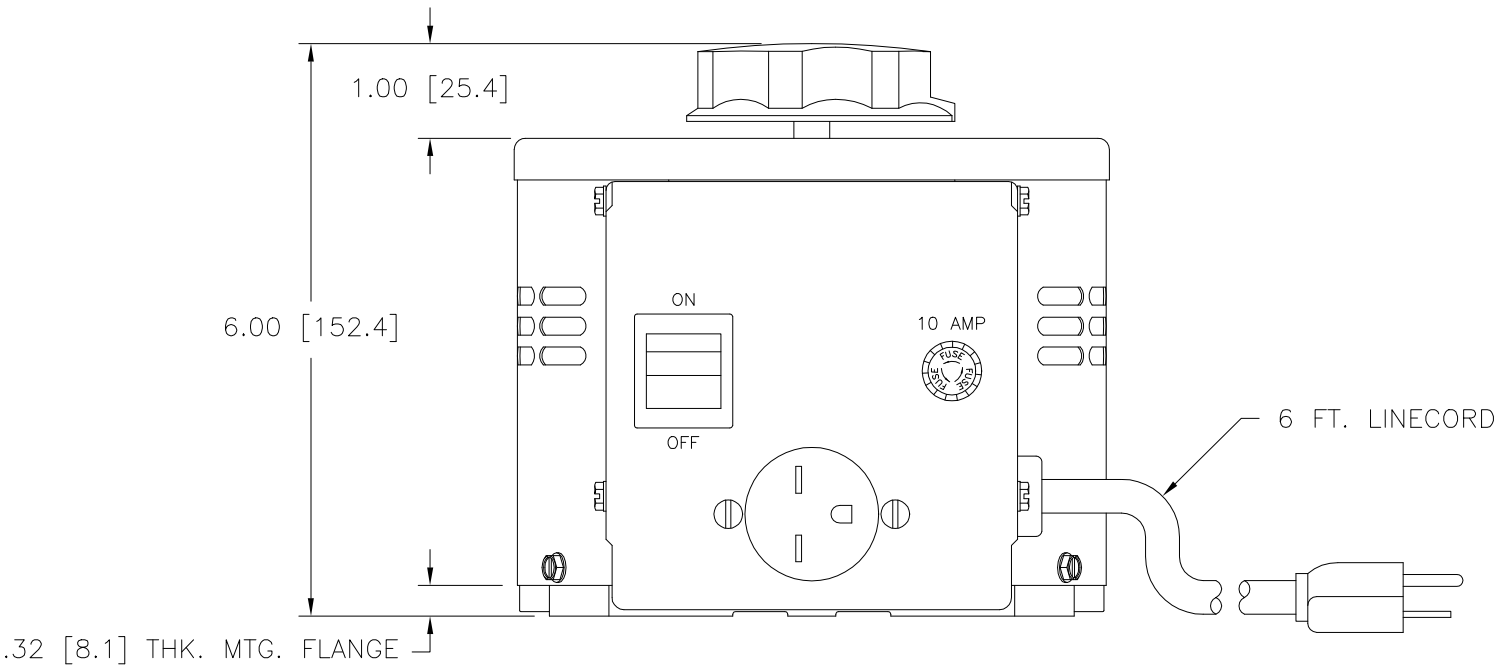
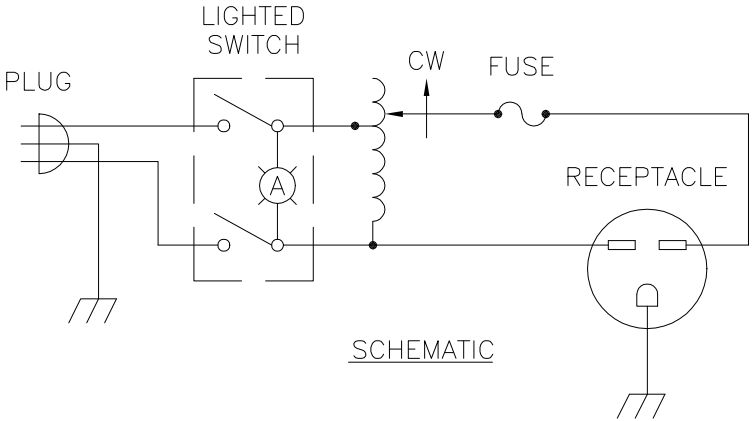
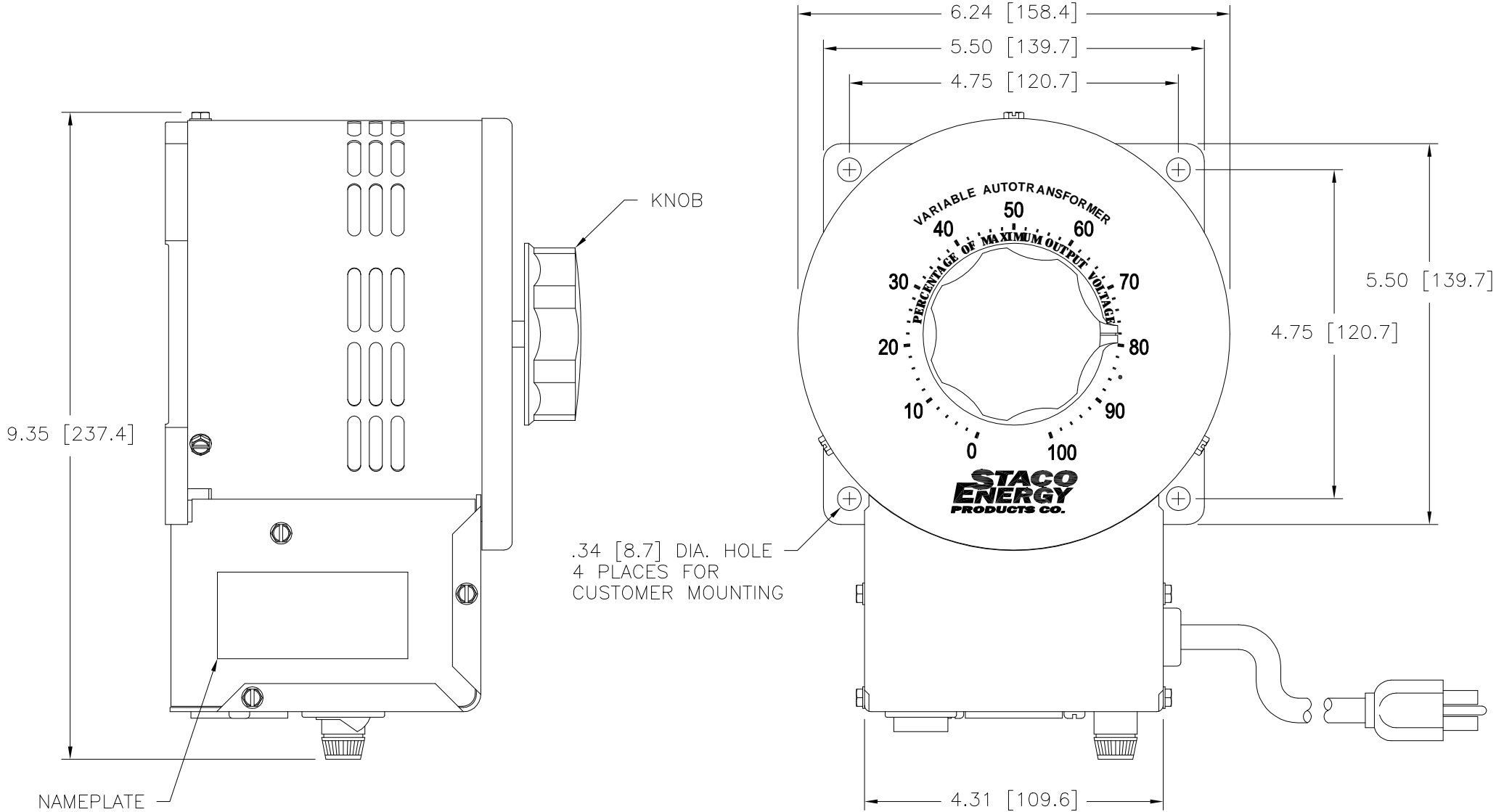



DWG. SIZE D	DWG. NO. 031-3945		
REVISIONS			
SYM.	E.C.N.	DATE	APVD.
A	24185	2/28/00	ROTATED RECEPTACLE
B	24536	3/13/01	
			REVISED SILKSCREEN



SPECIFICATIONS					
WIRING	INPUT		OUTPUT		
	VOLTS	HERTZ	VOLTS	CONSTANT CURRENT LOAD	
				MAX. AMPS	MAX. KVA
SINGLE PHASE	240	50/60	0-280	9.5	2.66

UNLESS OTHERWISE SPECIFIED, TOLERANCE IS ±					TITLE: SPEC. CONTROL DRAWING VARIABLE TRANSFORMER MODEL: 3PN1520B		 <b>A Components Corporation of Arnesen Company</b> 301 South Boulevard Dayton, Ohio 45403 USA								
DECIMALS	HOLES	ANGLES	DRAFT	UNITS											
.XX	.0000	.01	1°	1-1/2°	IN [mm]										
MATERIAL:					ALL DIMENSIONS APPLY AFTER PLATING										
The information and design disclosed herein was originated by and is the property of STACO ENERGY PRODUCTS CO., which reserves all patent, proprietary, design, manufacturing, reproduction, use and sale rights therein, and to any article disclosed therein except to the extent rights are expressly granted to others. The foregoing does not apply to vendor proprietary parts.															
											DRAWN BY	DATE	FIRST USED ON	DO NOT SCALE.	DWG. NO.
											S.A. SMITH	5/17/96	3PN1520B	DWG. NO.	
CHECKER	DATE	WEIGHT APPROX.	CAGE CODE	DWG. SIZE											
		22 LBS	83008												
ENGINEER	DATE	SCALE	SHEET												
		1=1	1 of 1												

# Mouser Electronics

Authorized Distributor

Click to View Pricing, Inventory, Delivery & Lifecycle Information:

Staco:

3PN1520B