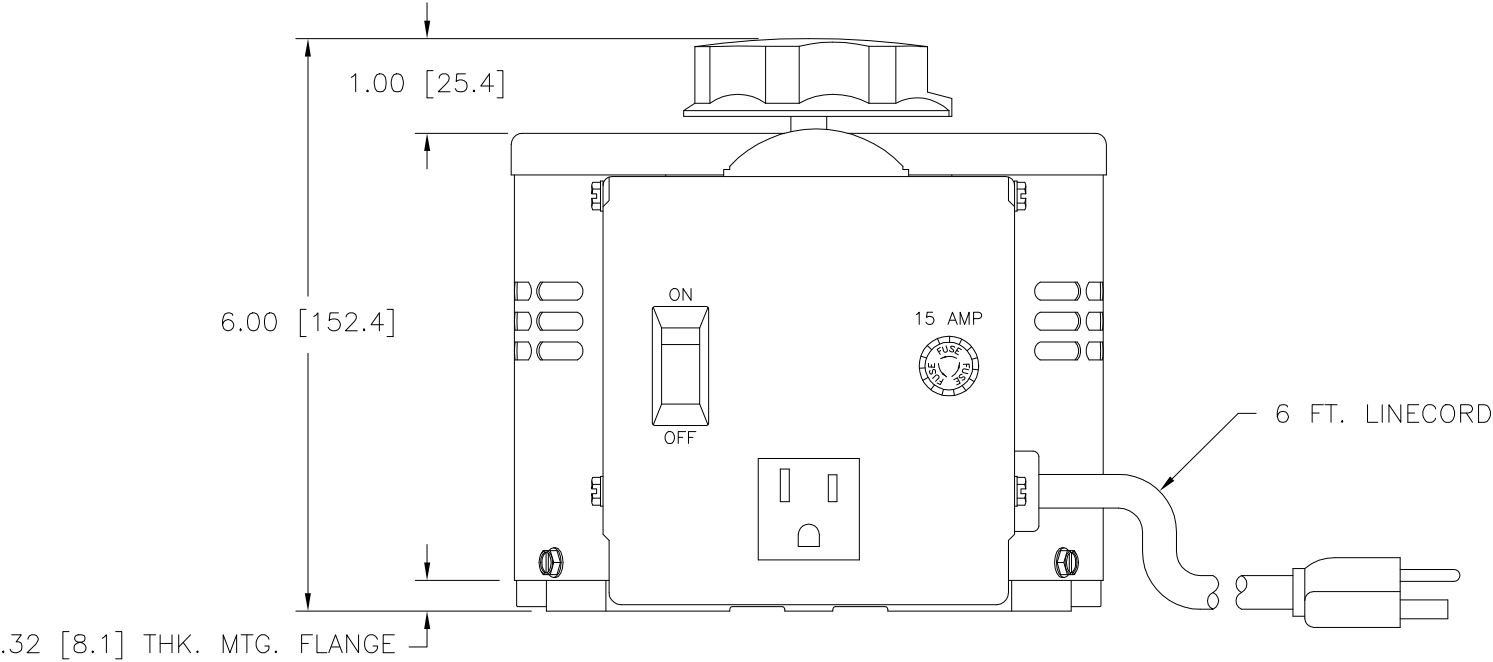
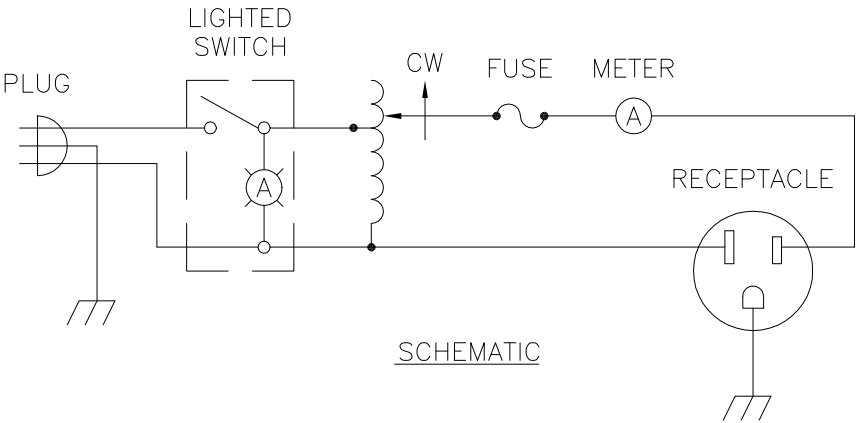
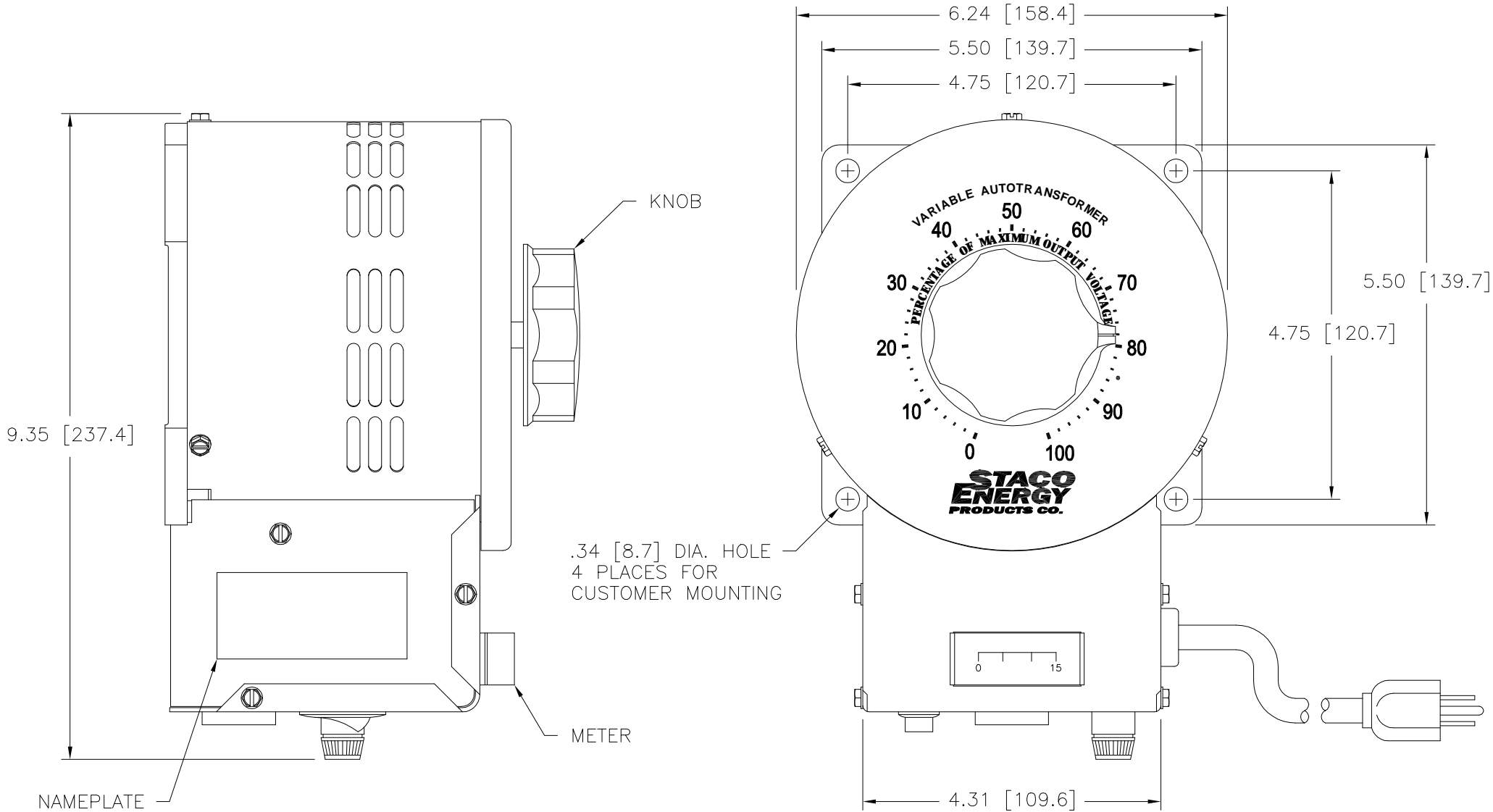



DWG. SIZE D	DWG. NO. 031-3647		
REVISIONS			
SYM.	E.C.N.	DATE	APVD.
A	24536	3/13/01	
REVISED SILKSCREEN			



SPECIFICATIONS					
WIRING	INPUT		OUTPUT		
	VOLTS	HERTZ	VOLTS	CONSTANT CURRENT LOAD	
				MAX. AMPS	MAX. KVA
SINGLE PHASE	120	50/60	0-140	15	2.10

UNLESS OTHERWISE SPECIFIED, TOLERANCE IS ±				UNITS		TITLE: SPEC. CONTROL DRAWING VARIABLE TRANSFORMER MODEL: 3PN1510BA				 A Components Corporation of Arnesen Company 301 South Boulevard Dayton, Ohio 45403 USA							
DECIMALS	HOLES	ANGLES	DRAFT	IN [mm]													
.XX .0000 .06	.0002 .01	1°	1-1/2°	ALL DIMENSIONS APPLY AFTER PLATING													
MATERIAL:																	
The information and design disclosed herein was originated by and is the property of STACO ENERGY PRODUCTS CO., which reserves all patent, proprietary, design, manufacturing, reproduction, use and sale rights therein, and to any article disclosed therein except to the extent rights are expressly granted to others. The foregoing does not apply to vendor proprietary parts.						DRAWN BY		DATE		FIRST USED ON		DO NOT SCALE. DWG.					
						S.A. SMITH		5/16/96		3PN1510BA							
						CHECKER		DATE		WEIGHT APPROX.		CAGE CODE		DWG. SIZE		DWG. NO.	
										18 LBS		83008		D		031-3647	
						ENGINEER		DATE		SCALE		SHEET 1 of 1					
										1=1							

# Mouser Electronics

Authorized Distributor

Click to View Pricing, Inventory, Delivery & Lifecycle Information:

Staco:

3PN1510BA