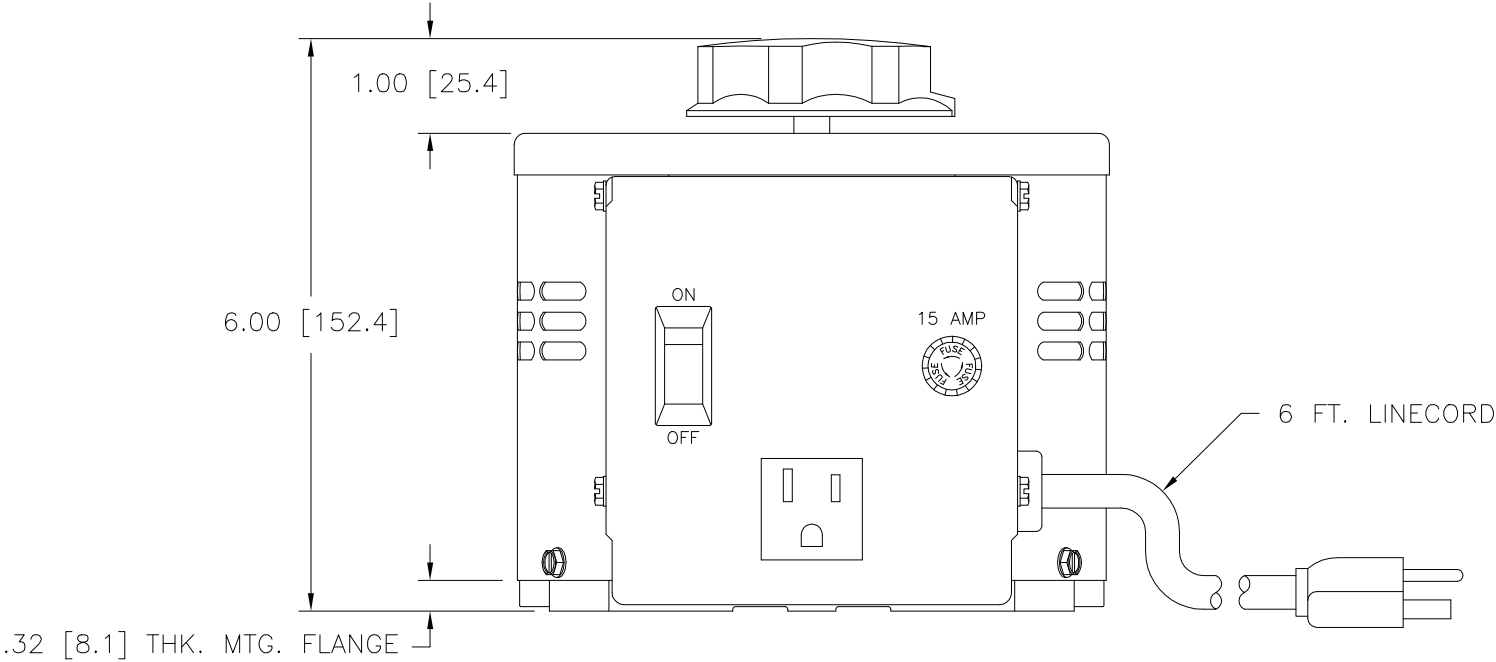
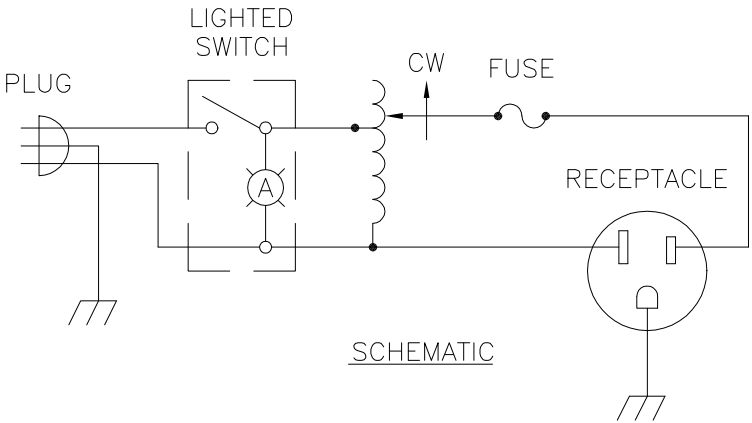
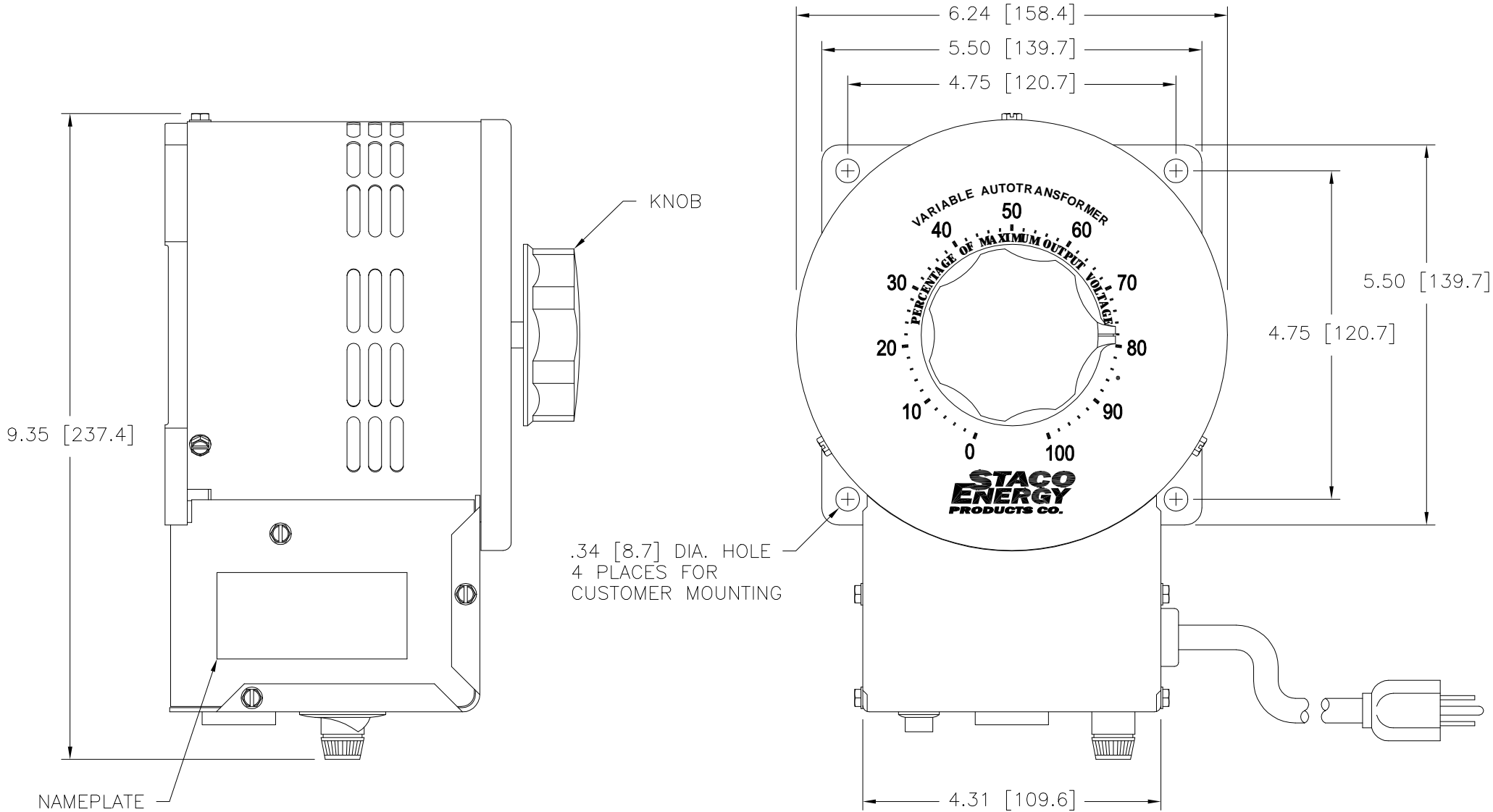



DWG. SIZE D	DWG. NO. 031-3645		
REVISIONS			
SYM.	E.C.N.	DATE	APVD.
A	24536	3/13/01	
REVISED SILKSCREEN			



SPECIFICATIONS					
WIRING	INPUT		OUTPUT		
	VOLTS	HERTZ	VOLTS	CONSTANT CURRENT LOAD	
				MAX. AMPS	MAX. KVA
SINGLE PHASE	120	50/60	0-140	15	2.10

UNLESS OTHERWISE SPECIFIED, TOLERANCE IS ±		UNITS		TITLE:		SPEC. CONTROL DRAWING VARIABLE TRANSFORMER MODEL: 3PN1510B			
DECIMALS	Holes	ANGLES	DRAFT	IN	MM				
.XX	.0000	.06	1°	1-1/2°		DRAWN BY	DATE	FIRST USED ON	DO NOT SCALE DWG.
.XXX	.005					S.A. SMITH	5/17/96	3PN1510B	
MATERIAL:		ALL DIMENSIONS APPLY AFTER PLATING		CHECKER		DATE	WEIGHT APPROX.	CAGE CODE	DWG. NO.
The information and design disclosed herein was originated by and is the property of STACO ENERGY PRODUCTS CO., which reserves all patent, proprietary, design, manufacturing, reproduction, use and sale rights therein, and to any article disclosed therein except to the extent rights are expressly granted to others. The foregoing does not apply to vendor proprietary parts.				ENGINEER		DATE	18 LBS	83008	031-3645
							SCALE	1=1	
							SHEET	1 OF 1	

Mouser Electronics

Authorized Distributor

Click to View Pricing, Inventory, Delivery & Lifecycle Information:

Staco:

3PN1510B