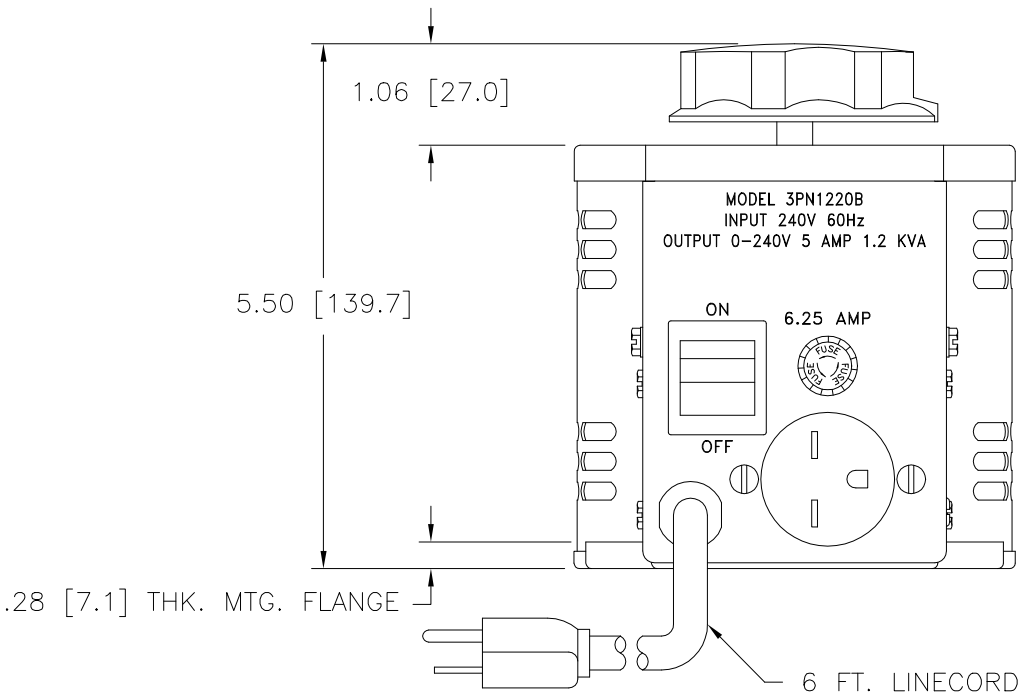
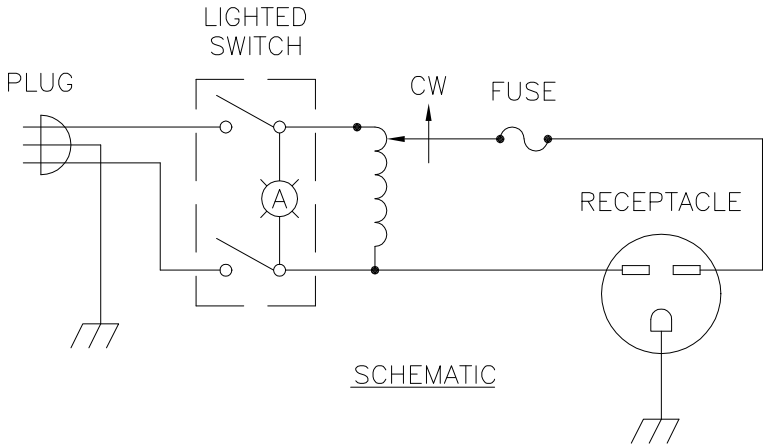
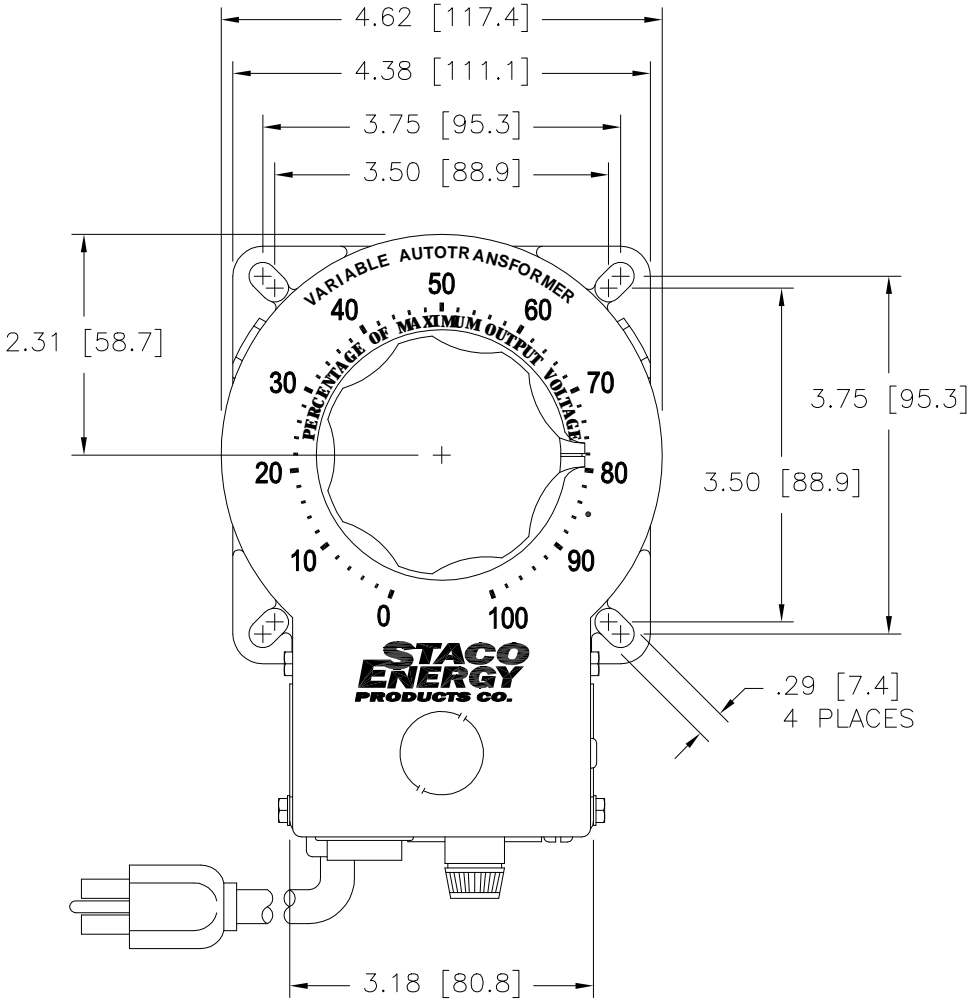
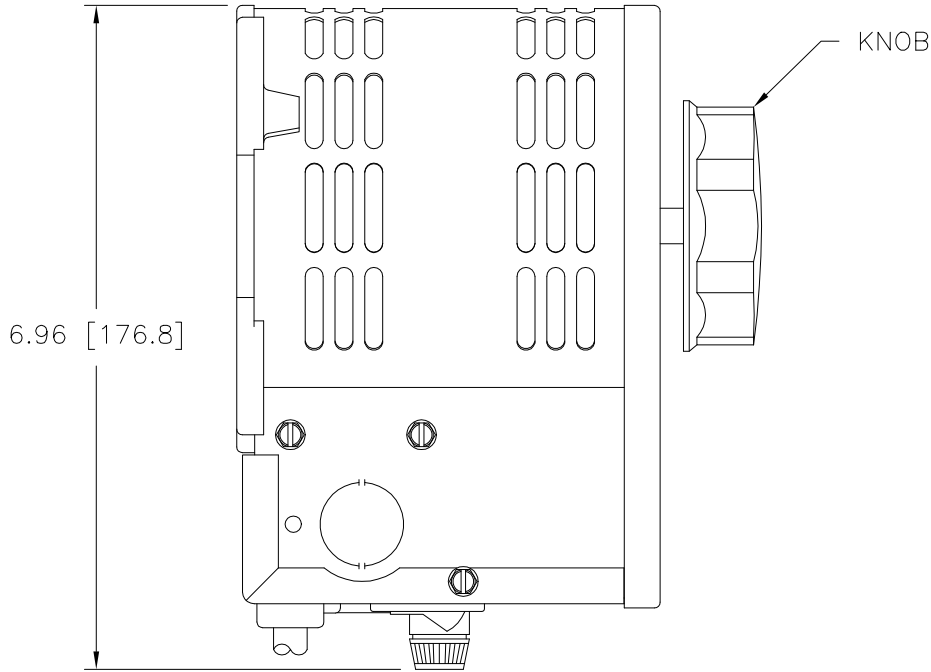


DWG. SIZE D	DWG. NO. 031-3295		
REVISIONS			
SYM.	E.C.N.	DATE	APVD.
A	24536	3/13/01	
REVISED SILKSCREEN			



SPECIFICATIONS					
WIRING	INPUT		OUTPUT		
	VOLTS	HERTZ	VOLTS	CONSTANT CURRENT LOAD	
				MAX. AMPS	MAX. KVA
SINGLE PHASE	240	60	0-240	5.0	1.2

UNLESS OTHERWISE SPECIFIED, TOLERANCE IS ±			UNITS		TITLE: SPEC. CONTROL DRAWING VARIABLE TRANSFORMER MODEL: 3PN1220B	
DECIMALS	HOLES	ANGLES	DRAFT	IN [mm]		
.XX	.0000	.06	1°	1-1/2°		
MATERIAL:			ALL DIMENSIONS APPLY AFTER PLATING			
The information and design disclosed herein was originated by and is the property of STACO ENERGY PRODUCTS CO., which reserves all patent, proprietary, design, manufacturing, reproduction, use and sale rights thereto, and to any article disclosed therein except to the extent rights are expressly granted to others. The foregoing does not apply to vendor proprietary parts.			DRAWN BY	DATE	FIRST USED ON	DO NOT SCALE DWG.
			S.A. SMITH	11/6/96	3PN1220B	
			CHECKER	DATE	WEIGHT APPROX.	CAGE CODE
			ENGINEER	DATE	10.25 LBS	83008
			SCALE		1=1	DWG. SIZE
					SHEET 1 OF 1	DWG. NO.
						031-3295

Mouser Electronics

Authorized Distributor

Click to View Pricing, Inventory, Delivery & Lifecycle Information:

Staco:

[3PN1220B](#)