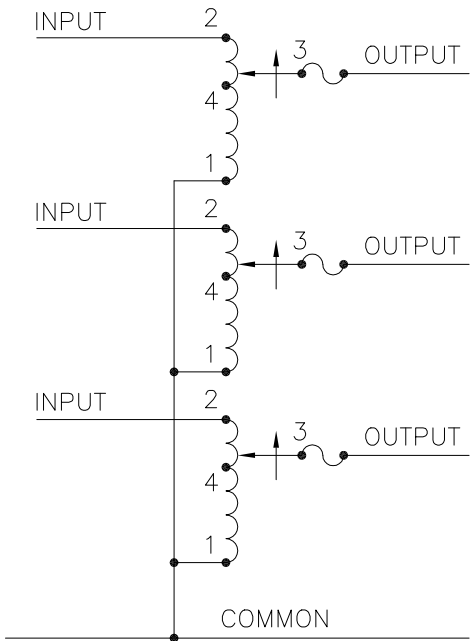
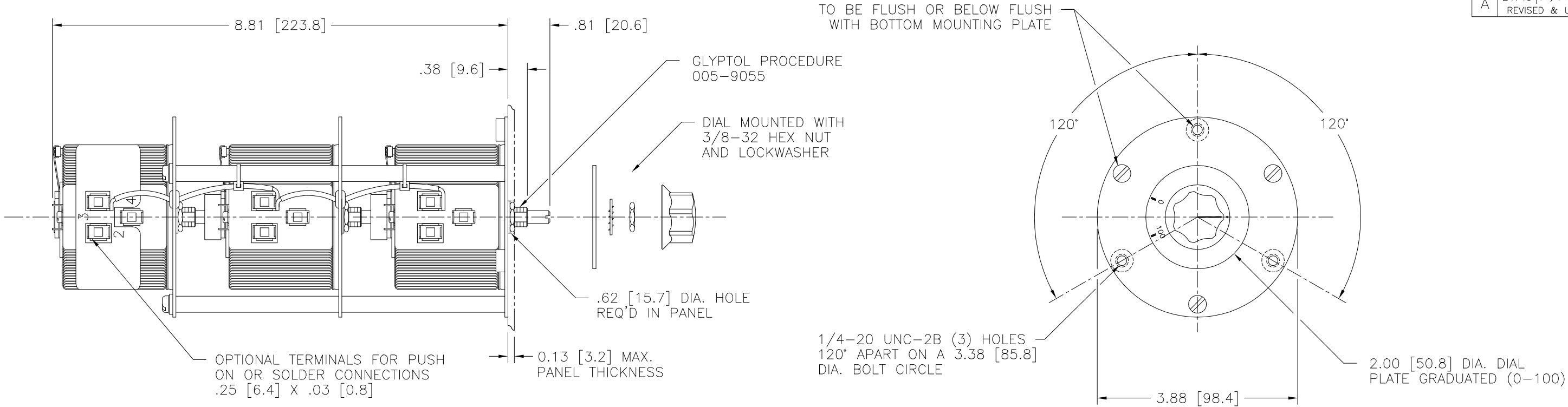


DWG. SIZE D	DWG. NO. 031-0293		
REVISIONS			
SYM.	E.C.N.	DATE	APVD.
A	24743	01/31/02	REVISED & UPDATED



SCHEMATIC

FUSE RECOMMENDED BUT NOT SUPPLIED

77 IF GANGED UNITS ARE USED IN A SYSTEM THAT ORDINARILY HAS A COMMON NEUTRAL OR GROUND BETWEEN SOURCE AND LOAD, THE NEUTRAL OR GROUND MUST BE CONNECTED TO THE COMMON TERMINALS OF THE VARIABLE TRANSFORMER ASSEMBLY. IF THE SYSTEM HAS NO NEUTRAL, THE LOAD MUST BE BALANCED OR THE TRANSFORMERS WILL BE DAMAGED.

■ JUMPERS PROVIDED IN THE STANDARD COMMON POSITION AND SHOULD BE MOVED OR REMOVED AS REQUIRED.

++ LINE TO LINE VOLTAGE.

SPECIFICATIONS												
WIRING	INPUT		OUTPUT						SHAFT ROTATION TO INCREASE VOLTAGE	TERMINAL CONNECTIONS		
	VOLTS	HERTZ	VOLTS	CONSTANT CURRENT LOAD		CONSTANT IMPEDANCE LOAD		FOR INCREASING VOLTAGE AS VIEWED FROM BASE END				
				MAX. AMPS	MAX. KVA	MAX. AMPS	MAX. KVA	INPUT		JUMPER ■	OUTPUT	
THREE PHASE WYE 77	240 ++	60	0-240	3.0	1.25	3.5	1.45	CW	2-2-2	1-1-1	3-3-3	
								CCW	1-1-1	2-2-2	3-3-3	
UNLESS OTHERWISE SPECIFIED, TOLERANCE IS ±			TITLE: SPEC. CONTROL DRAWING VARIABLE TRANSFORMER TYPE: 291-3									
DECIMALS .XX .04+.06 .002												
ANGLES 1°												
DRAFT 1-1/2°			DRAWN BY K. TOLLIVER DATE 1/02/92 FIRST USED ON DO NOT SCALE DWG.									
UNITS IN [mm]												
MATERIAL :			ALL DIMENSIONS APPLY AFTER PLATING									
The information and design disclosed herein was originated by and is the property of STACO ENERGY PRODUCTS CO., which reserves all patent, proprietary, design, manufacturing, reproduction, use and sale rights thereto, and to any article disclosed therein except to the extent rights are expressly granted to others. The foregoing does not apply to vendor proprietary parts.				CHECKER DATE		WEIGHT APPROX. 8.25 LBS.		CAGE CODE 83008		DWG. SIZE	DWG. NO.	
				ENGINEER DATE		SCALE 1 = 1		SHEET 1 OF 1		D	031-0293	

Mouser Electronics

Authorized Distributor

Click to View Pricing, Inventory, Delivery & Lifecycle Information:

Staco:

291-3