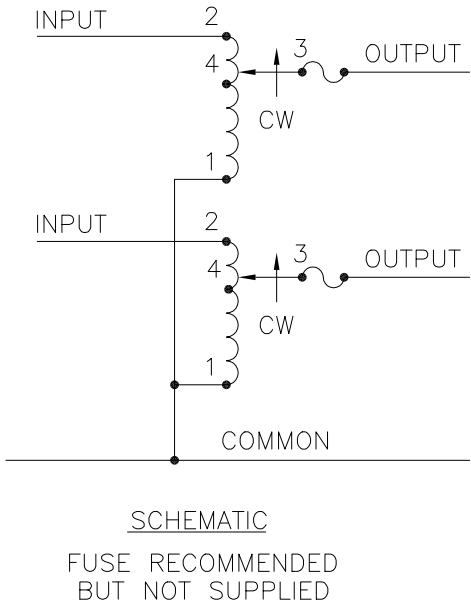
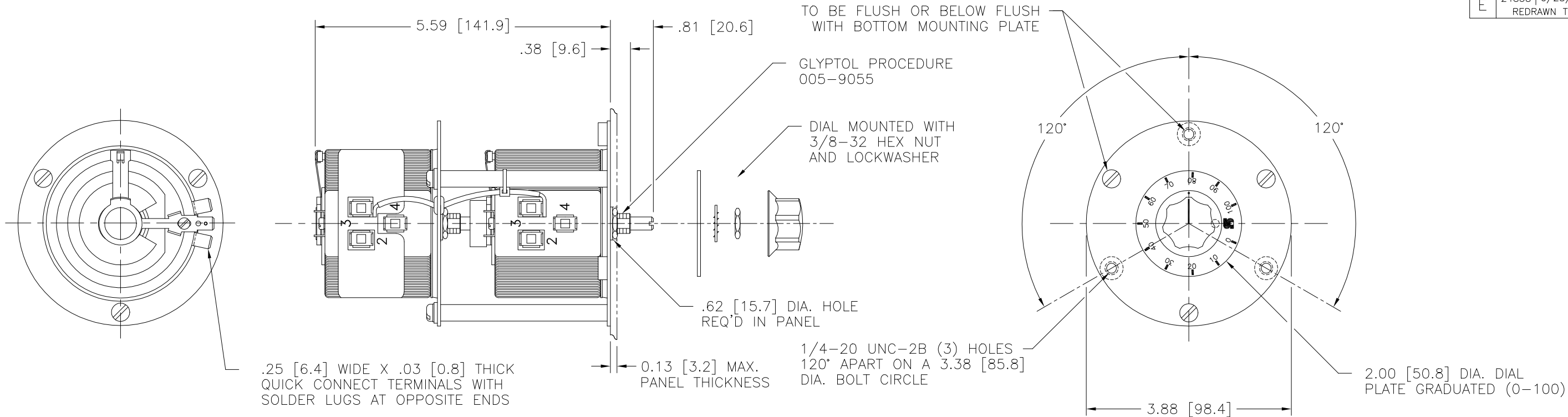


DWG. NO.	031-0292		
REVISIONS			
SYM.	E.C.N.	DATE	APVD.
E	24858	6/25/02	
REDRAWN TO CAD			



- ++ LINE TO LINE VOLTAGE
- ⌞ IF GANGED UNITS ARE USED IN A SYSTEM THAT ORDINARILY HAS A COMMON NEUTRAL OR GROUND BETWEEN SOURCE AND LOAD, THE NEUTRAL OR GROUND MUST BE CONNECTED TO THE COMMON TERMINALS OF THE VARIABLE TRANSFORMER ASSEMBLY. IF THE SYSTEM HAS NO NEUTRAL, THE LOAD MUST BE BALANCED OR THE TRANSFORMERS WILL BE DAMAGED.
- JUMPER PROVIDED IN THE STANDARD COMMON POSITION AND SHOULD BE MOVED OR REMOVED AS REQUIRED.

SPECIFICATIONS															
WIRING	INPUT		OUTPUT					SHAFT ROTATION TO INCREASE VOLTAGE	TERMINAL CONNECTIONS						
	VOLTS	HERTZ	VOLTS	CONSTANT CURRENT LOAD		CONSTANT IMPEDANCE LOAD			FOR INCREASING VOLTAGE AS VIEWED FROM BASE END						
				MAX. AMPS	MAX. KVA	MAX. AMPS	MAX. KVA		INPUT	JUMPER	OUTPUT				
SINGLE PHASE SERIES	240	50/60	0-240	3.0	0.72	3.5	0.84	CW	2-2	1-1	3-3				
		60	0-264	3.0	0.79	-	-	CCW	1-1	2-2	3-3				
THREE PHASE OPEN DELTA	120 ++	50/60	0-120	3.0	0.62	3.5	0.73	CW	2-1-2	1-1	3-1-3				
		60	0-132	3.0	0.69	-	-	CCW	1-2-1	2-2	3-2-3				
UNLESS OTHERWISE SPECIFIED, TOLERANCE IS ±															
DECIMALS .006 .002			HOLES 1°			DRAFT 1-1/2°			UNITS IN [mm]						
MATERIAL :			ALL DIMENSIONS APPLY AFTER PLATING			TITLE: SPEC. CONTROL DRAWING VARIABLE TRANSFORMER TYPE: 291-2									
The information and design disclosed herein was originated by and is the property of STACO ENERGY PRODUCTS CO., which reserves all patent, proprietary, design, manufacturing, reproduction, use and sale rights thereto, and to any article disclosed therein except to the extent rights are expressly granted to others. The foregoing does not apply to vendor proprietary parts.						DRAWN BY TIM RAU		DATE 6/6/02		FIRST USED ON		DO NOT SCALE DWG.			
						CHECKER		DATE		WEIGHT APPROX. 5.50 LBS.		CAGE CODE 83008		DWG. NO.	
						ENGINEER		DATE		SCALE 1=1		SHEET 1 OF 1		D 031-0292	

Mouser Electronics

Authorized Distributor

Click to View Pricing, Inventory, Delivery & Lifecycle Information:

Staco:

291-2