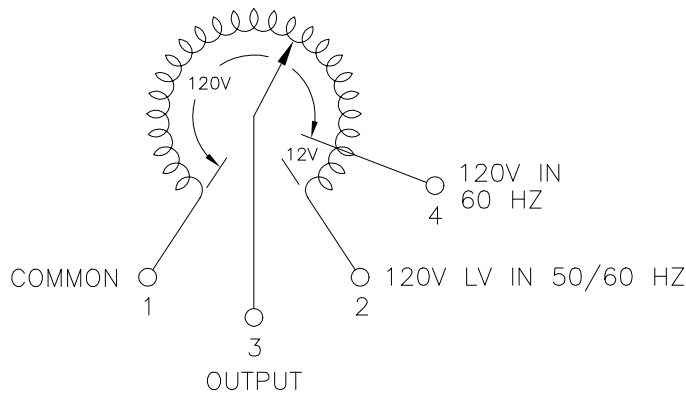
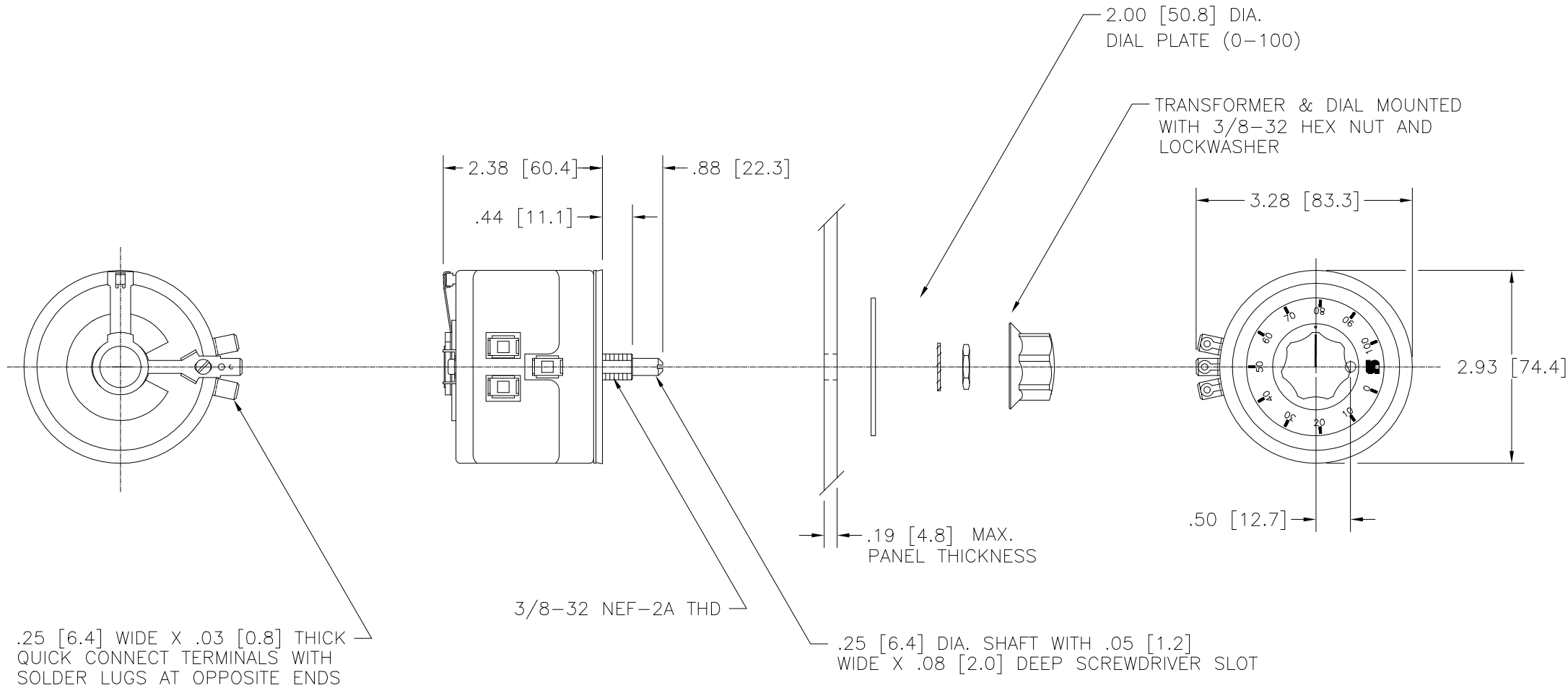
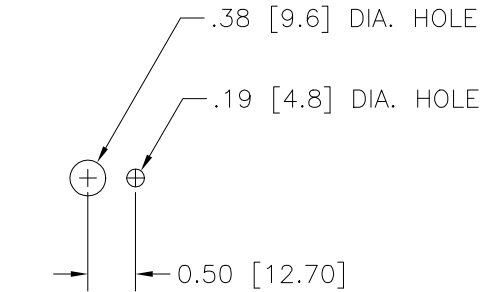



DWG. SIZE D	DWG. NO. 031-0291		
REVISIONS			
SYM.	E.C.N.	DATE	APVD.
G	21877	6/11/92	
REDRAWN REV. KNOB			



SCHEMATIC
VIEWED FROM BASE END



PANEL MTG. DETAIL

SPECIFICATIONS												
WIRING	INPUT		OUTPUT						SHAFT ROTATION TO INCREASE VOLTAGE	TERMINAL CONNECTIONS		
	VOLTS	HERTZ	VOLTS	CONSTANT CURRENT LOAD		CONSTANT IMPEDANCE LOAD		FOR INCREASING VOLTAGE AS VIEWED FROM BASE END				
				MAX. AMPS	MAX. KVA	MAX. AMPS	MAX. KVA	INPUT		JUMPER	OUTPUT	
SINGLE PHASE	120	50/60	0-120	3.0	0.36	3.5	0.42	CW	1-2	——	1-3	
		60	0-132	3.0	0.40	——	——	CCW	1-2	——	2-3	
								CW	1-4	——	1-3	
UNLESS OTHERWISE SPECIFIED, TOLERANCE IS ± DECIMALS HOLES ANGLES DRAFT - .001- .010 .06- .002- 1° 1-1/2° - .001- .005				TITEL: SPECIFICATION CONTROL DWG. VARIABLE TRANSFORMER TYPE: 291				 STACO ENERGY PRODUCTS CO. DAYTON, OHIO U.S.A.				
MATERIAL: _____				ALL DIMENSIONS APPLY AFTER PLATING								
The information and design disclosed herein was originated by and is the property of STACO ENERGY PRODUCTS CO., which reserves all patent, proprietary, design, manufacturing, reproduction, use and sale rights thereto, and to any article disclosed therein except to the extent rights are expressly granted to others. The foregoing does not apply to vendor proprietary parts.												
DRAWN BY K. TOLLIVER			DATE 8/23/91		FIRST USED ON 031-0291			DO NOT SCALE DWG.		CUSTOMER APPROVAL		DATE
CHECKER			DATE		WEIGHT APPROX.			CODE IDENT. NO. 83008		DWG. SIZE		DWG. NO.
ENGINEER			DATE		SCALE FULL			SHEET 1 OF 1		D		031-0291



Mouser Electronics

Authorized Distributor

Click to View Pricing, Inventory, Delivery & Lifecycle Information:

Staco:

291