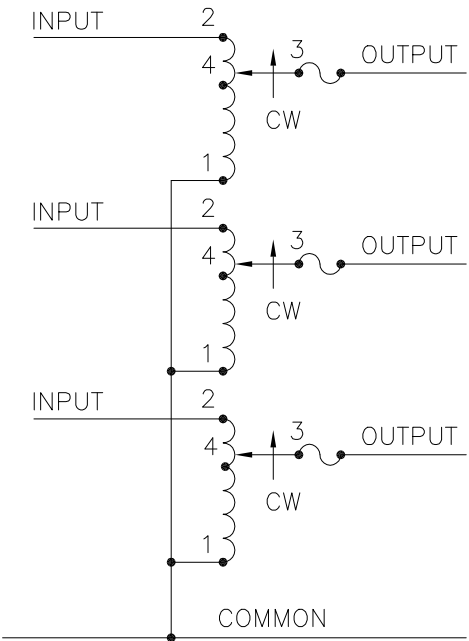
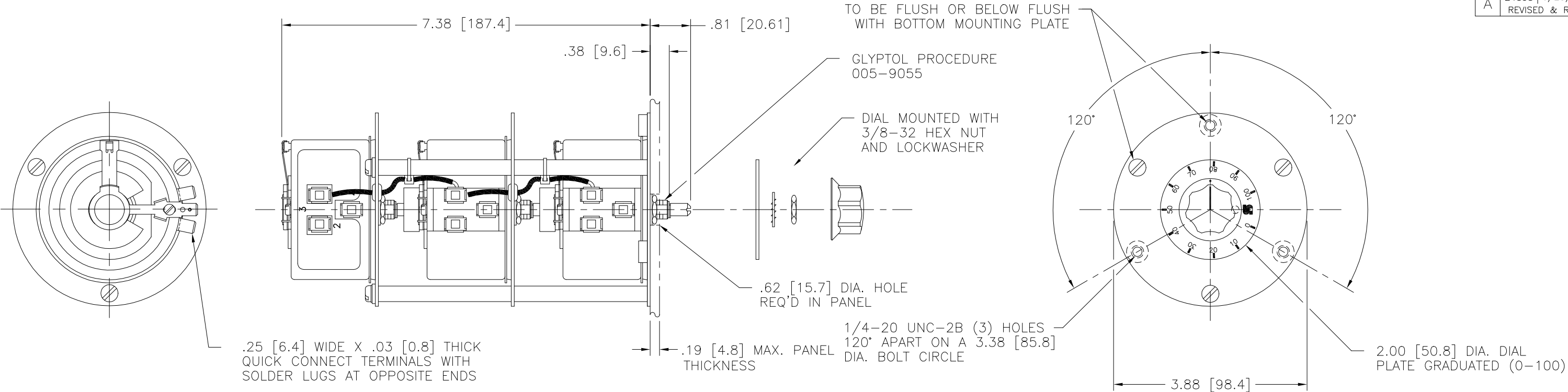


DWG. SIZE D	DWG. NO. 031-0203		
REVISIONS			
SYM.	E.C.N.	DATE	APVD.
A	24858	6/25/02	
REVISED & REDRAWN			



- ++ LINE TO LINE VOLTAGE
- IF GANGED UNITS ARE USED IN A SYSTEM THAT ORDINARILY HAS A COMMON NEUTRAL OR GROUND BETWEEN SOURCE AND LOAD, THE NEUTRAL OR GROUND MUST BE CONNECTED TO THE COMMON TERMINALS OF THE VARIABLE TRANSFORMER ASSEMBLY. IF THE SYSTEM HAS NO NEUTRAL, THE LOAD MUST BE BALANCED OR THE TRANSFORMERS WILL BE DAMAGED.
- JUMPER PROVIDED IN THE STANDARD COMMON POSITION AND SHOULD BE MOVED OR REMOVED AS REQUIRED.

SPECIFICATIONS												
WIRING	INPUT		OUTPUT					SHAFT ROTATION TO INCREASE VOLTAGE	TERMINAL CONNECTIONS			
	VOLTS	HERTZ	VOLTS	CONSTANT CURRENT LOAD		CONSTANT IMPEDANCE LOAD			FOR INCREASING VOLTAGE AS VIEWED FROM BASE END			
				MAX. AMPS	MAX. KVA	MAX. AMPS	MAX. KVA		INPUT	JUMPER ■	OUTPUT	
THREE PHASE WYE <i>W</i>	240 ++	60	0-240	2.0	0.83	2.5	1.04	CW	2-2-2	1-1-1	3-3-3	
								CCW	1-1-1	2-2-2	3-3-3	
UNLESS OTHERWISE SPECIFIED, TOLERANCE IS ±			TITL:		SPEC. CONTROL DRAWING VARIABLE TRANSFORMER TYPE: 201-3							
DECIMALS   HOLES   ANGLES   DRAFT			UNITS									
.XX   .040   1°   1-1/2°			IN [mm]									
MATERIAL :			ALL DIMENSIONS APPLY AFTER PLATING									
The information and design disclosed herein was originated by and is the property of STACO ENERGY PRODUCTS CO., which reserves all patent, proprietary, design, manufacturing, reproduction, use and sale rights thereto, and to any article disclosed therein except to the extent rights are expressly granted to others. The foregoing does not apply to vendor proprietary parts.					DRAWN BY TIM RAU		DATE 6/6/02		FIRST USED ON		DO NOT SCALE DWG.	
					CHECKER		DATE		WEIGHT APPROX. 6.5 LBS.		CAGE CODE 83008	
					ENGINEER		DATE		SCALE 1 = 1		SHEET 1 OF 1	
									DWG. SIZE D		DWG. NO. 031-0203	

# Mouser Electronics

Authorized Distributor

Click to View Pricing, Inventory, Delivery & Lifecycle Information:

[Staco:](#)

[201-3](#)