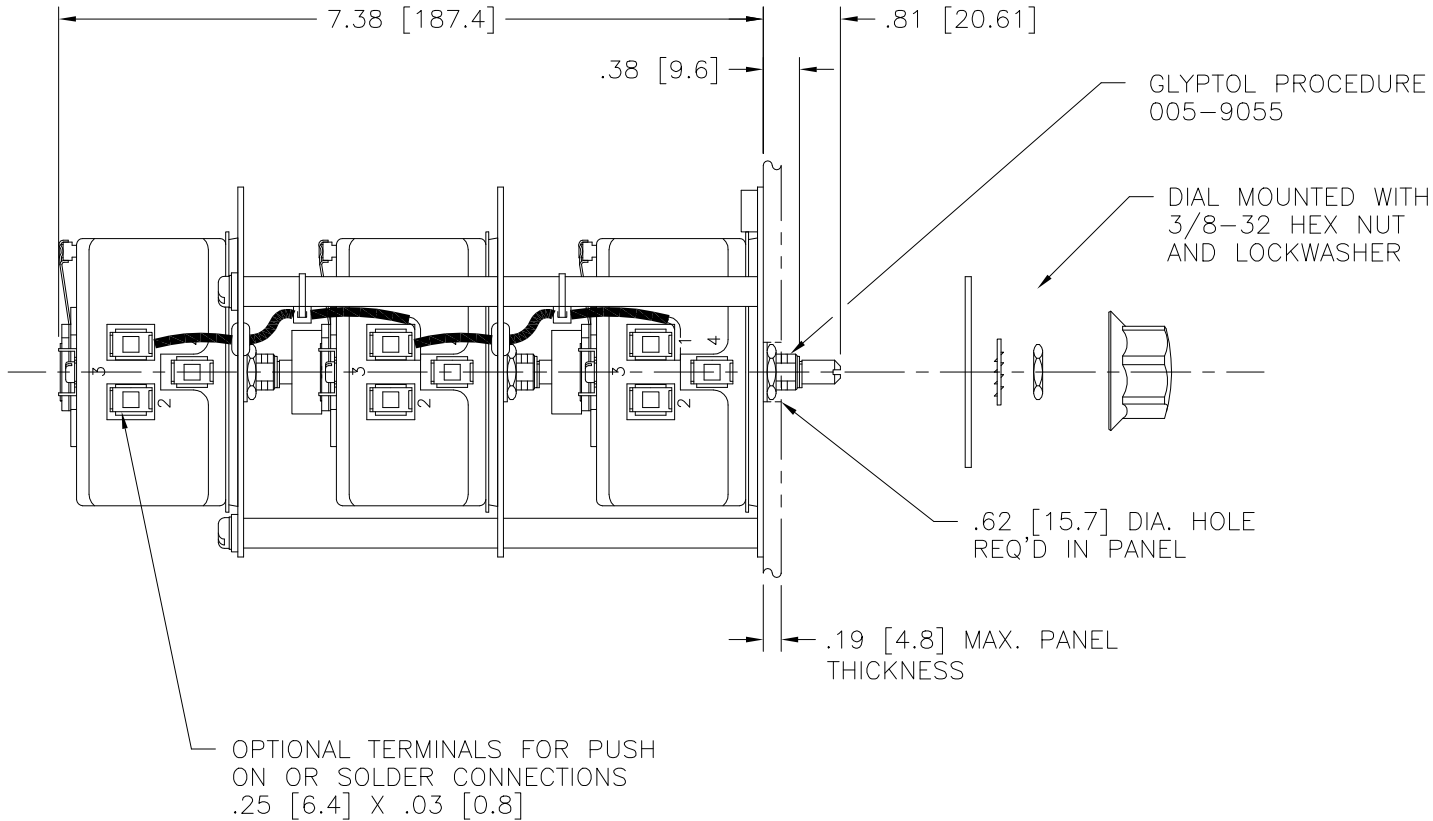
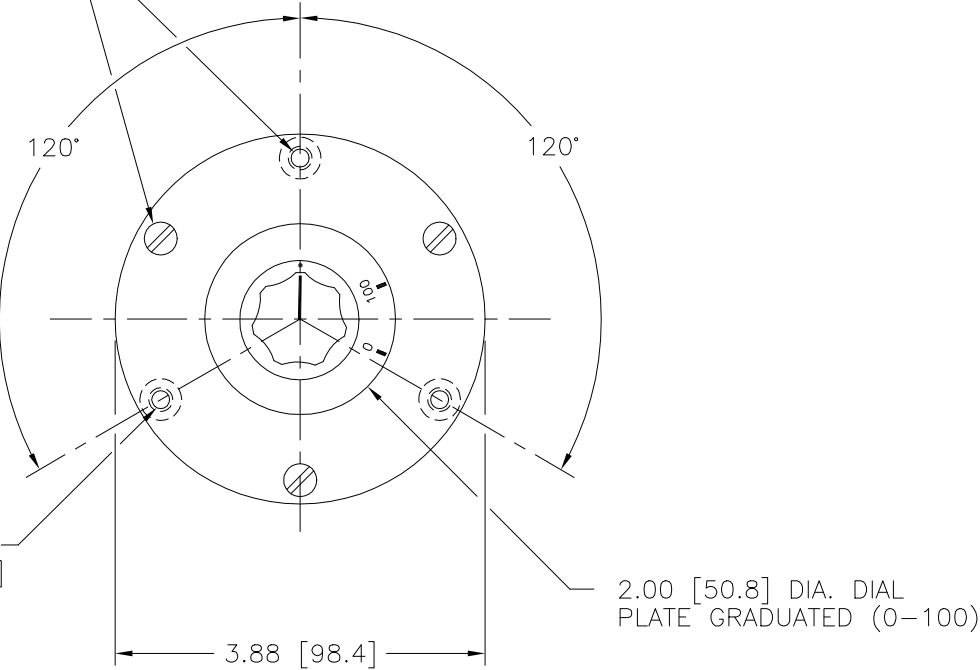


DWG. NO.	031-0125		
REVISIONS			
SYM.	E.C.N.	DATE	APVD.
A	23648	12/31/97	REVISED & REDRAWN



TO BE FLUSH OR BELOW FLUSH WITH BOTTOM MOUNTING PLATE

1/4-20 UNC-2B (3) HOLES 120° APART ON A 3.38 [85.8] DIA. BOLT CIRCLE

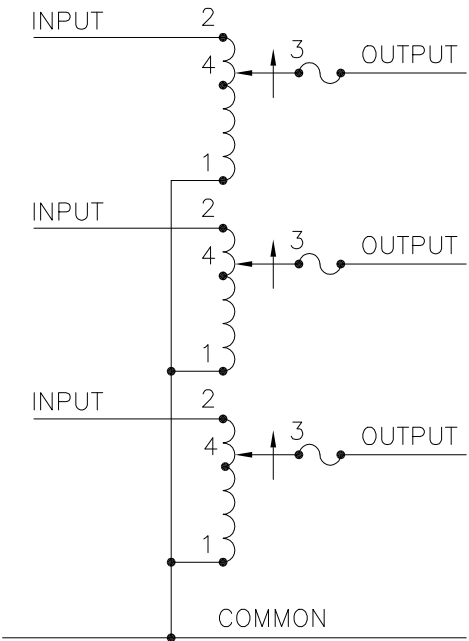


NOTES:


1. MAXIMUM AMBIENT TEMPERATURE 50°C
2. VENTILATION MUST BE PROVIDED WHEN USED IN AN ENCLOSURE.

SPECIFICATIONS:

- ++ LINE TO LINE VOLTAGE
- ⌋ IF GANGED UNITS ARE USED IN A SYSTEM THAT ORDINARILY HAS A COMMON NEUTRAL OR GROUND BETWEEN SOURCE AND LOAD, THE NEUTRAL OR GROUND MUST BE CONNECTED TO THE COMMON TERMINALS OF THE VARIABLE TRANSFORMER ASSEMBLY. IF THE SYSTEM HAS NO NEUTRAL, THE LOAD MUST BE BALANCED OR THE TRANSFORMERS WILL BE DAMAGED.
- JUMPER PROVIDED IN THE STANDARD COMMON POSITION AND SHOULD BE MOVED OR REMOVED AS REQUIRED.



SCHEMATIC
FUSE RECOMMENDED BUT NOT SUPPLIED

SPECIFICATIONS													
WIRING	INPUT		OUTPUT					SHAFT ROTATION TO INCREASE VOLTAGE	TERMINAL CONNECTIONS				
	VOLTS	HERTZ	VOLTS	CONSTANT CURRENT LOAD		CONSTANT IMPEDANCE LOAD			FOR INCREASING VOLTAGE AS VIEWED FROM BASE END				
				MAX. AMPS	MAX. KVA	MAX. AMPS	MAX. KVA		INPUT	JUMPER ■	OUTPUT		
THREE PHASE WYE <i>W</i>	240 ++	60	0-240	1.75	0.73	2.2	0.92	CW	2-2-2	1-1-1	3-3-3		
								CCW	1-1-1	2-2-2	3-3-3		
UNLESS OTHERWISE SPECIFIED, TOLERANCE IS ±				TITLE: SPEC. CONTROL DRAWING VARIABLE TRANSFORMER TYPE: 171-3									
DECIMALS .XX .005													
ANGLES 1°													
DRAFT 1-1/2°													
UNITS IN [mm]				ALL DIMENSIONS APPLY AFTER PLATING				CUSTOMER APPROVAL					
MATERIAL :													
The information and design disclosed herein was originated by and is the property of STACO ENERGY PRODUCTS CO., which reserves all patent, proprietary, design, manufacturing, reproduction, use and sale rights thereto, and to any article disclosed therein except to the extent rights are expressly granted to others. The foregoing does not apply to vendor proprietary parts.				DRAWN BY TIM RAU		DATE 12/29/97		FIRST USED ON		DO NOT SCALE DWG.			
				CHECKER		DATE		WEIGHT APPROX. 6.5 LBS.		CODE IDENT. NO. 83008		DWG. NO.	
				ENGINEER		DATE		SCALE 1 = 1		SHEET 1 OF 1		D 031-0125	

Mouser Electronics

Authorized Distributor

Click to View Pricing, Inventory, Delivery & Lifecycle Information:

Staco:

171-3