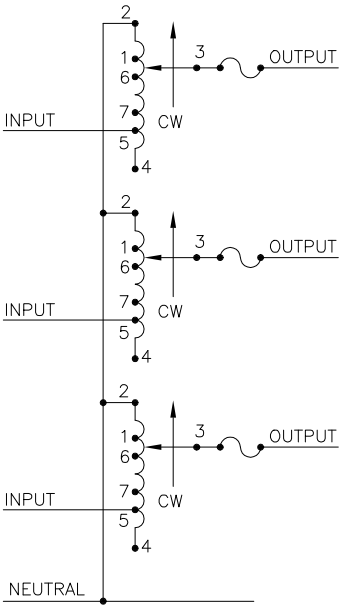
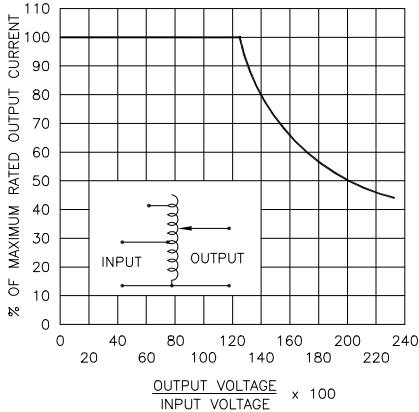
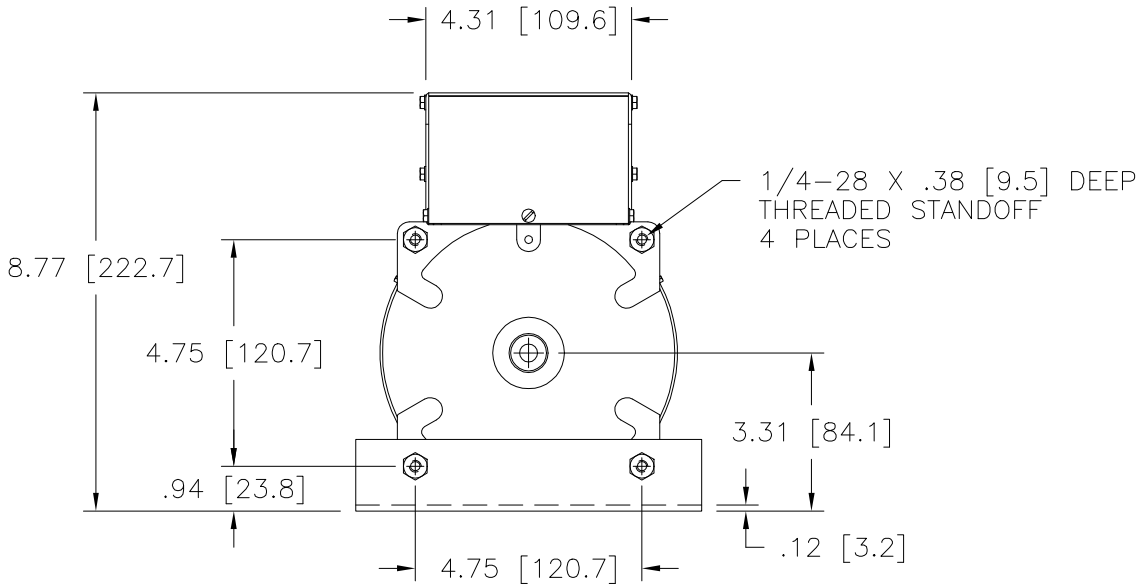


NOTE:  
UNIT IS SUPPLIED WITH A 3.50 [95.2] DIA.  
0-100 GRADUATED DIAL PLATE FOR PANEL MOUNTING.



SCHEMATIC  
THREE PHASE WYE  
FUSES RECOMMENDED BUT NOT SUPPLIED




# MAXIMUM OUTPUT CURRENT IN OUTPUT VOLTAGE RANGE FROM 0 TO 25% ABOVE LINE VOLTAGE. AT HIGHER OUTPUT VOLTAGES, THE OUTPUT CURRENT MUST BE REDUCED ACCORDING TO THE DERATING CURVE FIGURE A.

§ MAXIMUM KVA AT MAXIMUM OUTPUT VOLTAGE AND CORRESPONDING DERATED OUTPUT CURRENT. MAXIMUM KVA FOR LOWER VOLTAGES MAY BE CALCULATED FROM DERATING CURVE FIGURE A.

++ LINE TO LINE VOLTAGE.

π IF GANGED UNITS ARE USED IN A SYSTEM THAT ORDINARILY HAS A COMMON NEUTRAL OR GROUND BETWEEN SOURCE AND LOAD, THE NEUTRAL OR GROUND MUST BE CONNECTED TO THE COMMON TERMINALS OF THE VARIABLE TRANSFORMER ASSEMBLY. IF THE SYSTEM HAS NO NEUTRAL, THE LOAD MUST BE BALANCED OR THE TRANSFORMER WILL BE DAMAGED.

■ JUMPER PROVIDED IN STANDARD COMMON POSITION AND SHOULD BE MOVED OR REMOVED AS REQUIRED.

SPECIFICATIONS																		
WIRING	INPUT		OUTPUT				SHAFT ROTATION TO INCREASE VOLTAGE	TERMINAL CONNECTIONS										
	VOLTS	HERTZ	VOLTS	CONSTANT CURRENT LOAD		CONSTANT IMPEDANCE LOAD		FOR INCREASING VOLTAGE AS VIEWED FROM BASE END ■										
				MAX. AMPS	MAX. KVA	MAX. AMPS		MAX. KVA	INPUT	JUMPER	OUTPUT							
THREE PHASE WYE Π	480 ++	50/60	0-480	9.5	7.90	12	10	CW	2-2-2	4-4-4	3-3-3							
								CCW	4-4-4	2-2-2	3-3-3							
	60	0-560	9.5	9.21	—	—	CW	1-1-1	4-4-4	3-3-3								
								CCW	5-5-5	2-2-2	3-3-3							
	240 ++	60	0-560	9.5#	3.96 §	—	—	CW	7-7-7	4-4-4	3-3-3							
								CCW	6-6-6	2-2-2	3-3-3							
UNLESS OTHERWISE SPECIFIED, TOLERANCE IS ± DECIMALS .06 Holes .01 ANGLES 1° DRAFT 1-1/2°				UNITS IN [mm]			TITLE: SPEC. CONTROL DRAWING VARIABLE TRANSFORMER MODEL: 1520CT-3											
MATERIAL:				ALL DIMENSIONS APPLY AFTER PLATING														
																		
The information and design disclosed herein was originated by and is the property of STACO ENERGY PRODUCTS CO., which reserves all patent, proprietary, design, manufacturing, reproduction, use and sale rights thereto, and to any article disclosed therein except to the extent rights are expressly granted to others. The foregoing does not apply to vendor proprietary parts.							DRAWN BY S.A. SMITH		DATE 3/6/97		FIRST USED ON 1520CT-3		DO NOT SCALE DWG.		CUSTOMER APPROVAL		DATE	
							CHECKER		DATE		WEIGHT APPROX. 66 LBS		CODE IDENT. NO. 83008		DWG. SIZE		DWG. NO.	
							ENGINEER		DATE		SCALE .50=1		SHEET 1 OF 1		D		031-3975	

# Mouser Electronics

Authorized Distributor

Click to View Pricing, Inventory, Delivery & Lifecycle Information:

Staco:

1520CT-3