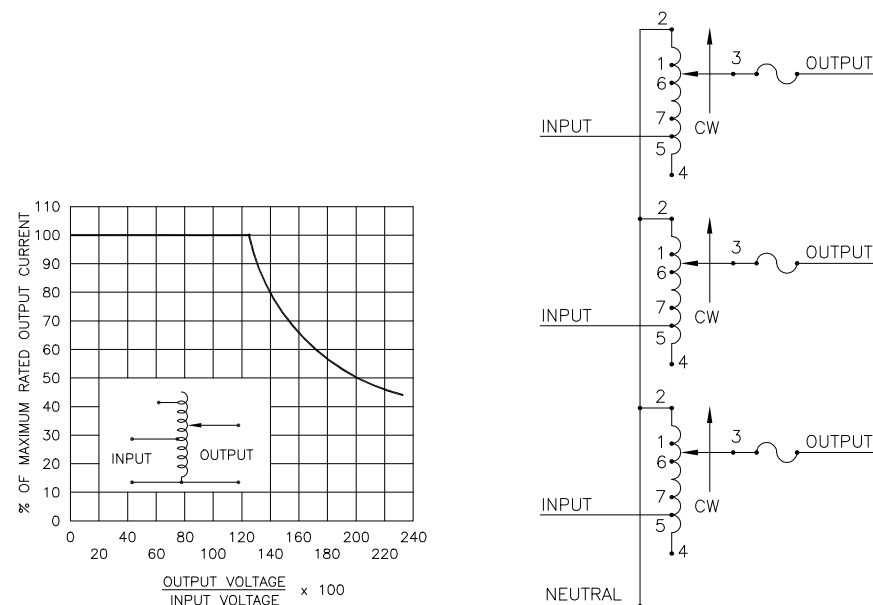
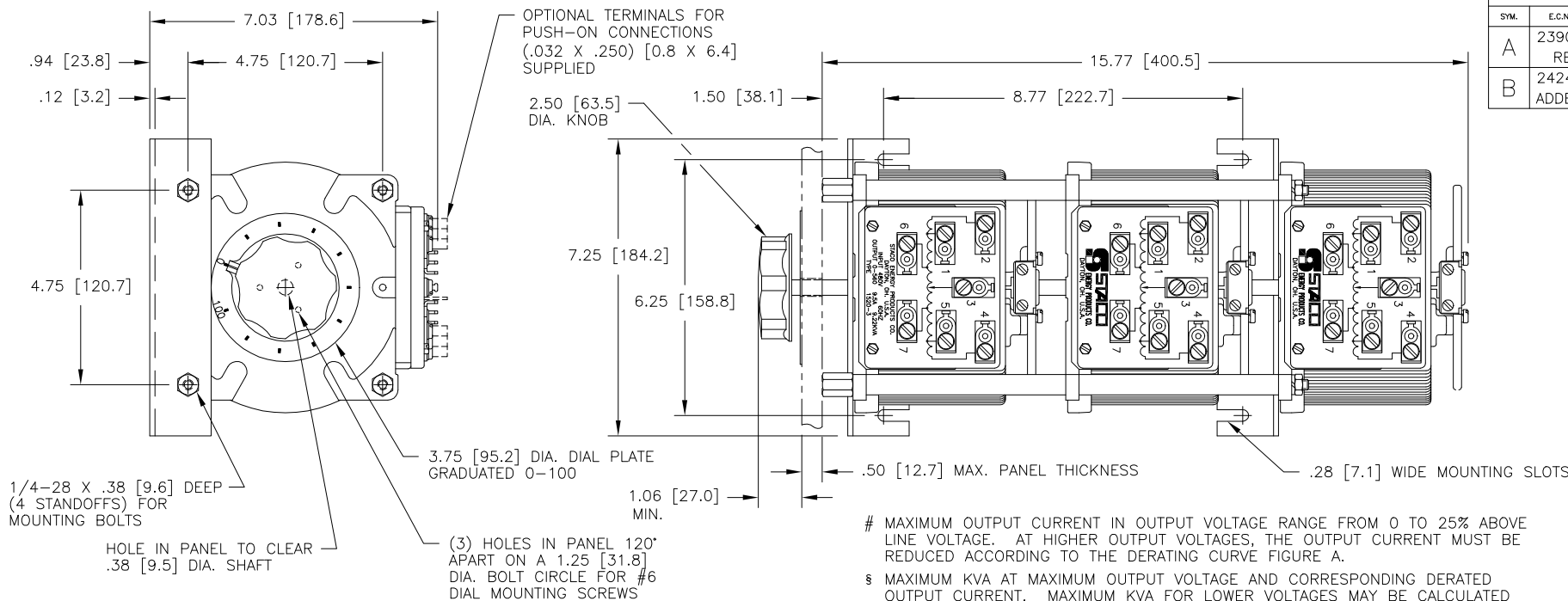


DWG. NO.	031-3925		
SYMBOL	E.C.N.	DATE	APVD.
A	23902	12/17/98	REDRAWN ON CAD
B	24244	5/23/00	ADDED OPTIONAL NOTE



SPECIFICATIONS																	
WIRING	INPUT		OUTPUT					SHAFT ROTATION TO INCREASE VOLTAGE	TERMINAL CONNECTIONS								
	VOLTS	HERTZ	VOLTS	CONSTANT CURRENT LOAD		CONSTANT IMPEDANCE LOAD			FOR INCREASING VOLTAGE AS VIEWED FROM BASE END ■								
				MAX. AMPS	MAX. KVA	MAX. AMPS	MAX. KVA		INPUT	JUMPER	OUTPUT						
THREE PHASE WYE Π	480 ++	50/60	0-480	9.5	7.90	12	10	CW	2-2-2	4-4-4	3-3-3						
								CCW	4-4-4	2-2-2	3-3-3						
	60	0-560	9.5	9.21	—	—	CW	1-1-1	4-4-4	3-3-3							
								CCW	5-5-5	2-2-2	3-3-3						
	240 ++	60	0-560	9.5#	3.96 S	—	—	CW	7-7-7	4-4-4	3-3-3						
								CCW	6-6-6	2-2-2	3-3-3						
UNLESS OTHERWISE SPECIFIED, TOLERANCE IS ±			TITLES:		SPEC. CONTROL DWG. VARIABLE TRANSFORMER MODEL: 1520-3												
DECIMALS .001		HOLES .002	ANGLES 1°	DRAFT 1-1/2"							UNITS IN [mm]						
MATERIAL: .005		ALL DIMENSIONS APPLY AFTER PLATING															
The information and design disclosed herein was originated by and is the property of STACO ENERGY PRODUCTS CO., which reserves all patent, proprietary, design, manufacturing, reproduction, use and sale rights thereto, and to any article disclosed therein except to the extent rights are expressly granted to others. The foregoing does not apply to vendor proprietary parts.					DRAWN BY S.A. SMITH		DATE 12/17/98		FIRST USED ON		DO NOT SCALE DWG.		CUSTOMER APPROVAL		DATE		
						CHECKER		DATE		WEIGHT APPROX. 66 LBS		CODE IDENT. NO. 83008		DWG. NO.		DWG. NO.	
						ENGINEER		DATE		SCALE 5=1		SHEET 1 OF 1		C		031-3925	



# Mouser Electronics

Authorized Distributor

Click to View Pricing, Inventory, Delivery & Lifecycle Information:

Staco:

1520-3