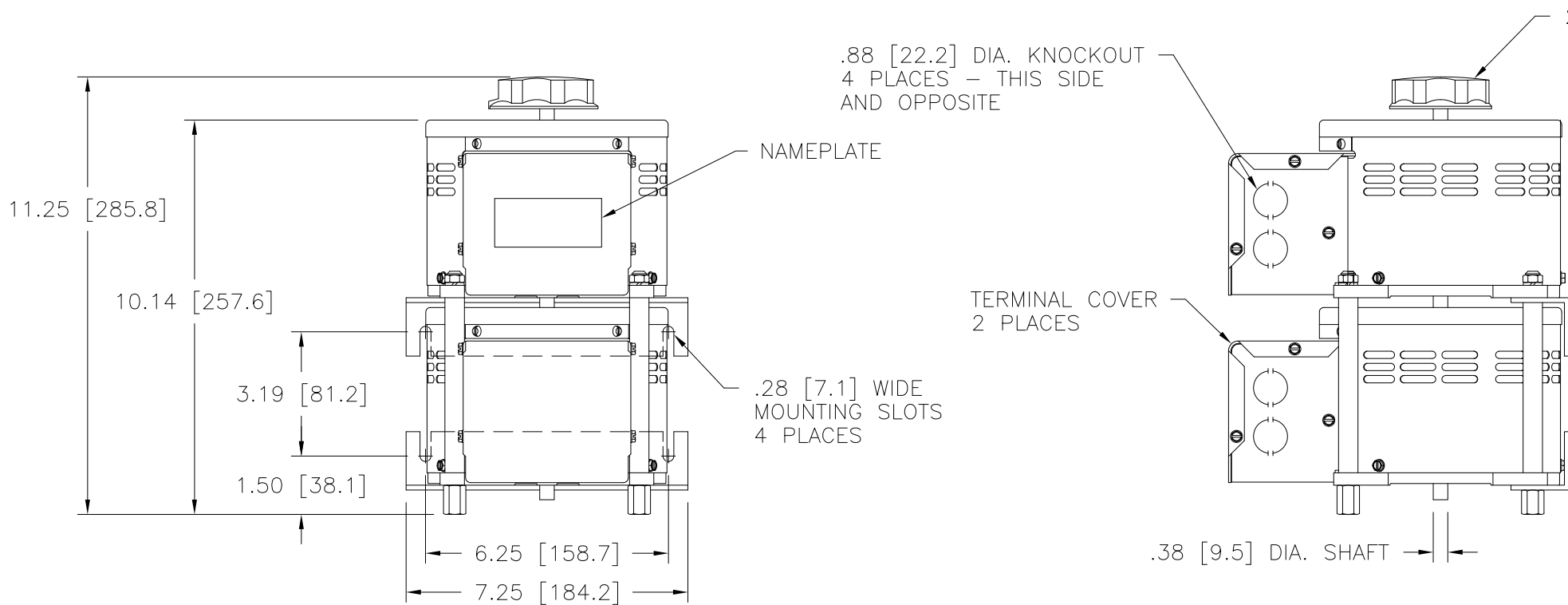
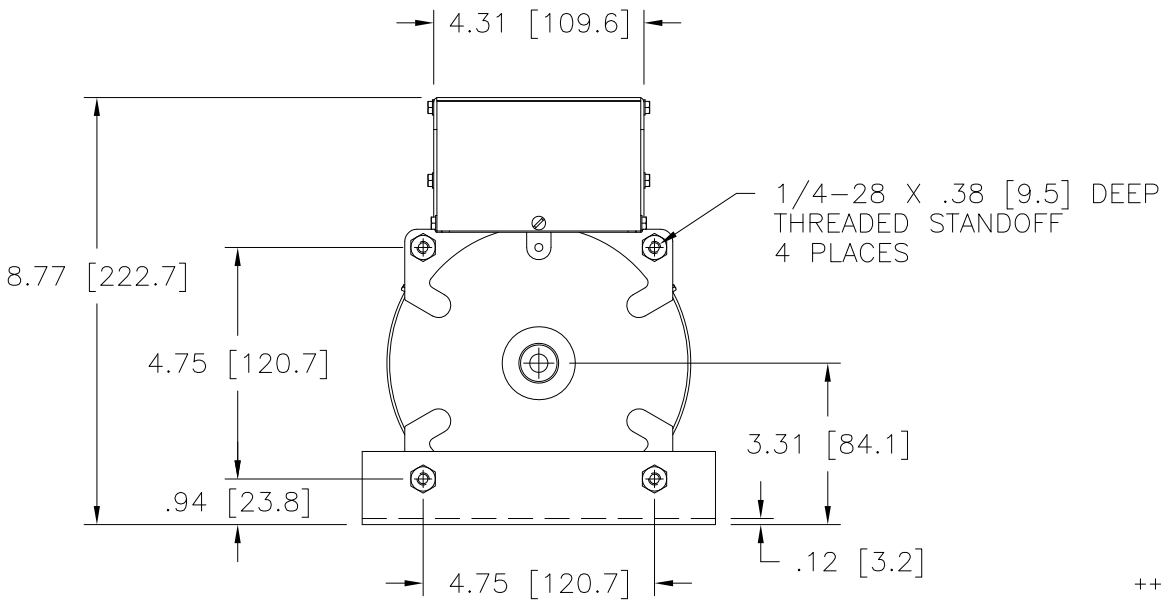
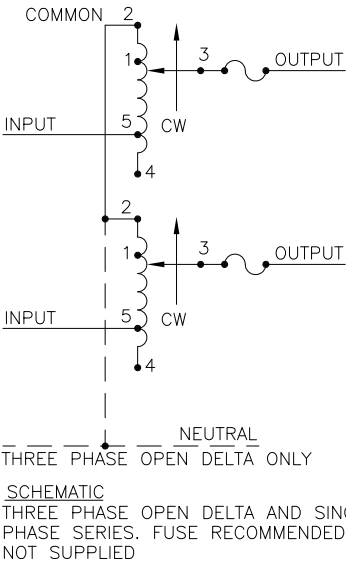


DWG. SIZE D	DWG. NO. 031-3663		
REVISIONS			
SYM.	E.C.N.	DATE	APVD.
A	25804 ADDED	10/16/06 CSA LOGO	NOTE
B	28069 DELETE	12/5/14 CSA LOGO	NOTE




NOTE:  
UNIT IS SUPPLIED WITH A 3.75 [95.2] DIA. 0-100 GRADUATED  
DIAL PLATE FOR PANEL MOUNTING.



++ LINE TO LINE VOLTAGE.

⌈ IF GANGED UNITS ARE USED IN A SYSTEM THAT ORDINARILY HAS A COMMON  
NEUTRAL OR GROUND BETWEEN SOURCE AND LOAD, THE NEUTRAL OR GROUND  
MUST BE CONNECTED TO THE COMMON TERMINALS OF THE VARIABLE TRANSFORMER  
ASSEMBLY. IF THE SYSTEM HAS NO NEUTRAL, THE LOAD MUST BE BALANCED OR  
THE TRANSFORMER WILL BE DAMAGED.

■ JUMPER PROVIDED IN STANDARD COMMON POSITION AND SHOULD BE MOVED OR  
REMOVED AS REQUIRED.

SPECIFICATIONS																	
WIRING	INPUT		OUTPUT				SHAFT ROTATION TO INCREASE VOLTAGE	TERMINAL CONNECTIONS									
	VOLTS	HERTZ	VOLTS	CONSTANT CURRENT LOAD		CONSTANT IMPEDANCE LOAD		MOTOR DRIVEN UNITS USE CCW FOR INCREASING VOLTAGE AS VIEWED FROM BASE END ■									
				MAX. AMPS	MAX. KVA	MAX. AMPS		MAX. KVA	INPUT	JUMPER	OUTPUT						
SINGLE PHASE SERIES	240	50/60	0-240	15	3.60	20	4.80	CW	2-2	4-4	3-3						
									CCW	4-4	2-2	3-3					
			0-280	15	4.20	—	—	CW	1-1	4-4	3-3						
								CCW	5-5	2-2	3-3						
THREE PHASE OPEN DELTA Π	120 ++	50/60	0-120	15	3.12	20	4.15	CW	2-4-2	4-4	3-4-3						
								CCW	4-2-4	2-2	3-2-3						
			0-140	15	3.64	—	—	CW	1-4-1	4-4	3-4-3						
								CCW	5-2-5	2-2	3-2-3						
UNLESS OTHERWISE SPECIFIED, TOLERANCE IS ± DECIMALS HOLE .0005 .06 .0005 .01 XX .0005 .06 .0005 .01 ANGLES 1° 1-1/2°			UNITS IN [mm]		TITLE: SPEC. CONTROL DRAWING VARIABLE TRANSFORMER MODEL: 1510CT-2			 A Components Corporation of America Company 301 Gaddis Boulevard Dayton, Ohio 45403 USA									
MATERIAL :		ALL DIMENSIONS APPLY AFTER PLATING															
The information and design disclosed herein was originated by and is the property of STACO ENERGY PRODUCTS CO., which reserves all patent, proprietary, design, manufacturing, reproduction, use and sale rights thereto, and to any article disclosed therein except to the extent rights are expressly granted to others. The foregoing does not apply to vendor proprietary parts.						DRAWN BY S.A. SMITH		DATE 2/5/99		FIRST USED ON 1510CT-2		DO NOT SCALE DWG.					
						CHECKER		DATE		WEIGHT APPROX. 35.25 LBS		CAGE CODE 83008		DWG. SIZE D		DWG. NO. 031-3663	
						ENGINEER		DATE		SCALE .50=1		SHEET 1 of 1					

# Mouser Electronics

Authorized Distributor

Click to View Pricing, Inventory, Delivery & Lifecycle Information:

Staco:

1510CT-2