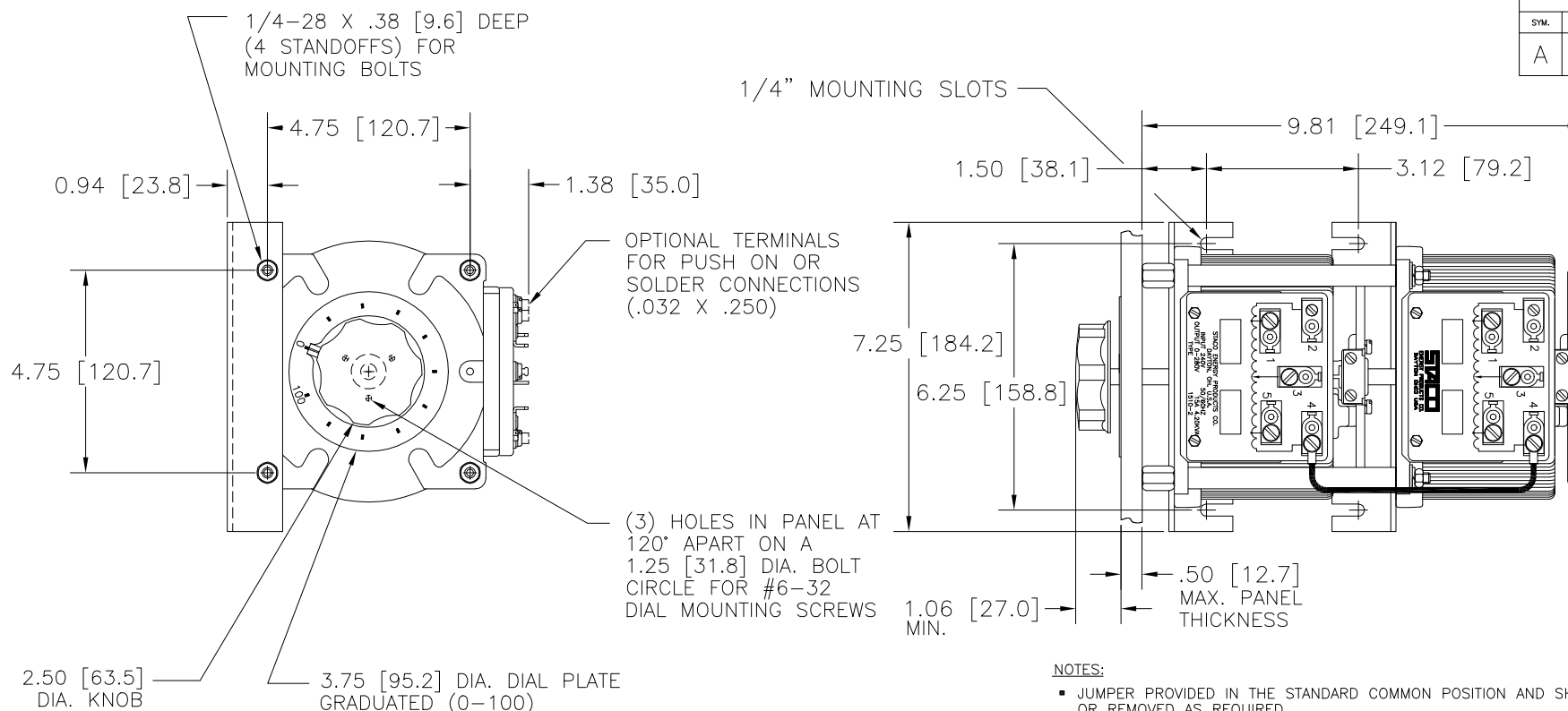
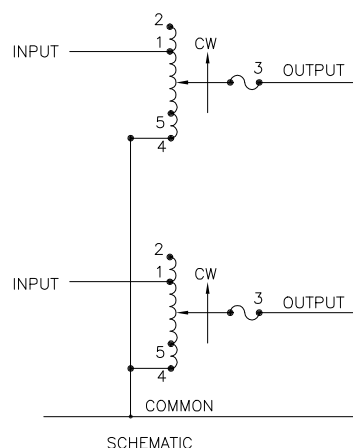


DWG. NO.	031-3613		
REV. NO.	1		
SYN.	E.C.N.	DATE	APVD.
A	23231	9/23/96	REVISED & UPDATED



NOTES:

- JUMPER PROVIDED IN THE STANDARD COMMON POSITION AND SHOULD BE MOVED OR REMOVED AS REQUIRED.
- IF GANGED UNITS ARE USED IN A SYSTEM THAT ORDINARILY HAS A COMMON NEUTRAL OR GROUND BETWEEN SOURCE AND LOAD, THE NEUTRAL OR GROUND MUST BE CONNECTED TO THE COMMON TERMINALS OF THE VARIABLE TRANSFORMER ASSEMBLY. IF THE SYSTEM HAS NO NEUTRAL, THE LOAD MUST BE BALANCED OR THE TRANSFORMERS WILL BE DAMAGED.



NOTE:
FUSE RECOMMENDED BUT NOT SUPPLIED

SPECIFICATIONS											
WIRING	INPUT		OUTPUT				SHAFT ROTATION TO INCREASE VOLTAGE	TERMINAL CONNECTIONS			
	VOLTS	HERTZ	VOLTS	CONSTANT CURRENT LOAD		CONSTANT IMPEDANCE LOAD		FOR INCREASING VOLTAGE AS VIEWED FROM BASE END			
				MAX. AMPS	MAX. KVA	MAX. AMPS		MAX. KVA	INPUT	JUMPER	OUTPUT
SINGLE PHASE SERIES	240	50/60	0-240	15	3.60	20	4.80	CW	2-2	4-4	3-3
							CCW	4-4	2-2	3-3	
			0-280	15	4.20	—	—	CW	1-1	4-4	3-3
							CCW	5-5	2-2	3-3	
THREE PHASE OPEN DELTA	120	50/60	0-120	15	3.12	20	4.15	CW	2-4-2	4-4	3-4-3
							CCW	4-2-4	2-2	3-2-3	
			0-140	15	3.64	—	—	CW	1-4-1	4-4	3-4-3
							CCW	5-2-5	2-2	3-2-3	

TOLERANCE IS ± ANGLES DRAFT 1-1/2°

UNITS IN [mm]

ALL DIMENSIONS APPLY AFTER PLATING

TITLE: SPEC. CONTROL DWG. VARIABLE TRANSFORMER TYPE: 1510-2

STACO

ENERGY PRODUCTS CO.

DAYTON, OHIO U.S.A.

DRAWN BY TIM RAU

CHECKER

ENGINEER

DATE 2/7/96

DATE

DATE

FIRST USED ON

WEIGHT APPROX.

SCALE 5=1

DO NOT SCALE DWG.

CODE IDENT. NO. 83608


SHEET 1 OF 1

CUSTOMER APPROVAL

DATE

C 031-3613

Design disclosed herein was originated by CO ENERGY PRODUCTS CO., which reserves design, manufacturing, reproduction, use and to any article disclosed therein rights are expressly granted to others. It apply to vendor proprietary parts.

UNLESS OTHERWISE SPECIFIED, TOLERANCE IS ±			TITLE:			 ENERGY PRODUCTS CO. DAYTON, OHIO U.S.A.					
DECIMALS .XX ±.06 .XXX .005	HOLES 1°	ANGLES 1-1/2°	UNITS IN [mm]								
MATERIAL:			ALL DIMENSIONS APPLY AFTER PLATING			SPEC. CONTROL DWG. VARIABLE TRANSFORMER TYPE: 1510-2					
<p>The information and design disclosed herein was originated by and is the property of STACO ENERGY PRODUCTS CO., which reserves all patent, proprietary, design, manufacturing, reproduction, use and sale rights thereto, and to any article disclosed therein except to the extent rights are expressly granted to others. The foregoing does not apply to vendor proprietary parts.</p>						DRAWN BY TIM RAU	DATE 2/7/96	FIRST USED ON	DO NOT SCALE DWG.	CUSTOMER APPROVAL	DATE
						CHECKER	DATE	WEIGHT APPROX.	CODE IDENT. NO. 83008	DWG. NO.	
						ENGINEER	DATE	SCALE .5=1	SHEET 1 of 1		

Mouser Electronics

Authorized Distributor

Click to View Pricing, Inventory, Delivery & Lifecycle Information:

[Staco:](#)

[1510-2](#)