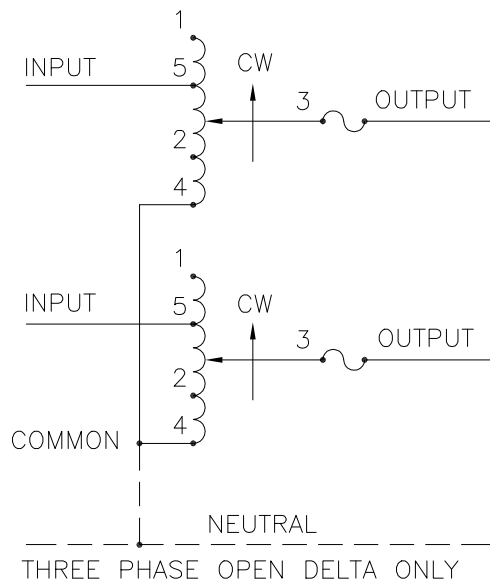
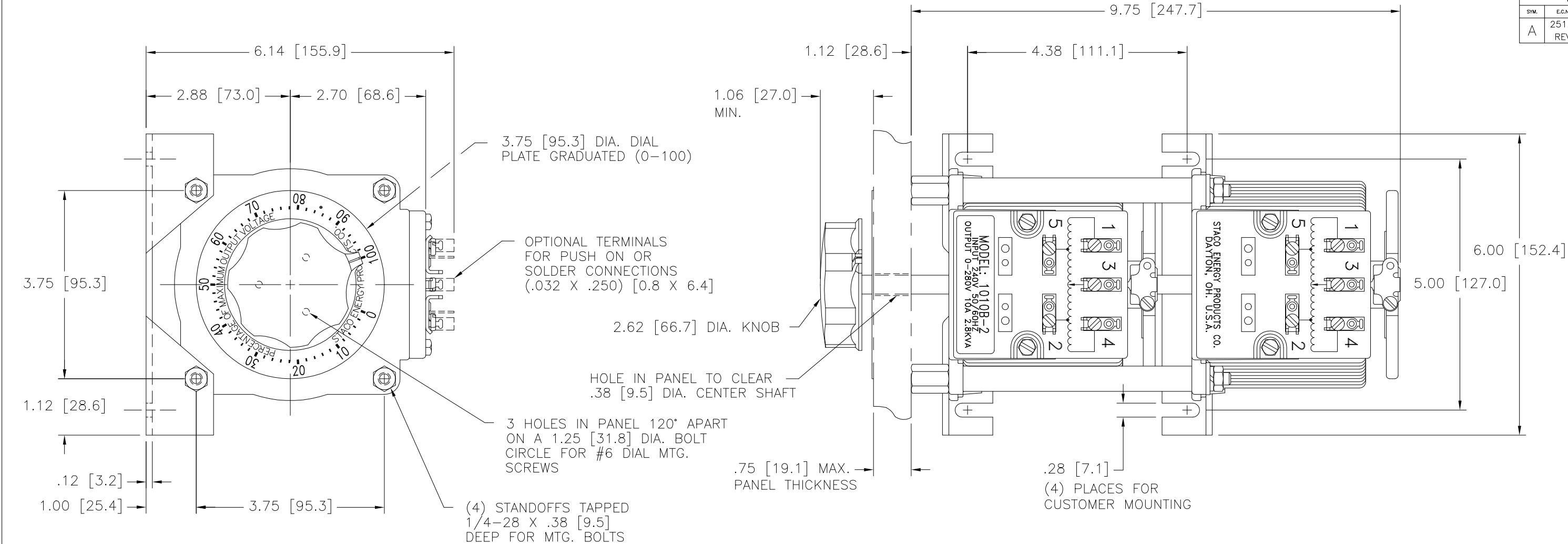



DWG. SIZE D	DWG. NO. 031-1620		
REVISIONS			
SYM.	E.C.N.	DATE	APVD.
A	25121	5/12/03	
REVISED DIAL PLATE			



SCHEMATIC  
THREE PHASE OPEN DELTA AND SINGLE  
PHASE SERIES. FUSE RECOMMENDED BUT  
NOT SUPPLIED.

- ⋈ IF GANGED UNITS ARE USED IN A SYSTEM THAT ORDINARILY HAS A COMMON NEUTRAL OR GROUND BETWEEN SOURCE AND LOAD, THE NEUTRAL OR GROUND MUST BE CONNECTED TO THE COMMON TERMINALS OF THE VARIABLE TRANSFORMER ASSEMBLY. IF THE SYSTEM HAS NO NEUTRAL, THE LOAD MUST BE BALANCED OR THE TRANSFORMER WILL BE DAMAGED.
- JUMPER PROVIDED IN STANDARD COMMON POSITION AND SHOULD BE MOVED OR REMOVED AS REQUIRED.
- ++ LINE TO LINE VOLTAGE.

SPECIFICATIONS														
WIRING	INPUT		VOLTS	OUTPUT				SHAFT ROTATION TO INCREASE VOLTAGE	TERMINAL CONNECTIONS					
	VOLTS	HERTZ		CONSTANT CURRENT LOAD	CONSTANT IMPEDANCE LOAD	FOR INCREASING VOLTAGE AS VIEWED FROM BASE END ■								
						MAX. AMPS	MAX. KVA		MAX. AMPS	MAX. KVA	INPUT	JUMPER	OUTPUT	
SINGLE PHASE SERIES	240	50/60	0-240	10	2.4	13	3.12	CW	1-1	4-4	3-3			
							CCW	4-4	1-1	3-3				
			0-280	10	2.8	—	—	CW	5-5	4-4	3-3			
							CCW	2-2	1-1	3-3				
THREE PHASE OPEN DELTA π	120 ++	50/60	0-120	10	2.08	13	2.70	CW	1-4-1	4-4	3-4-3			
							CCW	4-1-4	1-1	3-1-3				
			0-140	10	2.42	—	—	CW	5-4-5	4-4	3-4-3			
							CCW	2-1-2	1-1	3-1-3				
UNLESS OTHERWISE SPECIFIED, TOLERANCE IS ± DECIMALS XX .0005 XX .0005			ANGLES 1° 1-1/2°		DRAFT 1-1/2°		TITLE: SPEC. CONTROL DRAWING VARIABLE TRANSFORMER MODEL: 1010B-2							
MATERIAL :			ALL DIMENSIONS APPLY AFTER PLATING		 A Components Corporation of Arneson Company 301 Gadisa Boulevard Dayton, Ohio 45403 USA									
The information and design disclosed herein was originated by and is the property of STACO ENERGY PRODUCTS CO., which reserves all patent, proprietary, design, manufacturing, reproduction, use and sale rights thereto, and to any article disclosed therein except to the extent rights are expressly granted to others. The foregoing does not apply to vendor proprietary parts.					DRAWN BY S.A. SMITH		DATE 9/16/97		FIRST USED ON		DO NOT SCALE DWG.			
					CHECKER		DATE		WEIGHT APPROX. 19 LBS		CAGE CODE 83008		DWG. SIZE	
					ENGINEER		DATE		SCALE 1=1		SHEET 1 OF 1		D 031-1620	

# Mouser Electronics

Authorized Distributor

Click to View Pricing, Inventory, Delivery & Lifecycle Information:

Staco:

1010B-2