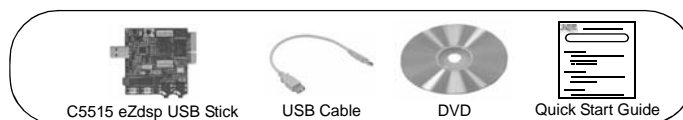




TMS320C5515 eZdsp Stick Quick Start Guide



1.0 SYSTEM REQUIREMENTS

To operate the Spectrum Digital XDS100 JTAG Emulator with your system it needs to meet the following requirements:

- 2 GB of free hard disk space
- Microsoft Windows™ XP/Vista
- Min 1 GB ram, 2 GB recommended
- Min 1.5 GHz., dual core recommended
- Color Display
- Internet access
- USB port
- DVD reader

2.0 WHAT'S INCLUDED

The TMS320C5515 eZdsp USB Stick kit includes:

- TMS320C5515 eZdsp USB Stick
- USB extension cable
- TMS320C5515 eZdsp USB Stick DVD with Code Composer Studio (CCS)
- This Quick Start Guide

3.0 C5515 eZdsp USB Stick Installation

Note: *Install **ALL** software prior to connecting the C5515 eZdsp USB Stick to the computer !*

Note: *The user **MUST** be logged onto windows with "Administrative Rights" and any anti-virus software must be disabled during installations. Please contact your system administrator if help is needed in this area.*

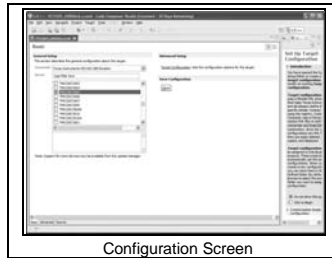
1. Insert the Code Composer Studio (CCS) v4 DVD into the computer's DVD drive and wait for the auto-run application to start. The user prompts will step the user through the rest of the CCS installation. The installation will place a CCS icon on your desktop.
2. At this time plug the C5515 eZdsp USB Stick into a USB port (directly or via the USB extension cable) on your laptop or PC. Windows will recognize the new hardware connection and complete the hardware installation automatically.
3. Launch CCS v4 from the shortcut icon on the desktop.
4. A prompt will appear asking for a workspace location. Each time CCS starts up the main workspace is the main working folder for CCS. The default location will be (on Windows XP) "C:\Documents and Settings\<user name>\My Documents\workspace". To have CCS automatically default to the specified workspace location, select the "Use this as the default and do not ask again" option.
5. Create a user license. After launching CCS, the user may be prompted to create a user license to activate the CCS software. Select the "Activate a License" option. Then click "Use Free Limited License". This will re-direct you to the Texas Instruments website to complete the License creation process. Alternatively, the "Activate a License" step may be bypassed temporarily and completed at a later date by clicking "Evaluate Code Composer Studio for 30 days".



License Screen

4.0 CCS Configuration Instructions

1. Launch CCS v4 from the shortcut on the desktop. (This was created when CCS v4 was installed).
2. The CCS v4 window will appear. Click the "Target" menu, then select "New Target Configuration File".
3. The "New Target Configuration" window will appear. Enter a file name that describes the emulator connection and/or Texas Instruments device being used and click "Finish". For example: "C5515_USBStick".
4. The "Basic" configuration setup window will open in the CCS v4. Select "Texas Instruments XDS100 USB Emulator" from the "Connection" menu. Type "5515" in the "Device" field and select "USBSTK5515", from the list.



Configuration Screen

5. Click the "Save" button to save the configuration.
6. Click the "View" menu and select "Target Configurations" to expose the configuration(s) that have been built or imported. A new tab labeled "Target Configurations" will become available in the CCS window.
7. Expand the "User Defined" folder. Right-click on the new configuration that has been created and click "Launch Selected Configuration".
8. Click "View->Debug" then click "Target->Connect Target". CCS will attempt to connect to the C5515 eZdsp USB Stick and run the GEL file. Once the connection is successful and the GEL file has finished, the console window will print a message stating "Target Connection Complete".

5.0 Running the C5515 eZdsp USB Stick LED Blink Demonstration

1. The C5515 eZdsp USB Stick must be connected in CCS before proceeding. If the board is not connected, please refer to section 4.0 of this guide.
2. Click "File->Import".
3. When the new window appears, expand "CCS" and select "Existing CCS/CCE Eclipse Project". Click "Next".
4. Select "Select Root Directory" and click the "Browse" button. Browse to directory path "<Install_Dir>\ccsv4\emulation\boards\usbstk5515_v1\tests\led".
The default <Install_Dir> is "C:\programfiles\Texas Instruments"
5. Highlight the "LED" folder and click "OK". Then click "finish"
6. Click "View->C/C++Projects". A new tab will appear in the CCS v4 window and there should be a LED project visible.
7. Click "Project->Build Active Project".
8. When the build is complete, a message will print in the Console Window.
9. Look in the "C\C++Projects" tab again and expand the "binaries" folder. There now should be a "led.out" file listed.
10. Right click on "led.out" and click "Load Program".
11. Click "Target->Run". The C5515 eZdsp USB Stick "XF" LED should now blink.

6.0 SUPPORT RESOURCES

1. For additional information regarding the TMS320C5515 family of DSPs please refer to the following page on the TI web site:
<http://tiexpressdsp.com/index.php/C5000>
2. If you have problems or need additional information regarding the embedded emulation please refer to the XDS100 USB wiki on the TI web site. The URL for this site is:
<http://tiexpressdsp.com/index.php?title=XDS100>
3. Code Composer Studio support is available via a forum at:
<http://community.ti.com/forums/138.aspx>
4. More information about other Spectrum Digital emulators can be found at:
www.spectrumdigital.com
5. Additional development support is available via the online community:
www.ti.com/eZdsp5000

EVALUATION BOARD/KIT IMPORTANT NOTICE

Spectrum Digital, Inc. (SDI) provides the enclosed product(s) under the following conditions:

This evaluation board/kit is intended for use for **ENGINEERING DEVELOPMENT, DEMONSTRATION, OR EVALUATION PURPOSES ONLY** and is not considered by SDI to be a finished end-product fit for general consumer use. Persons handling the product(s) must have electronics training and observe good engineering practice standards. As such, the goods being provided are not intended to be complete in terms of required design-, marketing-, and/or manufacturing-related protective considerations, including product safety and environmental measures typically found in end products that incorporate such semiconductor components or circuit boards. This evaluation board/kit does not fall within the scope of the European Union directives regarding electromagnetic compatibility, restricted substances (RoHS), recycling (WEEE), FCC, CE or UL, and therefore may not meet the technical requirements of these directives or other related directives.

Should this evaluation board/kit not meet the specifications indicated in the User's Guide, the board/kit may be returned within 30 days from the date of delivery for a full refund. THE FOREGOING WARRANTY IS THE EXCLUSIVE WARRANTY MADE BY SELLER TO BUYER AND IS IN LIEU OF ALL OTHER WARRANTIES, EXPRESSED, IMPLIED, OR STATUTORY, INCLUDING ANY WARRANTY OF MERCHANTABILITY OR FITNESS FOR ANY PARTICULAR PURPOSE.

The user assumes all responsibility and liability for proper and safe handling of the goods. Further, the user indemnifies SDI from all claims arising from the handling or use of the goods. Due to the open construction of the product, it is the user's responsibility to take any and all appropriate precautions with regard to electrostatic discharge.

EXCEPT TO THE EXTENT OF THE INDEMNITY SET FORTH ABOVE, NEITHER PARTY SHALL BE LIABLE TO THE OTHER FOR ANY INDIRECT, SPECIAL, INCIDENTAL, OR CONSEQUENTIAL DAMAGES.

SDI currently deals with a variety of customers for products, and therefore our arrangement with the user **is not exclusive**.

SDI assumes **no liability for applications assistance, customer product design, software performance, or infringement of patents or services described herein.**

Please read the User's Guide and, specifically, the Warnings and Restrictions notice in the User's Guide prior to handling the product. This notice contains important safety information about temperatures and voltages. For additional information on SDI's environmental and/or safety programs, please contact the SDI application engineer or visit www.spectrumdigital.com.

No license is granted under any patent right or other intellectual property right of SDI covering or relating to any machine, process, or combination in which such SDI products or services might be or are used.

Mailing Address: Spectrum Digital, Inc.
 P.O. Box 1559
 Sugar Land, TX. 77487-1559

"eZdsp" is a trademark of Spectrum Digital, Inc.

FCC Warning

This evaluation board/kit is intended for use for **ENGINEERING DEVELOPMENT, DEMONSTRATION, OR EVALUATION PURPOSES ONLY** and is not considered by SDI to be a finished end-product fit for general consumer use. It generates, uses, and can radiate radio frequency energy and has not been tested for compliance with the limits of computing devices pursuant to part 15 of FCC rules, which are designed to provide reasonable protection against radio frequency interference. Operation of this equipment in other environments may cause interference with radio communications, in which case the user at his own expense will be required to take whatever measures may be required to correct this interference.

SPECTRUM DIGITAL, INC
12502 Exchange Dr., Suite 440, Stafford, TX. 77477
T: 281.494.4505 F: 281.494.5310
e-mail: sales@spectrumdigital.com **website:** www.spectrumdigital.com
© Copyright 2010 Spectrum Digital, Inc.
512846-0001 Rev A

Mouser Electronics

Authorized Distributor

Click to View Pricing, Inventory, Delivery & Lifecycle Information:

[Spectrum Digital:](#)

[702359](#)