

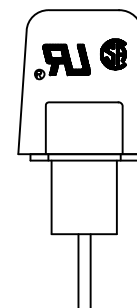
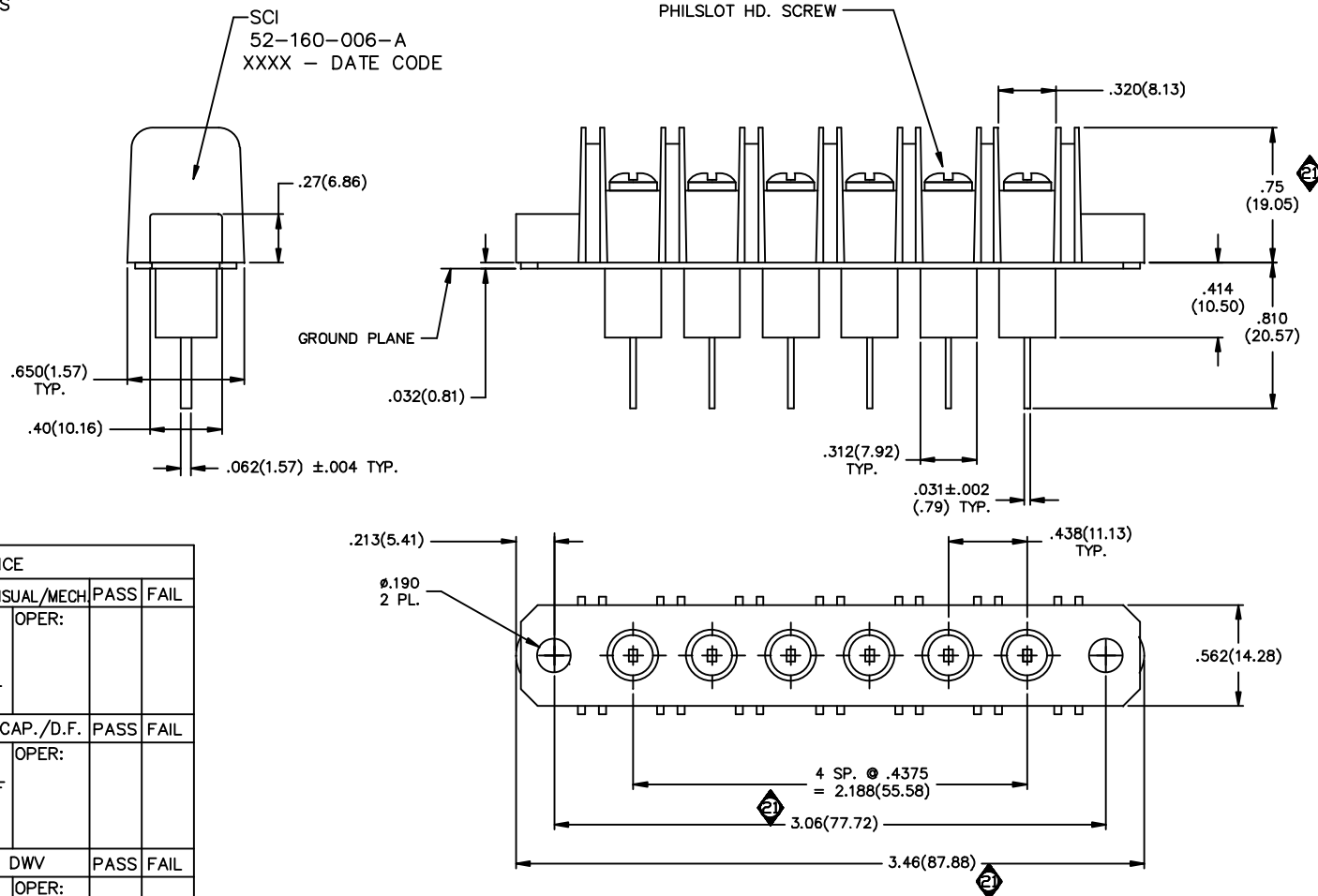


- MOUNTING HOLES
AS REQUIRED

MARKING:

—SCI
52-160-006-A
XXXX - DATE CODE

#6-32UNC-2A THD
PHILSLOT HD. SCREW



NOTES:

- 1) VOLTAGE: 100 VDC.
- 2) CURRENT: 20 AMPS.
- 3) OPERATING TEMPERATURE: -55°C TO +105°C.
- 4) MATERIAL: BLACK THERMOPLASTIC OR EQUIV.
- 5) SCREW TYPE: #6-32 PHILSLOT HD.
- 6) MARKING: 4 PT. CHARACTERS, WHITE INK.
- 7) CAPACITANCE: 2500pF MIN./ 5200pF MAX.
- 8) GROUND PLANE IS TO BE FLAT WITHIN .012".
- 9) SHIPPING TRAY LABEL MARKING:

SCI 52-160-006-A DATE CODE
100V, 20A, 12-22AWG
UL & CSA LOGOS

TEST SEQUENCE				
STEP 0400	94-4033-00	VISUAL/MECH.	PASS	FAIL
PER IT 38-0468 INSPECT DIMENSIONS AND WORKMANSHIP. PER MIL-STD-105, LEVEL II, 1% AQL COMMENTS: 100%		OPER:		
STEP 0100	94-1002-00	CAP./D.F.	PASS	FAIL
PER IT 38-0245 CAP: 2500pF TO 5200pF DF. ≤4% MAX COMMENTS: 100%		OPER:		
STEP 0200	94-2005-00	DWV	PASS	FAIL
PER IT 38-0245 DWV: 2000 VDC 25°C 1 MINUTE MINIMUM COMMENTS: 100%		OPER:		
STEP 0300	94-2015-00	I.R.	PASS	FAIL
PER IT 38-0245 IR: 100VDC, 1000 Mohms MIN. 2 MINUTES MAX. COMMENTS: 100%		OPER:		

[illegible]

Quality Products From The Specialists In Electro-Magnetic Compatibility

Mouser Electronics

Authorized Distributor

Click to View Pricing, Inventory, Delivery & Lifecycle Information:

[Spectrum Control:](#)

[52-160-006-A](#)