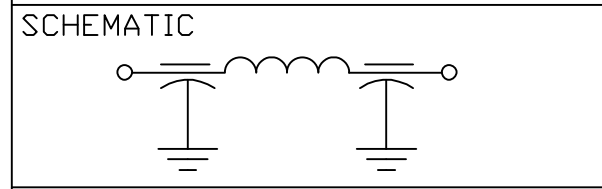


- NOTES:
- 1) LEADS MUST BE STRAIGHT.
 - 2) HARDWARE IS INCLUDED.

CAPACITANCE	7500pF ±15%
TEMP. RANGE	-55°C TO +125°C
CURRENT	10 AMP MAX.
WORKING VOLTAGE	85°C 100 VDC 125°C 100 VDC
DCR. = .01 ohms MAX.	
IL=PER MIL-STD-220, @25°C N/L	
FREQ. MHz	I.L. (db)
1	--
5	--
10	5
20	--
50	--
100	45
1 TO 10GHz	70



06

MARKING:

PART: SCI 1297-010

BLISTER PACK: SEE NOTE 1

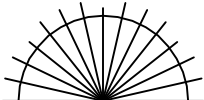
SCI 1297-010

DATE CODE

LOT NO.

QTY.

044654

		6	5	4	3	2	1	0	REV. NO.	TOLERANCES UNLESS OTHERWISE SPECIFIED	 SPECTRUM CONTROL INC.	ERIE, FAIRVIEW PENNSYLVANIA	
		CN 10646-CPD	CN 212504	CN 172413	CN 171365	CN 166199	CN 164363 REDRAWN	CN 149052	CHANGE NOTICE	Fractions $\pm 1/64$		Dwn. KAUFFMAN	Description
										Dec. .xx \pm	Date 4-6-04	Pi, RESIN SEAL FILTER	
										Dec. .xxx \pm .015	Engr. K. Wood	1297-010	
										Angles $\pm 0^{\circ} 30'$	Scale NONE		
										CODE IDENT. NO. DLSP2			

Mouser Electronics

Authorized Distributor

Click to View Pricing, Inventory, Delivery & Lifecycle Information:

[Spectrum Control:](#)

[1297-010](#)