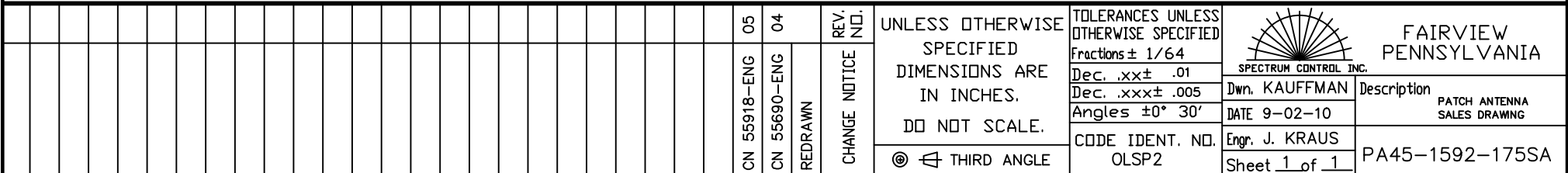


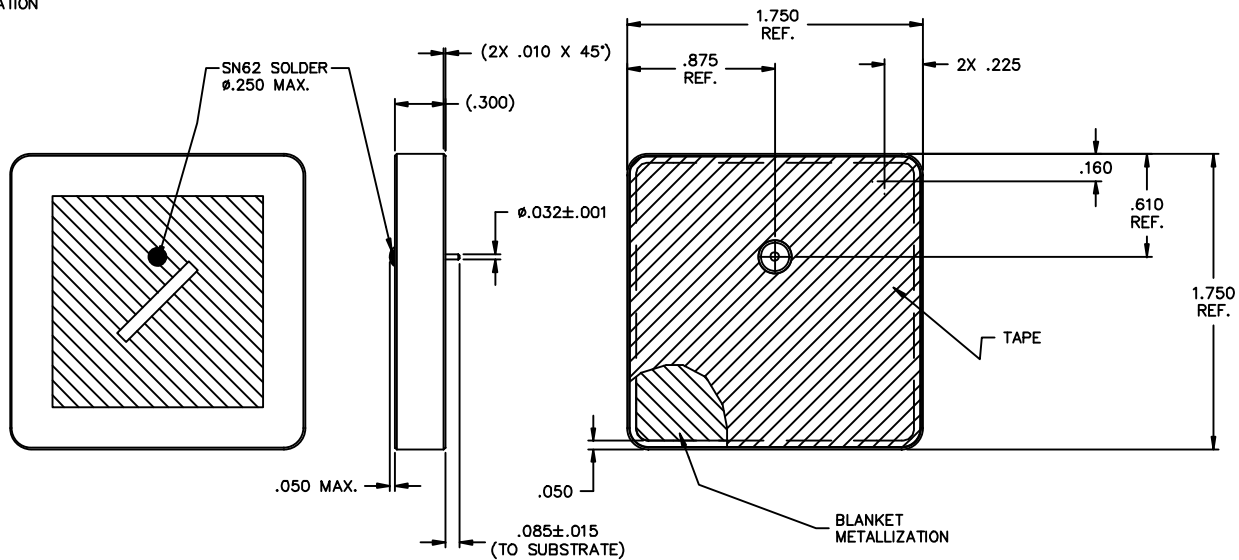
1. ELECTRICAL SPECIFICATIONS:
 CENTER FREQUENCY: 1592 MHz
 FREQUENCY TOLERANCE: ± 10 MHz
 3:1 VSWR B.W. = 175 MHz
 MIN GAIN @ C.F. = 4 dBic
 HALF POWER BEAMWIDTH:
 110° SOLID ANGLE
 EFFICIENCY: 60% TYPICAL
 VSWR @ C.F. = $\leq 1.8:1$
 AXIAL RATIO: 6 dB
 RIGHT HAND CIRCULAR POLARIZATION
 Z_{IN} = 50 OHMS

2. SPECIFICATIONS ARE FOR UNPACKAGED ANTENNA.
3. FOOTPRINT AND ELECTRICAL SPECIFICATIONS ARE SUBJECT TO CHANGE. CONSULT SPECTRUM CONTROL FOR SPECIFIC APPLICATIONS.
4. TESTING TO BE PERFORMED ON AN ALUMINUM GROUND PLANE, 63mm (2.480 IN) X 63mm (2.480 IN) SQUARE, IN FREE SPACE.



NOTES:

1. ELECTRICAL SPECIFICATIONS:
 CENTER FREQUENCY: 1592 MHz
 FREQUENCY TOLERANCE: ± 10 MHz
 3:1 VSWR B.W. = 175 MHz
 MIN GAIN @ C.F. = 4 dBic
 HALF POWER BEAMWIDTH:
 110° SOLID ANGLE
 EFFICIENCY: 60% TYPICAL
 VSWR @ C.F. = $\leq 1.8:1$
 AXIAL RATIO: 6 dB
 RIGHT HAND CIRCULAR POLARIZATION
 Z_{IN} = 50 OHMS
2. SPECIFICATIONS ARE FOR UNPACKAGED ANTENNA.
3. FOOTPRINT AND ELECTRICAL SPECIFICATIONS ARE SUBJECT TO CHANGE. CONSULT SPECTRUM CONTROL FOR SPECIFIC APPLICATIONS.
4. TESTING TO BE PERFORMED ON AN ALUMINUM GROUND PLANE, 63mm (2.480 IN) X 63mm (2.480 IN) SQUARE, IN FREE SPACE.

[illegible]

Quality Products From The Specialists In Electro-Magnetic Compatibility

Mouser Electronics

Authorized Distributor

Click to View Pricing, Inventory, Delivery & Lifecycle Information:

[API Technologies:](#)

[PA45-1592-175SA](#)