

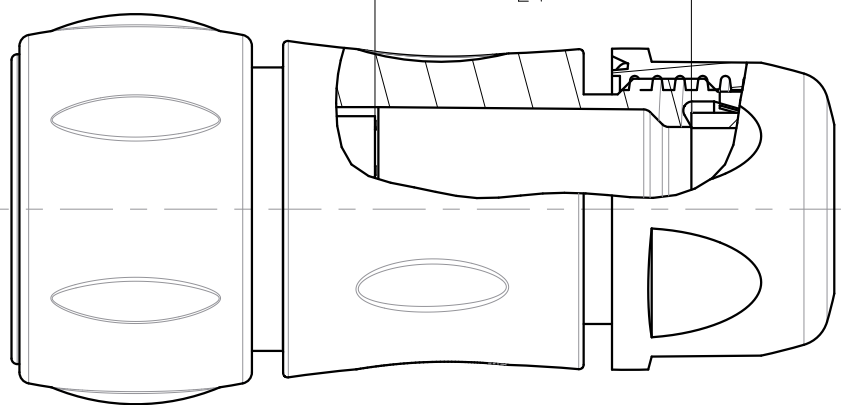
SIDE VIEW FOR EACH VERSION

UTGX6JC-----

UTGX6JC--E----

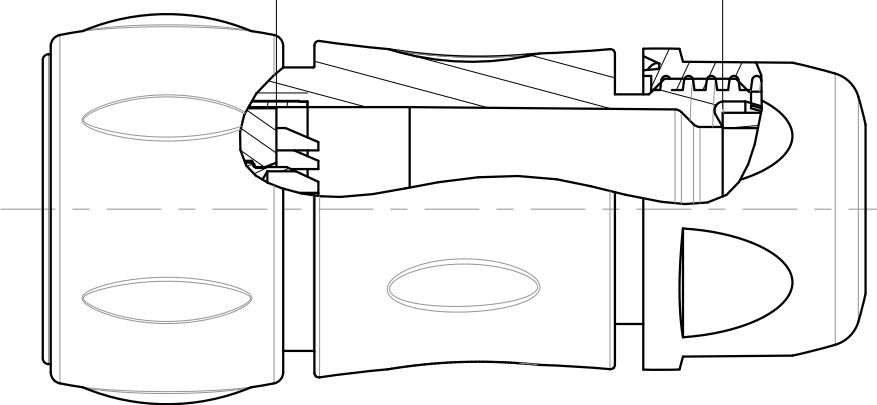
WIRING AREA (between insert and backshell seal)

E1



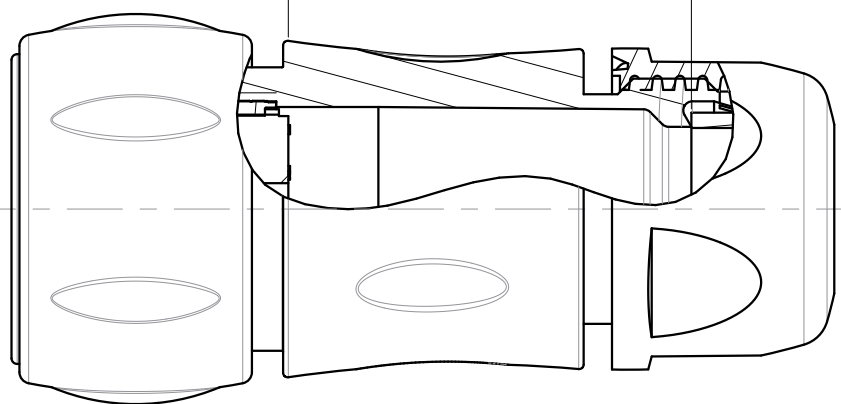
WIRING AREA (between insert and backshell seal)

E2



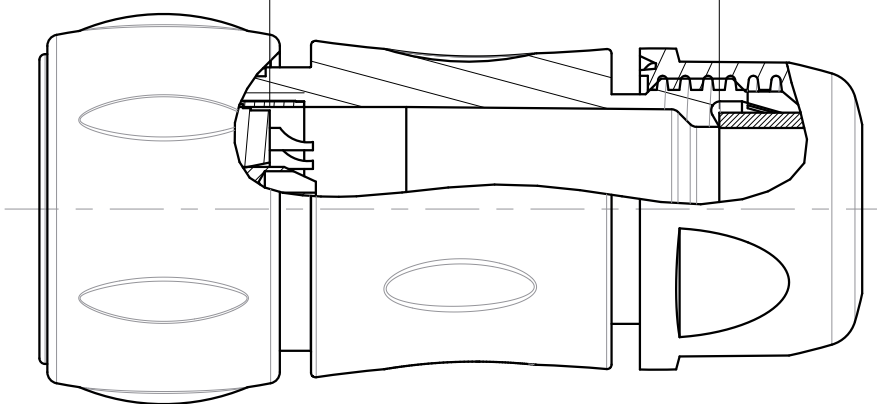
WIRING AREA (between insert and backshell seal)

E3



WIRING AREA (between insert and backshell seal)

E4



SEALING
CONDITIONS

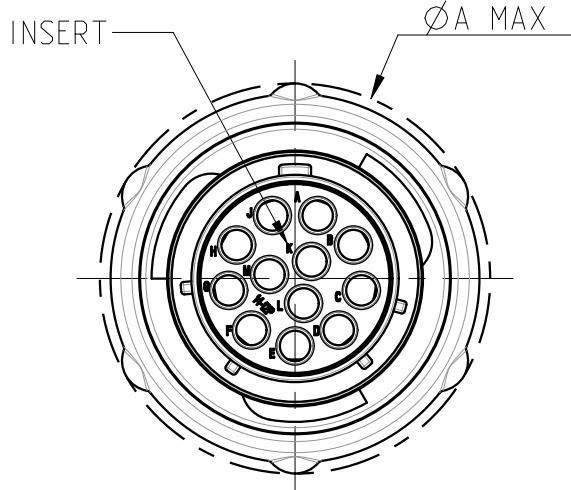
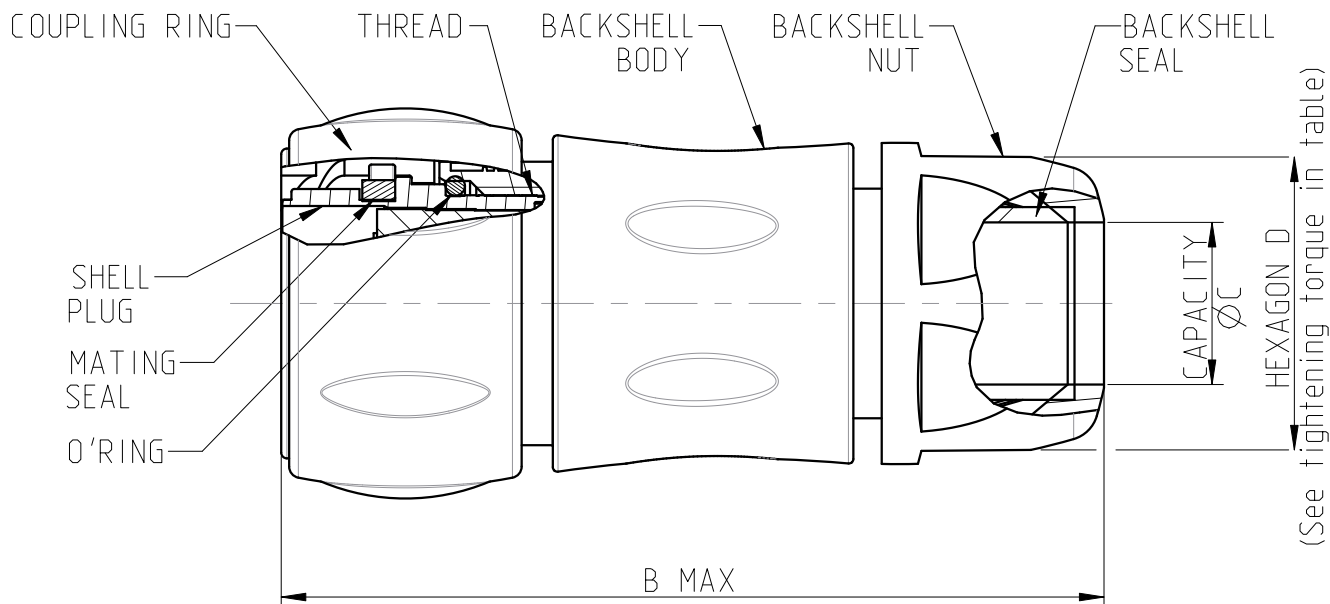
Sealing in MATED conditions with COUNTERPART:

- IP68 1 bar during 1 week: immersion under 10 m of water. (IEC 60529)
- IP69K : exposure to high pressure water of cleaning equipment (DIN 40050)

Sealing in MATED conditions with COUNTERPART and UNMATED conditions:

- IP68 1 bar during 1 week: immersion under 10 m of water. (IEC 60529)
- IP69K : exposure to high pressure water of cleaning equipment (DIN 40050)

COMMON QUOTES FOR ALL VERSION



MATERIAL :

- SHELL :PA UL94 V0, UL746C F1 Black color
- COUPLING RING: PA + Nickel-plated brass
- BACKSHELLS : PA UL94 V0 F1 Black color
- BACKSHELL Seal : CR
- INSERT (UTGX0-----) : PA UL94 V0, UL746C F1
- INSERT (UTGX0--E----) : Polychloroprene
- O'RING : NITRIL
- MATING SEAL : SILICON
- CONTACTS: brass + coated depending on P/N

PERFORMANCE CHARACTERISTICS :

Operating temperature: -40°C up to 105°C
Insulation resistance: 5000 MΩmin
Corrosion salt spray: 500 hours
Durability: 500 matings and unmatings
Sealing conditions: SEE TABLE

NOTA:

- 1- Contact to be ordered separately for version UTGX6----- : refer to corresponding catalogue.
- 2- Insert arrangement refer to:
 - UTO-CONTACT-L-C02 (Female insulator)
 - UTO-DHP-003-C01 (Female insulator #20)
 - UTO-DHP-002-C01 (Female insulator #16)
 - UTO-CONTACT-L-C01 (Male insulator)
 - UTO-DHP-003-C01 (Male insulator #20)
 - UTO-DHP-001-C01 (Male insulator #16)
 - C144-UTS1-A (HiSeal Version)
- 3- This part shall be used at the place of the standard seal to accomodate with different cable Ø
- 4- Plug, backshell and the reducing seal are delivered as a kit. The backshell already includes the standard seal.

Country	Jurisdiction & Control List
FR	NOT LISTED

SOURIAU shall not be liable for any non-conformity or damage due to a use of the Products which does not comply with the Specifications issued by either of the Parties or by a third party (professional recommendation, technical notice.)

P/N : CROSS REF TABLE

BASIC SERIES	UTGX	6	JC	14	E	19	P	* P/N for example
SHELL TYPE	6	Plug						Normal (no digit) W.X.Y.Z
BACKSHELL	JC							TYPE OF CONTACTS P: MALE S: FEMALE
SHELL SIZE	10 12 14							INSERT ARRANGEMENT See NOTA 2
TYPE OF LAYOUT	Standard layout (No digit) E : HI SEAL Handsolder contacts							

SHELL SIZE	MAX	MAX	STANDARD	REDUCING SEAL (NOTA.3)	HEXAGON backshell nut		MAX				THREAD CLASS 2A	±10% (g.)
	ØA	B	ØC		D	Tightening torque (N.m)	E1	E2	E3	E4		MASS
10	26.2	66	2.5 / 8	1.5 / 5	18.5	1	21	34.1	29	33.5	9/16-24 UNEF	30
12	29.7	69	5 / 12	3 / 9	24	2	25	38.1	33	37.5	11/16-24 UNEF	40
14	34.6	75.5	7 / 14	5 / 12	26	2.5	29	42.1	36	40.5	13/16-20 UNEF	53

B	14/02/2020	-Update drawing --	25253J
ISS	DATE	Latest modification - by: J.FEURPRIER	MOD N°
Designed by: PE.LANDAIS		Date:10/05/19	CUSTOMER DRAWING
TITLE		PLUG T6 WITH BACKSHELL JC - SIZE 10 12 & 14, Standard and Hiseal version UTGX CONNECTOR	
Scale 3/2		Dimensions in mm General Linear Tolerances: ± 0.2	NPRDS / PROJECT GBB
		www.souriau.com	This document is the property of SOURIAU It must not be reproduced or communicated without permission
FORMAT A2	SOURIAU DRG N° UTGX-0005A-C		SHEET 1 / 1

Mouser Electronics

Authorized Distributor

Click to View Pricing, Inventory, Delivery & Lifecycle Information:

Souriau:

[UTGX6JC102W2S](#) [UTGX6JC103P](#) [UTGX6JC103W3P](#) [UTGX6JC103W3S](#) [UTGX6JC14E7P](#) [UTGX6JC14E15P](#)
[UTGX6JC14E15S](#) [UTGX6JC14E18P](#) [UTGX6JC14E18S](#) [UTGX6JC14E19P](#) [UTGX6JC148P](#) [UTGX6JC148S](#)
[UTGX6JC1492P](#) [UTGX6JC1492S](#) [UTGX6JC1419P](#) [UTGX6JC142G1P](#) [UTGX6JC147P](#) [UTGX6JC12E4P](#)
[UTGX6JC12E14P](#) [UTGX6JC12E14S](#) [UTGX6JC12E2P](#) [UTGX6JC12E2S](#) [UTGX6JC12E3P](#) [UTGX6JC12E3S](#)
[UTGX6JC124P](#) [UTGX6JC128P](#) [UTGX6JC12E10P](#) [UTGX6JC12E10S](#) [UTGX6JC10E7S](#) [UTGX6JC10E98P](#)
[UTGX6JC10E98S](#) [UTGX6JC1210P](#) [UTGX6JC104P](#) [UTGX6JC106P](#) [UTGX6JC10E6P](#) [UTGX6JC104PW](#)
[UTGX6JC104SW](#) [UTGX6JC106PW](#) [UTGX6JC106SW](#) [UTGX6JC10E6PW](#) [UTGX6JC10E6SW](#) [UTGX6JC10E7PW](#)
[UTGX6JC10E7SW](#) [UTGX6JC10E98PW](#) [UTGX6JC10E98PX](#) [UTGX6JC10E98PY](#) [UTGX6JC10E98PZ](#)
[UTGX6JC10E98SW](#) [UTGX6JC10E98SX](#) [UTGX6JC10E98SY](#) [UTGX6JC10E98SZ](#) [UTGX6JC1210PW](#)
[UTGX6JC1210PX](#) [UTGX6JC1210PY](#) [UTGX6JC1210PZ](#) [UTGX6JC1210SW](#) [UTGX6JC1210SX](#) [UTGX6JC1210SY](#)
[UTGX6JC1210SZ](#) [UTGX6JC128PW](#) [UTGX6JC128SW](#) [UTGX6JC12E10PW](#) [UTGX6JC12E10PX](#) [UTGX6JC12E10PY](#)
[UTGX6JC12E10PZ](#) [UTGX6JC12E10SW](#) [UTGX6JC12E10SX](#) [UTGX6JC12E10SY](#) [UTGX6JC12E10SZ](#)
[UTGX6JC12E14PW](#) [UTGX6JC12E14SW](#) [UTGX6JC12E3PY](#) [UTGX6JC12E3SY](#) [UTGX6JC12E8PW](#)
[UTGX6JC12E8PX](#) [UTGX6JC12E8PY](#) [UTGX6JC12E8PZ](#) [UTGX6JC12E8SW](#) [UTGX6JC12E8SX](#) [UTGX6JC12E8SY](#)
[UTGX6JC12E8SZ](#) [UTGX6JC1412PW](#) [UTGX6JC1412SW](#) [UTGX6JC1419PW](#) [UTGX6JC1419PX](#) [UTGX6JC1419PY](#)
[UTGX6JC1419SW](#) [UTGX6JC1419SX](#) [UTGX6JC1419SY](#) [UTGX6JC1492PW](#) [UTGX6JC1492PX](#) [UTGX6JC1492PY](#)
[UTGX6JC1492SW](#) [UTGX6JC1492SX](#) [UTGX6JC1492SY](#) [UTGX6JC14E12PW](#) [UTGX6JC14E12PX](#)
[UTGX6JC14E12SW](#) [UTGX6JC14E12SX](#) [UTGX6JC14E15PW](#)